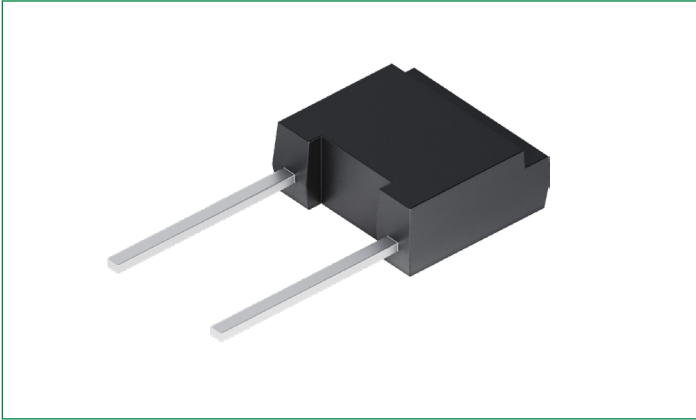


DSA1

Avalanche Diode

IEC60747



Preliminary Data

Type	V_{RSM} (V)	$V_{(BR)min}$ (V)	V_{RRM} (V)
DSA1-12D	1300	1300	1200
DSA1-16D	1700	1750	1600
DSA1-18D	1900	1950	1800

Features:

- Plastic standard package
- Planar passivated chips

Advantages:

- Space and weight savings
- Simple PCB mounting
- Reduced protection circuits
- Improved temperature and power cycling

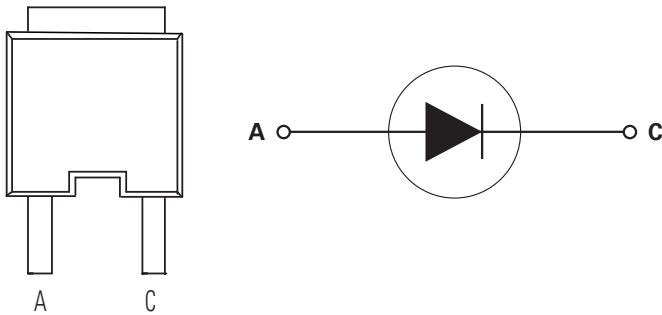
Applications:

- Low power rectifiers
- Field supply for DC motors
- Power supplies
- High voltage rectifiers

Product Summary

Characteristic	Value	Unit
V_{RRM}	1200–1800	V
$I_{F(RMS)}$	7	A
I_{FAVM}	2.3	A

Pinout Diagram



A: Anode; **C:** Cathode

Maximum Ratings

Symbol	Characteristics	Conditions	Value	Units
$I_{F(RMS)}$	RMS Forward Current	$T_{VJ} = T_{VJM}$	7	A
$I_{F(AVJM)}$	Maximum Average Forward Current	$T_{amb} = 45^{\circ}\text{C}$; $R_{thJA} = 38 \text{ K/W}$; 180° sine	2.3	A
		$T_{amb} = 45^{\circ}\text{C}$; $R_{thJA} = 80 \text{ K/W}$; 180° sine	1.3	A
P_{RSM}	Maximum Surge Reverse Power Dissipation	T_{VJM} ; $t_p = 10 \text{ ms}$	1.6	kW
I_{FSM}	Maximum Surge Forward Current	$T_{VJ} = 45^{\circ}\text{C}$; $t = 10 \text{ ms}$ (50 Hz), sine	110	A
		$T_{VJ} = 45^{\circ}\text{C}$; $t = 8.3 \text{ ms}$ (60 Hz), sine	118	
		$T_{VJ} = 150^{\circ}\text{C}$; $t = 10 \text{ ms}$ (50 Hz), sine	100	A
		$T_{VJ} = 150^{\circ}\text{C}$; $t = 8.3 \text{ ms}$ (60 Hz), sine	104	
I^2t	I^2t Value for Fusing	$T_{VJ} = 45^{\circ}\text{C}$; $t = 10 \text{ ms}$ (50 Hz), sine	60	A^2s
		$T_{VJ} = 45^{\circ}\text{C}$; $t = 8.3 \text{ ms}$ (60 Hz), sine	58	
		$T_{VJ} = 150^{\circ}\text{C}$; $t = 10 \text{ ms}$ (50 Hz), sine	50	A^2s
		$T_{VJ} = 150^{\circ}\text{C}$; $t = 8.3 \text{ ms}$ (60 Hz), sine	45	
T_{VJ}	Virtual Junction Temperature	–	–40 to +150	$^{\circ}\text{C}$
T_{VJM}	Maximum Virtual Junction Temperature	–	150	$^{\circ}\text{C}$
T_{stg}	Storage Temperature	–	–40 to +150	$^{\circ}\text{C}$

Static Characteristics

Symbol	Characteristics	Conditions		Value		Units
				Typ.	Max.	
I_R	Reverse Current	$T_{VJ} = T_{VJM}$	$V_R = V_{RRM}$	–	0.7	mA
V_F	Forward Voltage	$I_F = 7 \text{ A}$	$T_{VJ} = 25^{\circ}\text{C}$	–	1.34	V
V_{TO}	Threshold Voltage	For power-loss calculation only		–	0.8	V
r_T	Slope Resistance	$T_{VJ} = T_{VJM}$		–	67	$\text{m}\Omega$

Thermal Specifications

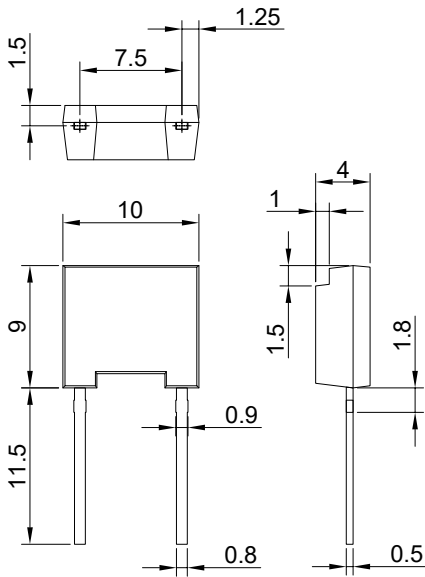
Symbol	Characteristics	Conditions	Value		Unit
			Typ.	Max.	
R_{thJA}	Maximum Thermal Resistance, Junction to Ambient	Forced Air Cooling with 1.5 m/s; $T_{amb} = 45^{\circ}\text{C}$	–	38	K/W
		Soldered on to PC board; $T_{amb} = 45^{\circ}\text{C}$	–	80	K/W

Physical Specifications

Symbol	Characteristics	Conditions	Value		Unit
			Typ.	Max.	
wt	Weight	–	0.8	–	g
d_s	Creep distance on surface	–	–	8.5	mm
d_A	Strike distance through air	–	–	6.7	mm
a	Acceleration	–	–	100	m/s^2

Part Outline Drawing

Dimension in mm (1 mm = 0.0394")



Disclaimer Notice

Information furnished is believed to be accurate and reliable. However, users should independently evaluate the suitability of and test each product selected for their own applications. Littelfuse products are not designed for, and may not be used in, all applications. Read complete Disclaimer Notice at <http://www.littelfuse.com/disclaimer-electronics>.



Part of:

