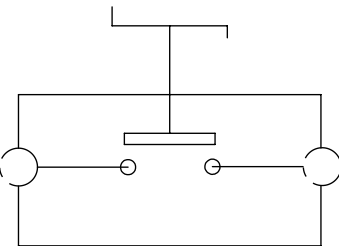
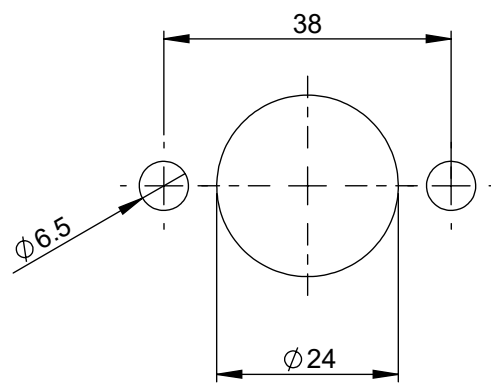


FIXING HOLES

ELECTRICAL DIAGRAM



9	00603900	Cap for Bms	Thermoplastic	1	EA
8	08099900	Key complete with cap	Polyamide, bras s and thermoplastic	1	EA
7		Eyelet	Iron	2	EA
6		Nut M8	Steel	4	EA
5		Spring washer To 8	Steel	4	EA
4		Washer Te 8.4x16	Steel	2	EA
3		Upper body cam double	Polyamide	1	EA
2		Power stud	Copper	2	EA
1		Lower body cont.-holder hole	Polyamide	1	EA
POS.	P/N	DESCRIPTION	MATERIAL	Q.TY	U/M

FEATURES

- Nominal voltage: 14V-28V
- Max direct current: 100A
- Max short time current: 500A for 5 seconds at $23 \pm 5^{\circ}\text{C}$
- Number of electrical operations: 5000
- Number of mechanical operations: 5000
- M8 nuts tightening torque: $6 \pm 1 \text{ Nm}$
- Supplying conditions: key, protection casing and cap are disassembled

ASSEMBLY KEY




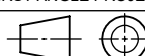
To assemble the key, insert it and turn it clockwise of 50° taking the device in stated Switched OFF; to remove it, with the device in state Switched OFF turn it counterclockwise of 50° and extract it

OPERATION

- To close (switch on) the contacts: turn clockwise the key of 90°
- To open (switch off) the contacts: turn counterclockwise the key of 90°

SAP drawing number:

Material and treatments:

DIMENSIONS AND TOLERANCES IN MILLIMETERS, DEFINED ACCORDING TO ISO 1101-2017.								
linear dimensions								
0,5 3	>3 6	>6 30	>30 120	>120 400	>400 1000	>1000 2000		
±0,2	±0,3	±0,5	±0,8	±1,2	±2	±3		
angle (for range of lengths)								
up to 10	>10 50	>50 120	>120 400					
±1°30'	±1°	±0°30'	±0°15'					
	FIT/ FUNCTION CRITICAL CHARACTERISTICS SYMBOL							
<S>	SAFETY/ CRITICAL CHARACTERISTICS SYMBOL							
CPK	DENOTES CPK DIMENSIONS MINIMUM CPK VALUE							
	DENOTES A CHARACTERISTIC THAT PROVIDES AN INDICATION OF PROCESS PERFORMANCE PROCEDURE FOR MEASUREMENT AND TRACKING TO BE DEFINED IN LITTELFUSE INSPECTION INSTRUCTIONS							
CP	DENOTES CP DIMENSIONS. -MINIMUM CP VALUE MUST BE WITHIN THE DIMENSIONAL LIMITATIONS SHOWN ON DRAWING AND INITIALLY LOCATED TO ALLOW FOR MAXIMUM TOOL LIFE							
NAME		DATE		 Littelfuse® Expertise Applied Answers Delivered				
DRAWN		L. Dal Molin					09-Apr-19	
CHECKED								
FORM NO. CVP-PE40-0013 REV A				TITLE				
FIRST ANGLE PROJECTION				BATTERY MAIN SWITCH IGC				
				SIZE: A2		DWG. NO. OL-08099000	OUTLINE REV. A	
DO NOT SCALE DRAWING				SCALE 1:1		SHEET 1 OF 1		