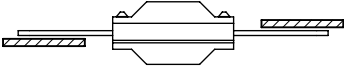
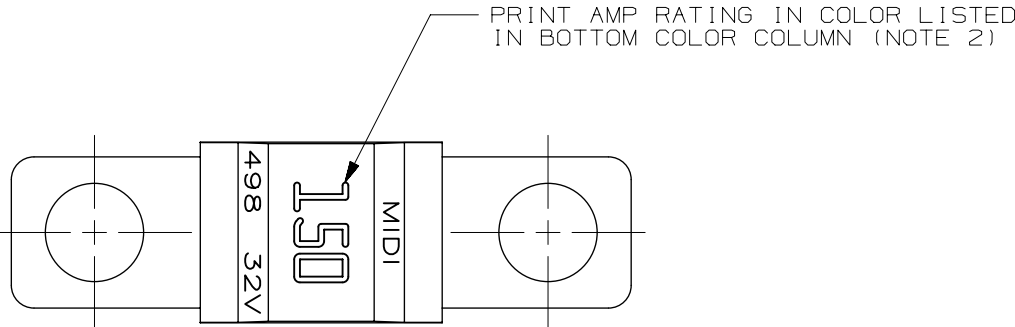
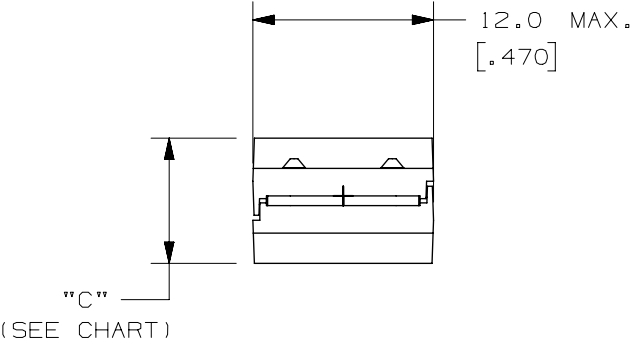
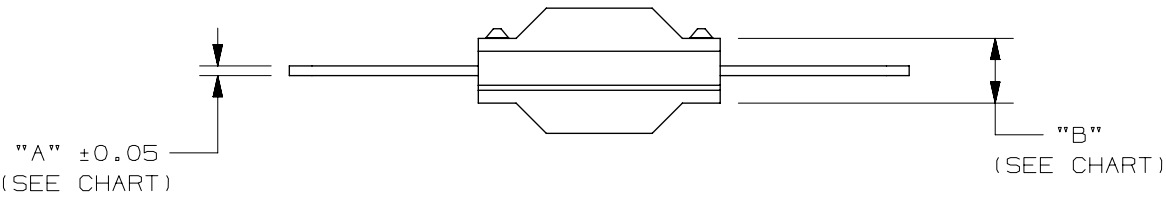
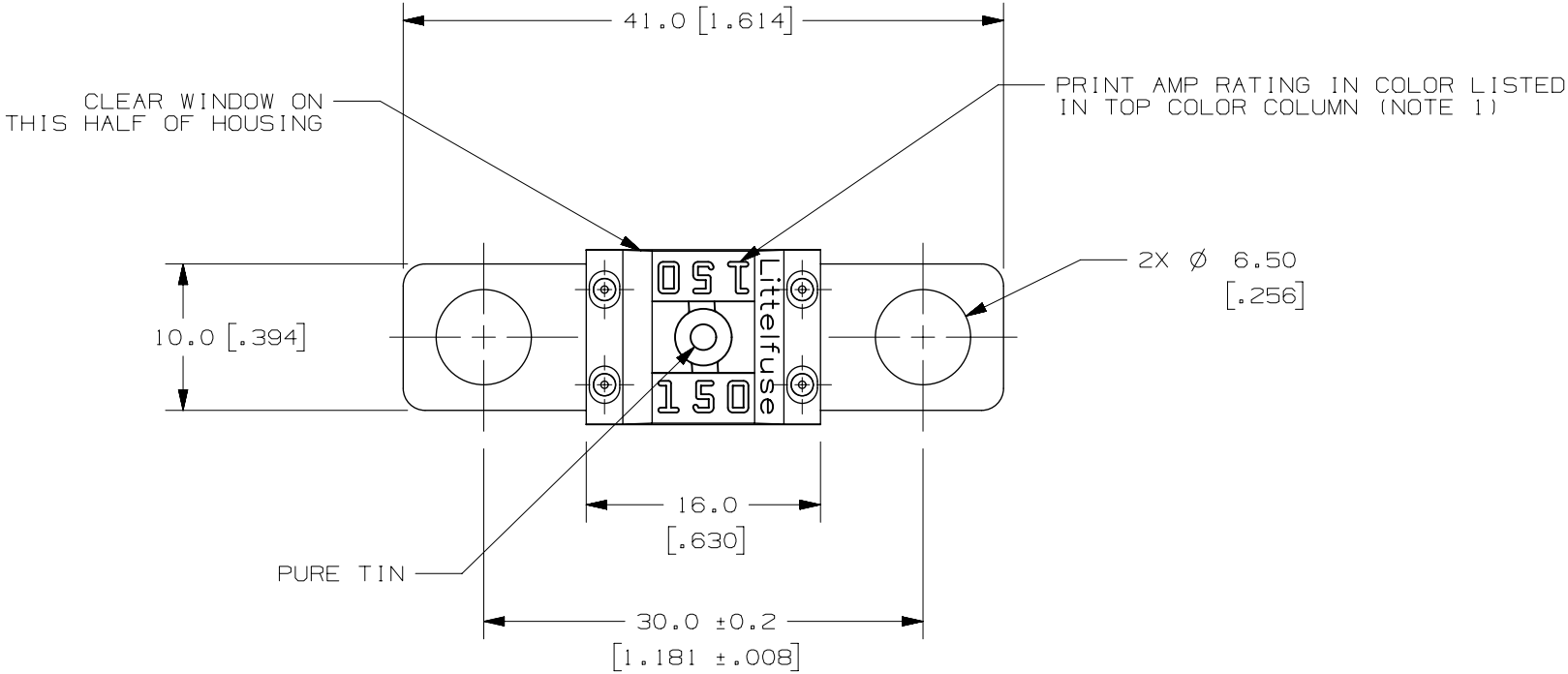
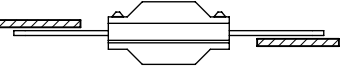


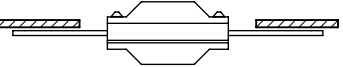
PART NUMBER	AMP RATING	D.C. VOLT RATING	COLOR OF PRINTING		"A"	"B"	"C"
			TOP	BOTTOM			
0498150.MXTM6	150	32	BLACK	GREY	0.63 [ .025 ]	4.3 [ .169 ]	8.3 [ .327 ]
0498175.MXTM6	175	32	DARK GREEN	DARK GREEN	0.63 [ .025 ]	4.3 [ .169 ]	8.3 [ .327 ]
0498200.MXTM6	200	32	VIOLET	VIOLET	0.63 [ .025 ]	4.3 [ .169 ]	8.3 [ .327 ]



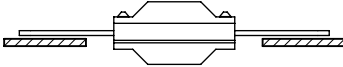
INCORRECT



INCORRECT



CORRECT



CORRECT

SEE NOTE 3




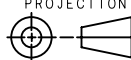

- NOTES:
1. ALL CHARACTERS ARE MODIFIED ANSI OCR-A.
  2. ALL CHARACTERS ARE ANSI OCR SIZE III.
  3. CABLE TERMINALS THAT CONNECT TO MIDI FUSE TERMINALS MUST LIE IN THE SAME PLANE. NON-COPLANARITY NOT TO EXCEED ±0.2mm.
  4. RECOMMENDED TORQUE FORCE IS 5.5-6.5 NEWTON-METER [ 48-57 IN-LBS ].

LTR	DATE	REVISION	CHK	APD
G	06/13/07	85460D-REDRAWN IN UG GMB		
H	09/JUN/17	517705ECA-UPDATE VIEW OF HOUSING FOR "PAT PEND" LEGEND REMOTION.		

TIME CURRENT CHARACTERISTICS (LIMITS):

OVERLOAD % In	150A - 200A	
	MIN	MAX
75	100 HRS	-
200	1 SEC	15 SEC
300	0.3 SEC	3 SEC
500	0.1 SEC	1 SEC

MAXIMUM VOLTAGE DROP LIMITS:  
150A - 200A (@75% OF In): 70 mV

NO	COMPONENT NO	DESCRIPTION	QTY/M	U/M				
BILL OF MATERIAL								
UNLESS OTHERWISE SPECIFIED, DIMENSIONS ARE IN MILLIMETERS. DIMENSIONS IN BRACKETS [ ] ARE INCHES								
UNLESS OTHERWISE SPECIFIED, DIMENSIONS DO NOT INCLUDE PLATING.								
	DENOTES CRITICAL CHARACTERISTICS.							
CPK	DENOTES CPK DIMENSIONS, -MINIMUM CPK VALUE							
	DENOTES A CHARACTERISTIC THAT PROVIDES AN INDICATION OF PROCESS PERFORMANCE. PROCEDURE FOR MEASUREMENT AND TRACKING TO BE DEFINED IN LITTELFUSE INSPECTION INSTRUCTIONS							
CP	DENOTES CP DIMENSIONS, -MINIMUM CP VALUE MUST BE WITHIN THE DIMENSIONAL LIMITATIONS SHOWN ON DRAWING AND INITIALLY LOCATED TO ALLOW FOR MAXIMUM TOOL LIFE							
COPIES TO		MATL SPEC ELEMENT - 99.9% Cu, 1/2 HARD. Sn PLATED 1.0-3.0 μm HOUSING - CLEAR NYLON & BLACK NYLON						
1	9	18	FINISH					
2	10	19						
3	12	20						
4	13	21	DRW	PJM	DATE	08/10/04	SCALE	2:1
5	14	23	CHK	DATE		SUPER DR		
6	15	33	APPD	DATE		FINSH GOOD WT		
7	16	43				GRAMS/PIECE		
8	17	53						
TOLERANCE UNLESS OTHERWISE SPECIFIED								
ONE PLACE DEC +/- .3			THREE PLACE DEC +/- .050					
TWO PLACE DEC +/- .10			ANGULAR +/- 1°					
3RD ANGLE PROJECTION		TITLE						
		MIDI FUSE W/CLEAR WINDOW (M6 MOUNTING HOLES)						
		REVISION		DRWG. NO.		OUTLINE		
		H		0498000.MXTM6		SERIES		
DES PLAINES, ILLINOIS 60016								

CAD GENERATED DRAWING - NO PENCIL CHANGES ALLOWED