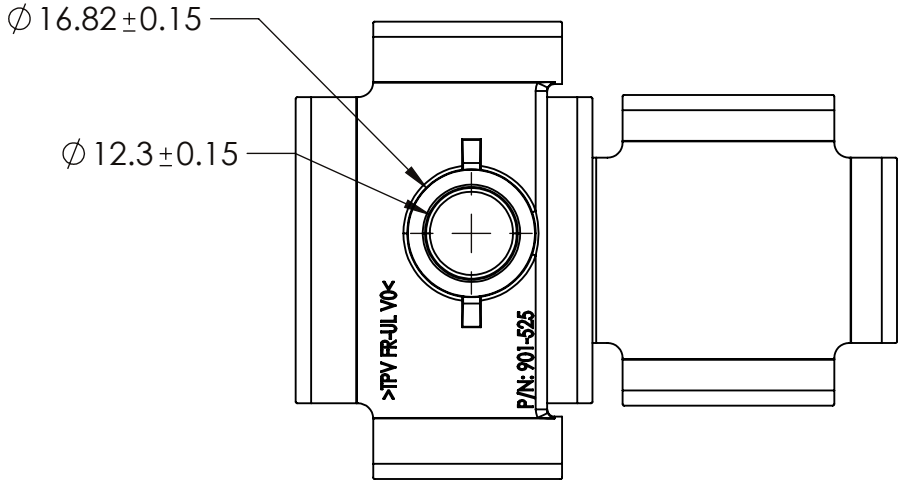
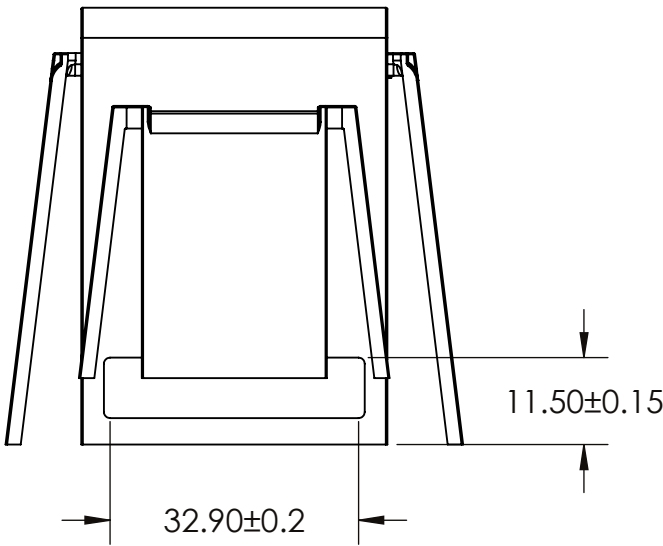
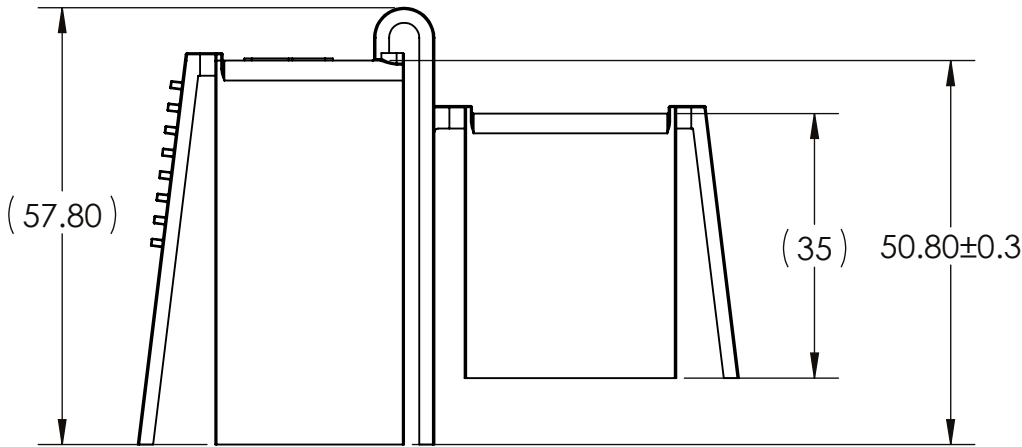
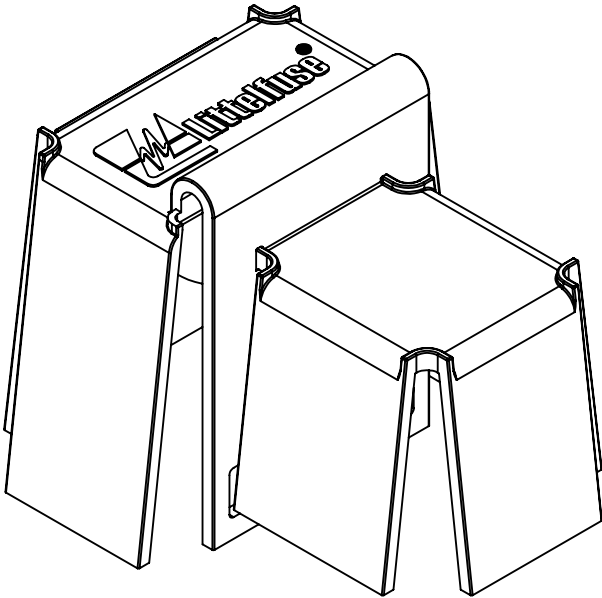
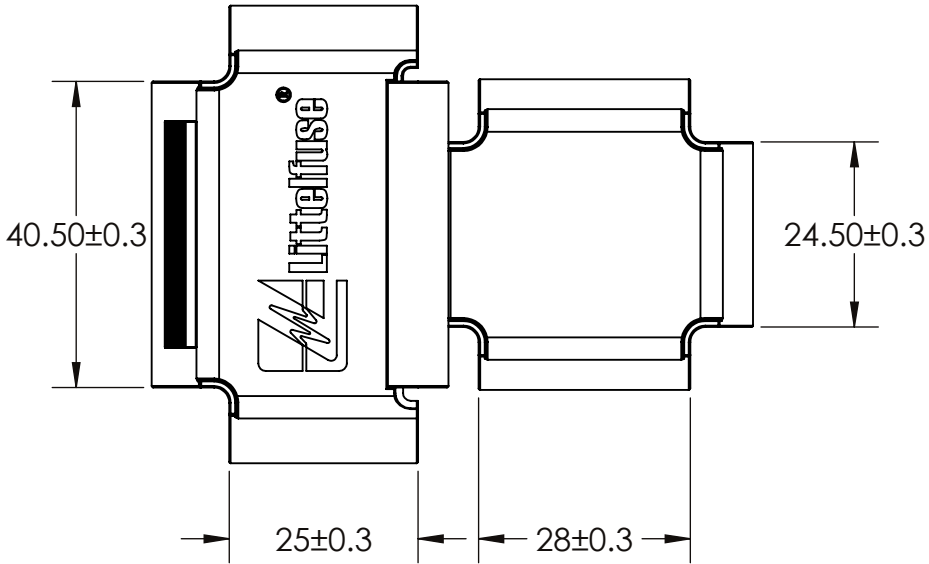



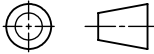


THIS DRAWING AND THE INFORMATION CONTAINED WITHIN IT ARE CONFIDENTIAL AND MAY NOT BE COPIED OR DISCLOSED WITHOUT THE WRITTEN PERMISSION OF LITTELFUSE.

REVISIONS				
ZONE	REV.	DESCRIPTION	DATE	APPROVED
	A	GCF #524724 INITIAL RELEASE. D.SILVA	1/25/2022	L.ARGIL



- NOTES:
1. ASSOCIATED 3D CAD FILE DEFINES ALL NON-DIMENSIONED FEATURES.
 2. MATERIAL: THERMOPLASTIC VULCANIZATE (TPV), COLOR RED.
 3. SYMBOL ● INDICATES A CRITICAL DIMENSION OR FEATURE WHICH HAVE ASSEMBLY OR FUNCTION REQUIREMENT, ALL THESE DIMENSION SHOULD BE IN TOLERANCE.

TOLERANCES FOR PLASTIC PER SPI STANDARD FOR MOLDERS 1998. SEE NOTES FOR MATERIAL AND COMMERCIAL OR FINE TOLERANCES					
DIMENSIONS ARE SHOWN IN MILLIMETERS. DIMENSIONS AND TOLERANCES ARE DEFINED ACCORDING TO ANSI/ASME Y14.5-1994.					
PER CHI-NPDD20-0008 PROCEDURE		FIT/ FUNCTION CRITICAL CHARACTERISTICS			
	<S>	SAFETY/ COMPLIANCE CRITICAL CHARACTERISTICS SYMBOL			
	CPK	DENOTES CPK DIMENSIONS MINIMUM CPK VALUE			
		DENOTES A CHARACTERISTIC THAT PROVIDES AN INDICATION OF PROCESS PERFORMANCE.PROCEDURE FOR MEASUREMENTAND TRACKINGTO BE DEFINED IN LITTELFUSE INSPECTION INSTRUCTIONS			
	CP	DENOTES CP DIMENSIONS. -MINIMUM CP VALUE MUST BE WITHIN THE DIMENSIONAL LIMITATIONS SHOWN ON DRAWING AND INITIALLY LOCATED TO ALLOW FOR MAXIMUM TOOL LIFE			
DRAWN		NAME	DATE	<div>Littelfuse Expertise Applied Answers Delivered</div> <div>TITLE SINGLE ZCASE FUSE & STUD HOLDER</div>	
CHECKED		D.SILVA	1/6/2022		
		-	-		
		-	-		
		-	-		
FORM NO: CVP-PE40-0003 REV B				<div>SIZE B</div> <div>DWG. NO. OUTLINE</div> <div>OL-901-525</div> <div>REV. A</div>	
THIRD ANGLE PROJECTION					
					
DO NOT SCALE DRAWING				SCALE 1:1	SHEET 1 OF 1