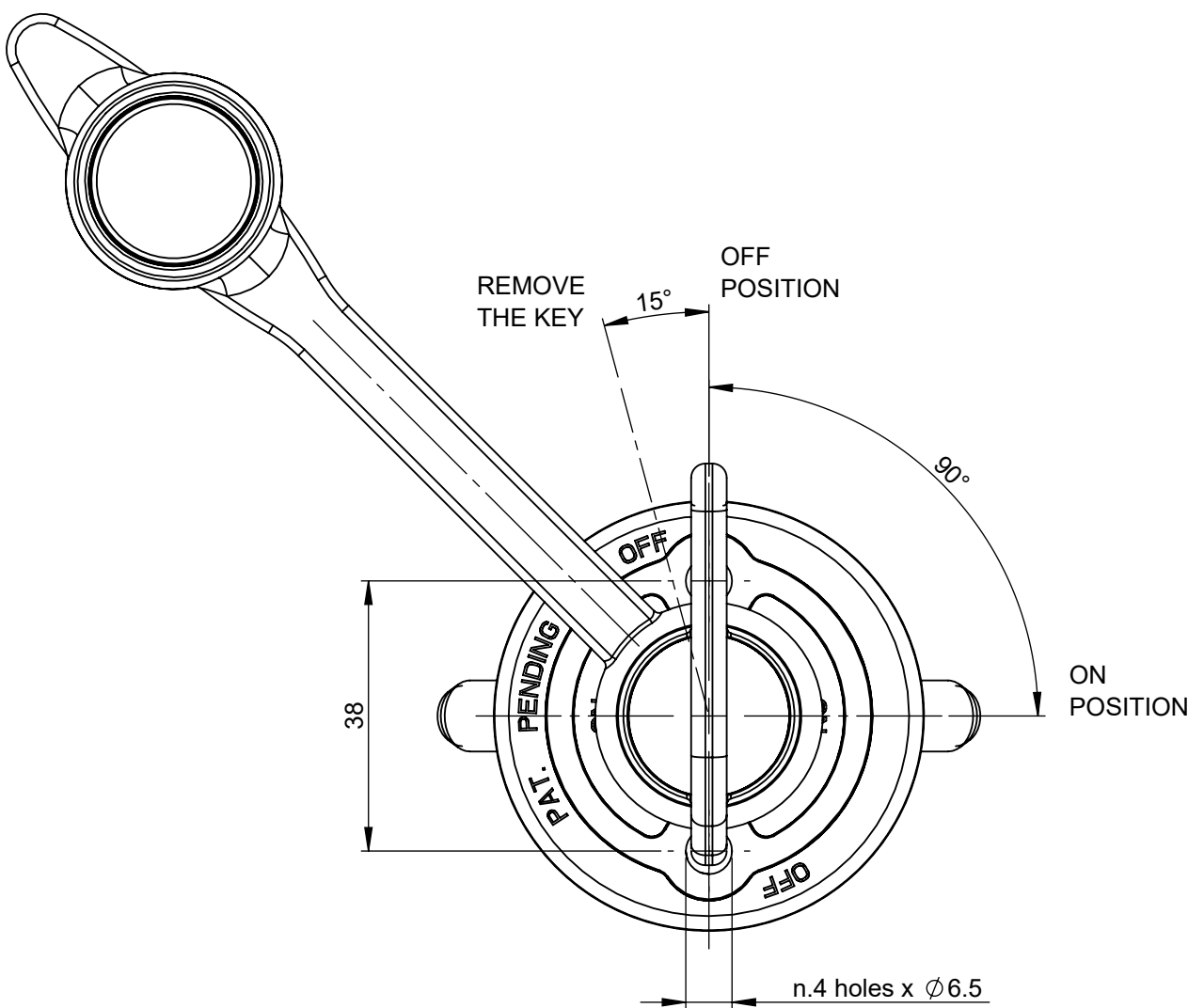
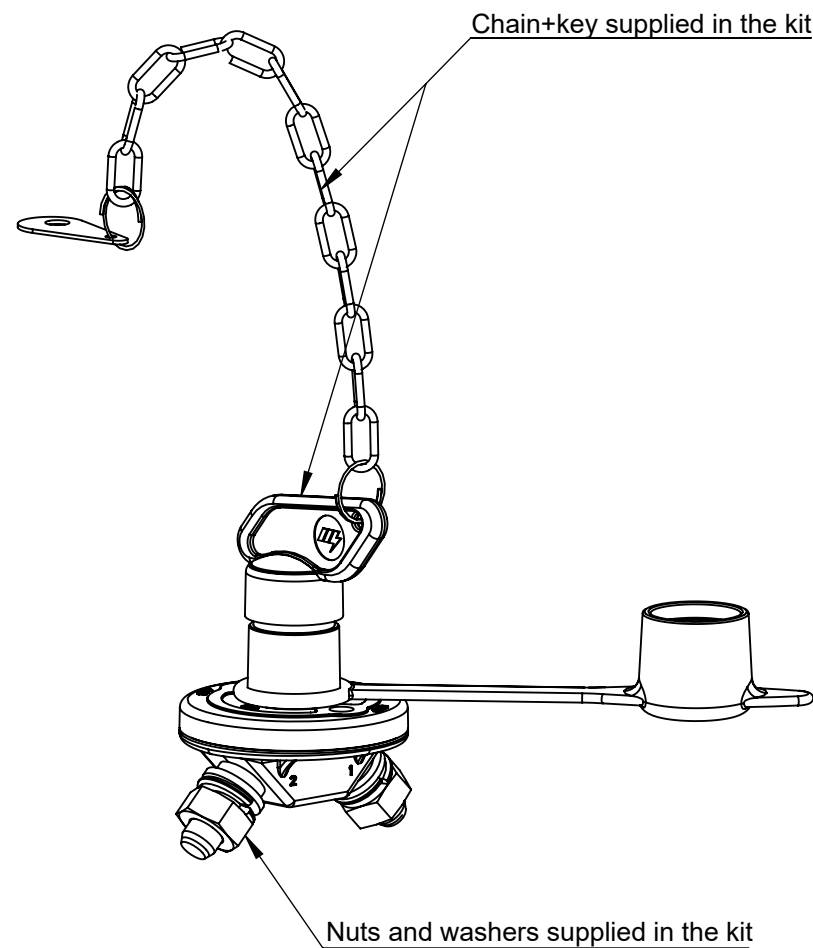
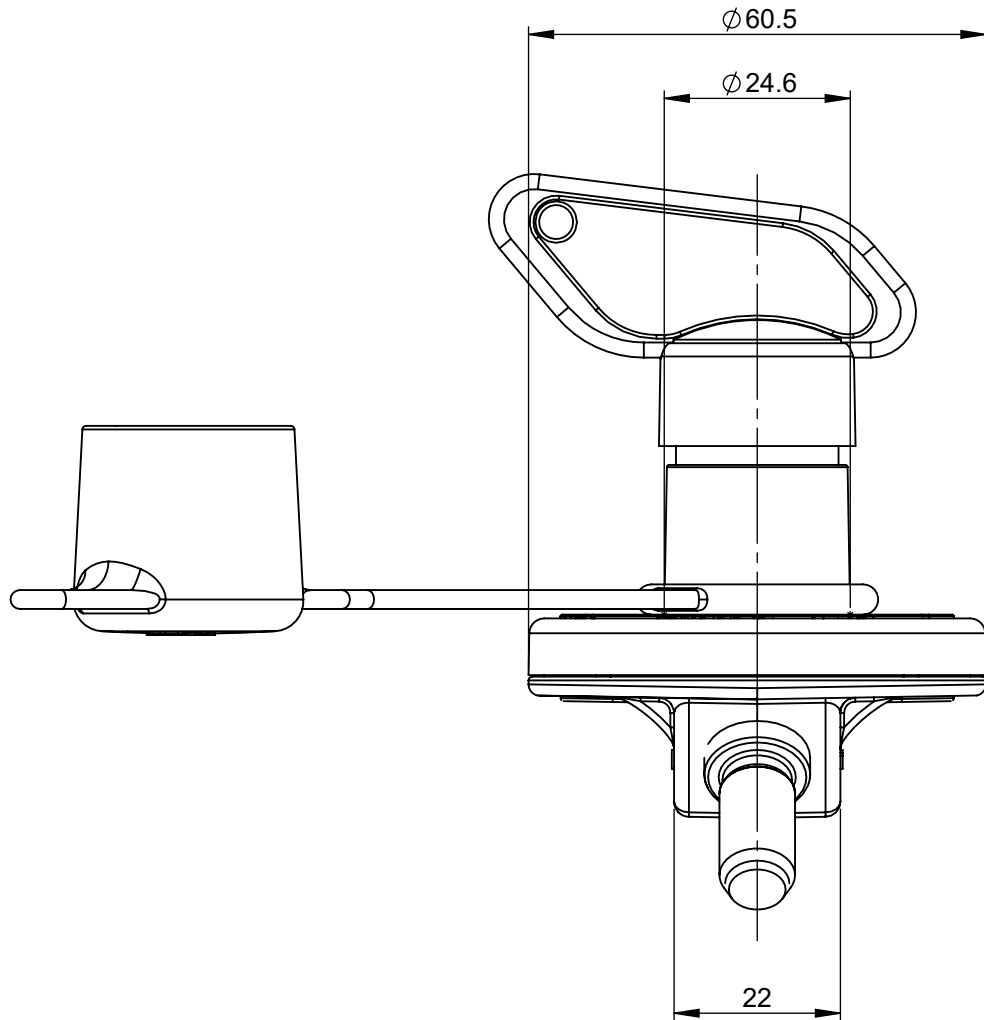
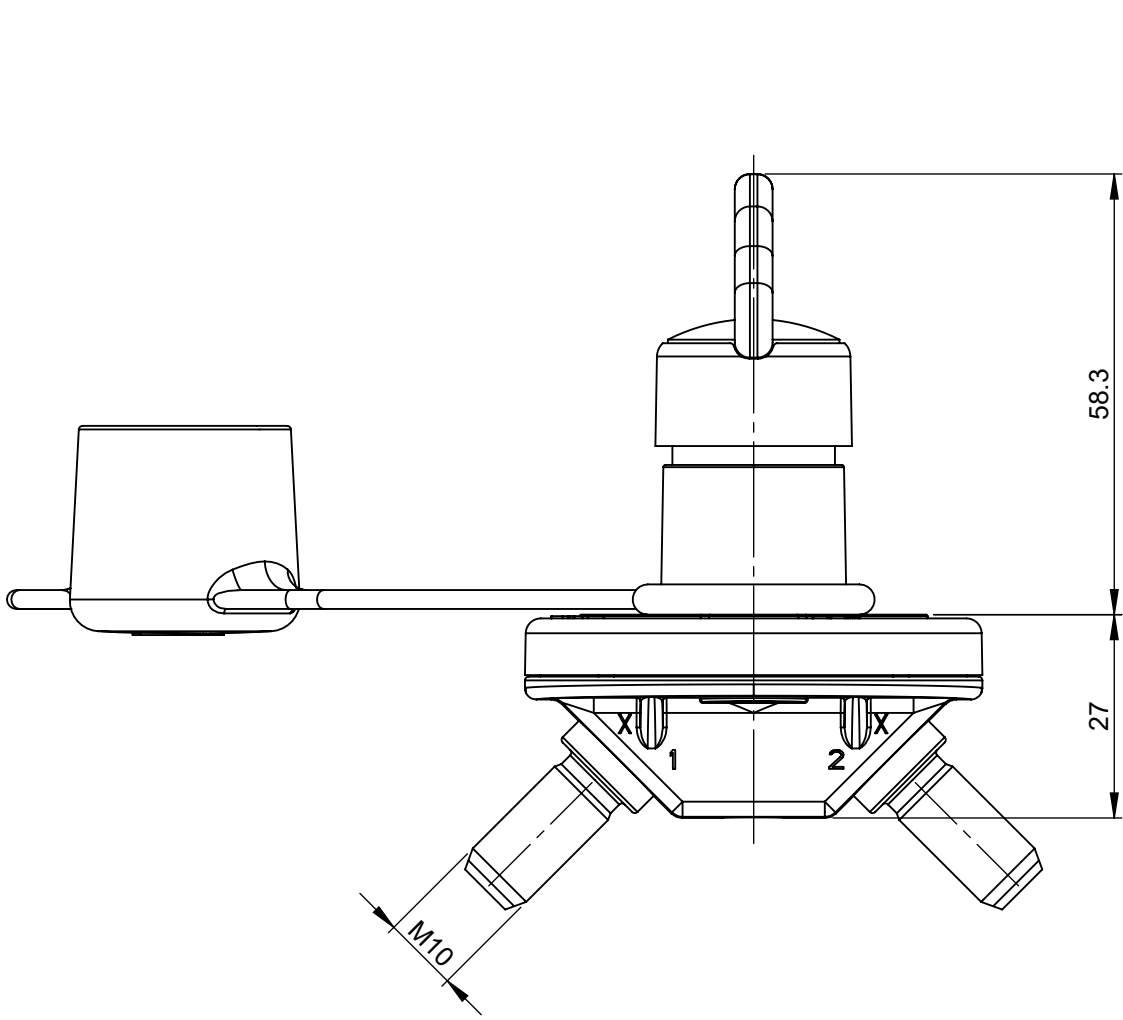


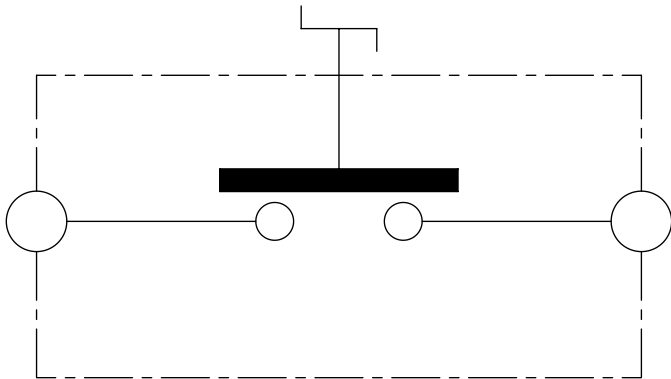
	4	3	2	1	
REVISIONS					
REV.	DESCRIPTION	DATE	GCF / ECR	DESIGNED	APPROVED
A	Initial release	22-Jun-22		L.Dal Molin	M.Tinto



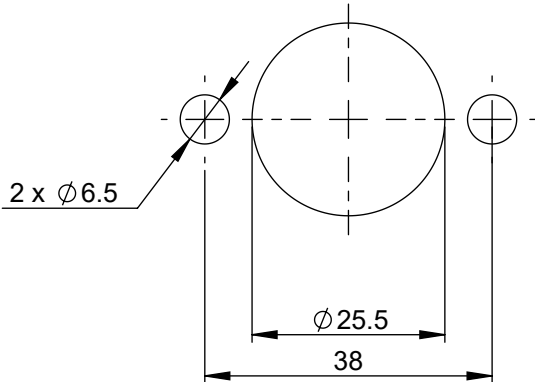
#### CHARACTERISTICS AND PRESCRIPTION


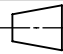

- Nominal voltage: 12-24V
- Maximum direct current: 150A
- Maximum short time current: 1200A for 5 sec at 23°C
- Number of electrical and mechanical cycles: 5.000
- M10 nuts tightening torque:  $20 \pm 2$  Nm
- Fix the device to th structure by screws and nuts M6 with tightening torque  $3.3 \pm 0.2$  Nm

Electrical diagram



Fixing holes



DIMENSIONS AND TOLERANCES IN MILLIMETERS, DEFINED ACCORDING TO ISO 1101-2017.						
linear dimensions						
0,5 3	>3 6	>6 30	>30 120	>120 400	>400 1000	>1000 2000
±0,2	±0,3	±0,5	±0,8	±1,2	±2	±3
angle (for range of lengths)						
up to 10	>10 50	>50 120	>120 400	>400 1000	>1000 2000	
±1°30'	±1°	±0°30'	±0°15'			
●	FIT/ FUNCTION CRITICAL CHARACTERISTICS SYMBOL					
<S>	SAFETY/ COMPLIANCE CRITICAL CHARACTERISTICS SYMBOL					
CPK	DENOTES CPK DIMENSIONS MINIMUM CPK VALUE					
ST	DENOTES A CHARACTERISTIC THAT PROVIDES AN INDICATION OF PROCESS PERFORMANCE PROCEDURE FOR MEASUREMENTAND TRACKINGTO BE DEFINED IN LITTELFUSE INSPECTION INSTRUCTIONS					
CP	DENOTES CP DIMENSIONS. -MINIMUM CP VALUE MUST BE WITHIN THE DIMENSIONAL LIMITATIONS SHOWN ON DRAWING AND INITIALLY LOCATED TO ALLOW FOR MAXIMUM TOOL LIFE					
	NAME	DATE	<div> <b>Littelfuse®</b></div> <div>Expertise Applied   Answers Delivered</div>			
DRAWN	L. Dal Molin	22-Jun-22				
CHECKED	-	-				
	-	-				
	-	-				
FORM NO: CVP-PE40-0013 REV A			TITLE			
FIRST ANGLE PROJECTION			MANUAL BDS IGC/175-C			
			SIZE: A2	DWG. NO.	OL-08080380	OUTLINE REV. A
DO NOT SCALE DRAWING			SCALE 1:1		SHEET 1 OF 1	