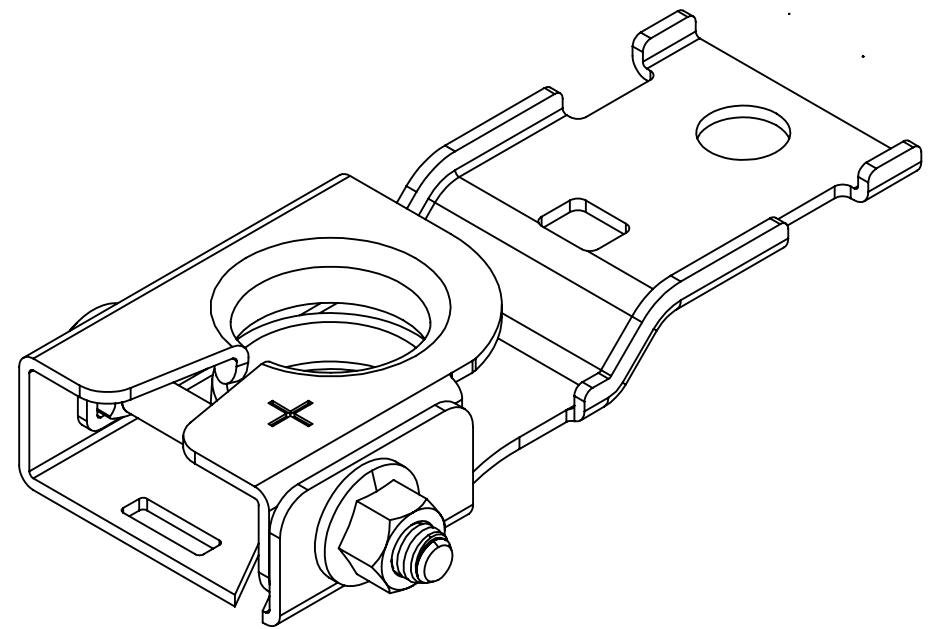
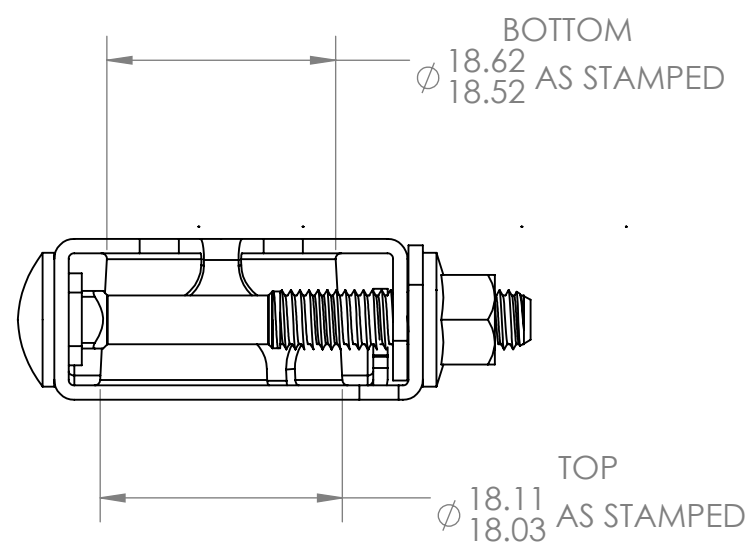
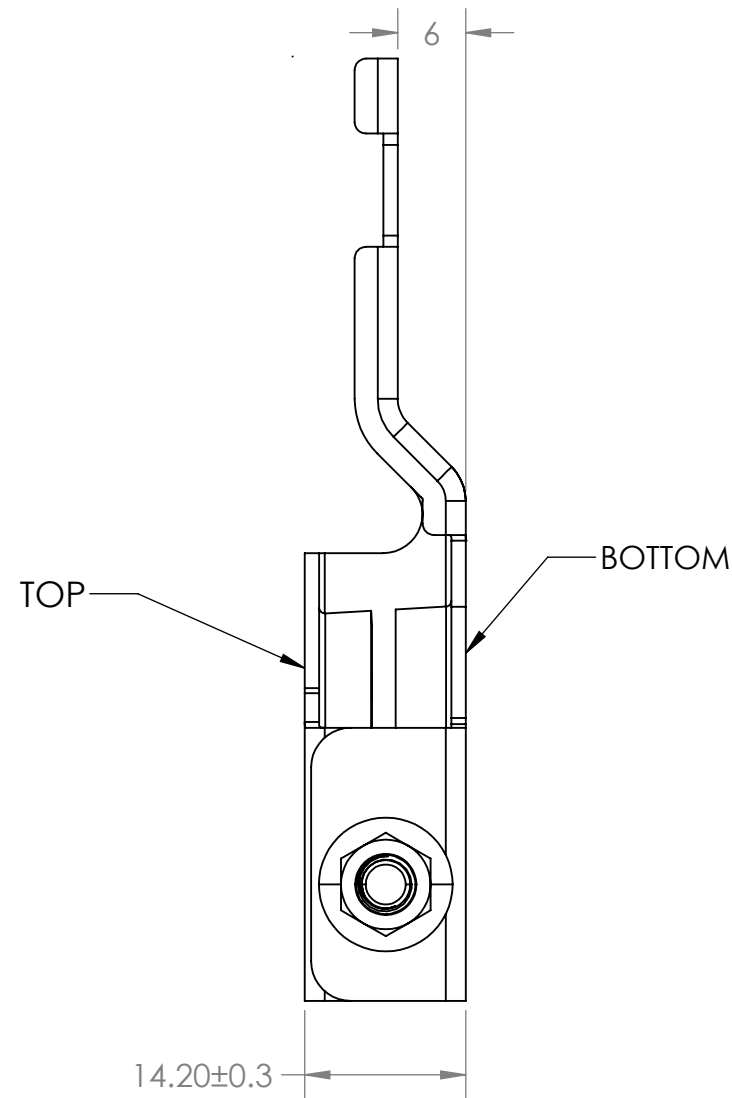
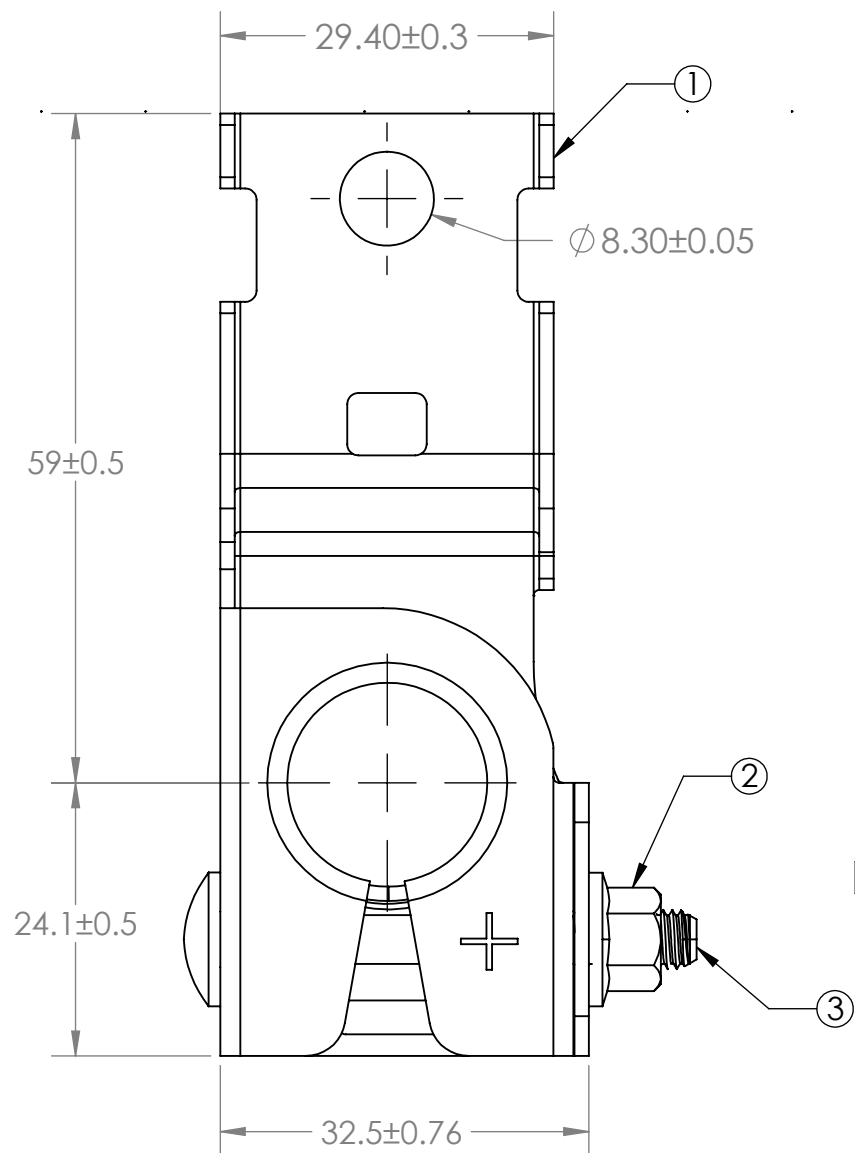


NOTE:

1. DYNAMIC TORQUE AT VEHICLE ASSEMBLY PLANT: 5.4Nm±0.9Nm @ 540 RPM MAX

REVISIONS				
ZONE	REV.	DESCRIPTION	DATE	APPROVED
	A	PER EC#514693: INITIAL RELEASE	6/22/2015	J. LIU



BOM			
ITEM	DESCRIPTION	MATERIAL	QTY
1	BATTERY TERMINAL	ALLOY C194, TIN PLATED WITH MINIMUM THICKNESS OF 0.001	1
2	M6 CARRAGE BOLT		1
3	M6 FLANGE NUT		1

DIMENSIONS ARE IN MM.

DIMENSIONS AND TOLERANCES ARE DEFINED ACCORDING TO ANSI / ASME Y14.5M-1994

THIS DRAWING AND THE INFORMATION CONTAINED WITHIN IT ARE CONFIDENTIAL AND MAY NOT BE COPIED OR DISCLOSED WITHOUT THE WRITTEN PERMISSION OF LITTELFUSE.

DRAWN	J. Liu	DATE	6/22/2015
CHECKED	-	-	-
-	-	-	-
-	-	-	-
-	-	-	-

THIRD ANGLE PROJECTION

Littelfuse

Experts Applied | Answers Delivered

805 W ORCHARD DR., STE 6, BELLINGHAM, WA 98226
Phone (360)738-9010 Fax (360)738-0372

TERMINAL ASSEMBLY-ZCASE FUSE HOLDER

SIZE	DWG. NO.	REV.
C	876-199	A

SCALE 1.5:1 SHEET 1 OF 1