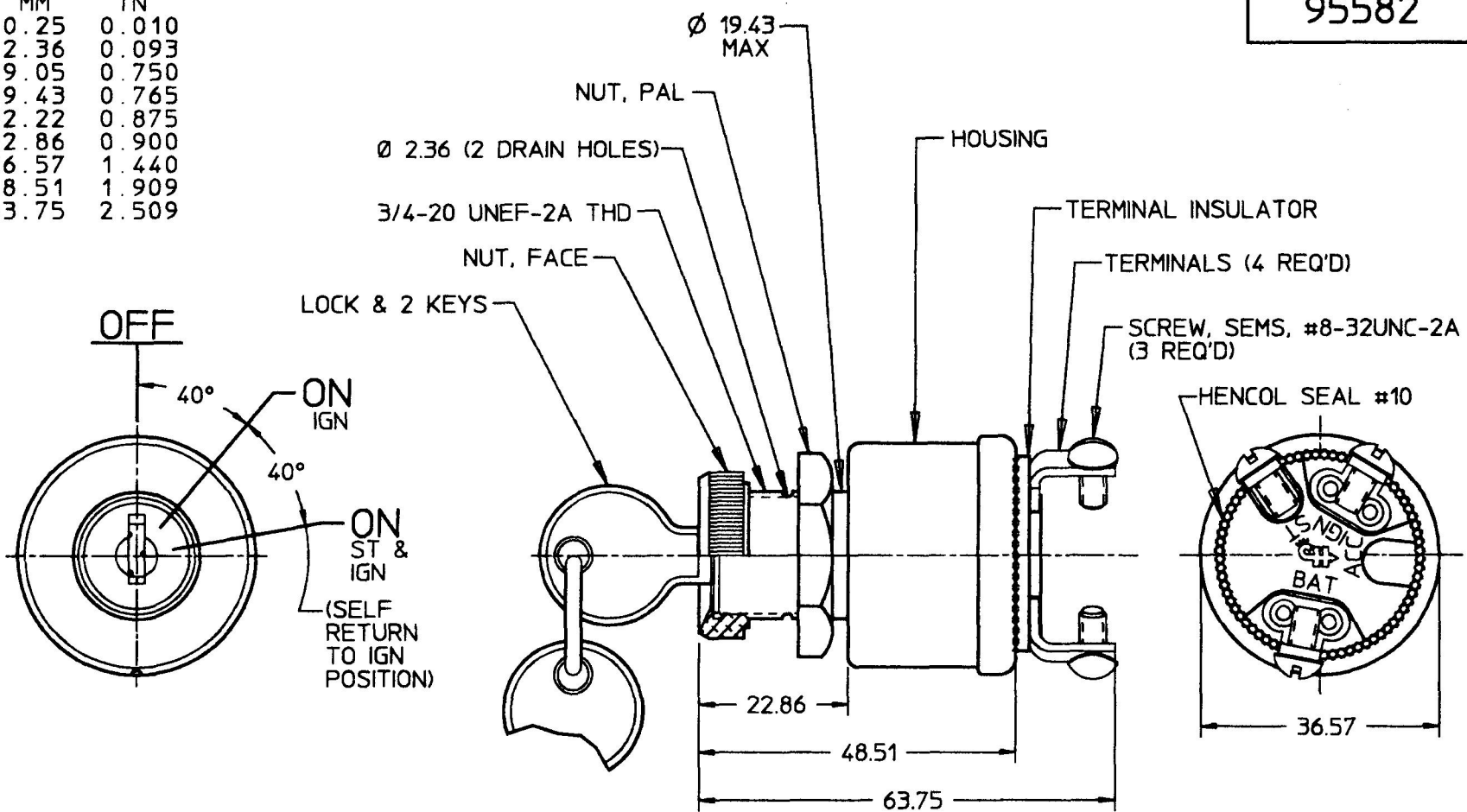


95582

MM	IN
0.25	0.010
2.36	0.093
19.05	0.750
19.43	0.765
22.22	0.875
22.86	0.900
36.57	1.440
48.51	1.909
63.75	2.509



- NOTES:
- 1. ALL STEEL PARTS EITHER ZINC PLT, DICHROMATE DIP. OR CAD PLT
 - 2. ADAPTER FACE NUT PERMITS SWITCH TO BE MOUNTED TO Ø 19.05 & 22.22 PANEL HOLES
 - 3. 'O' RING SEALED AT MOUNTING STEM
 - 4. APPLICABLE SAE STANDARD OR RECOMMENDED PRACTICE SAE J259
- DO NOT SCALE**

METRIC

LET.	WAS	DATE	BY	LET.	WAS	DATE	BY	MATERIAL	DRAWN	CHK	APVD	SCALE	DATE DRAWN
									RZ	AP		1:1	7/2/65
								FINISH	Cole Hersee Co. 20 OLD COLONY AVENUE, BOSTON, MA., U.S.A., 02127				DATE BLUEPRINTED
								TOLERANCES DECIMAL ±0.25 ANGLE ±	SW, ROT, 3 POS				95582
				N	PUT ON CAD ECN# 26017	11/2/95	JPT						