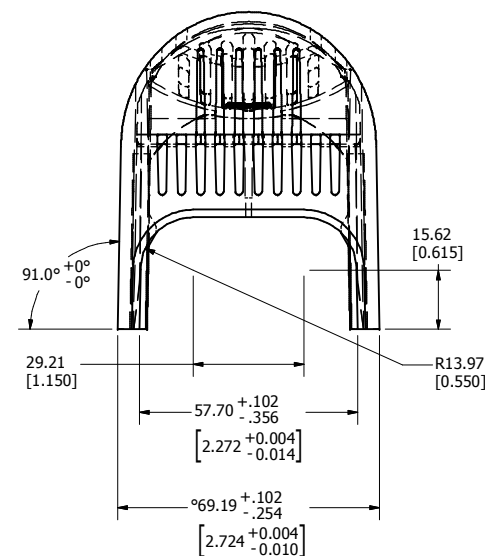
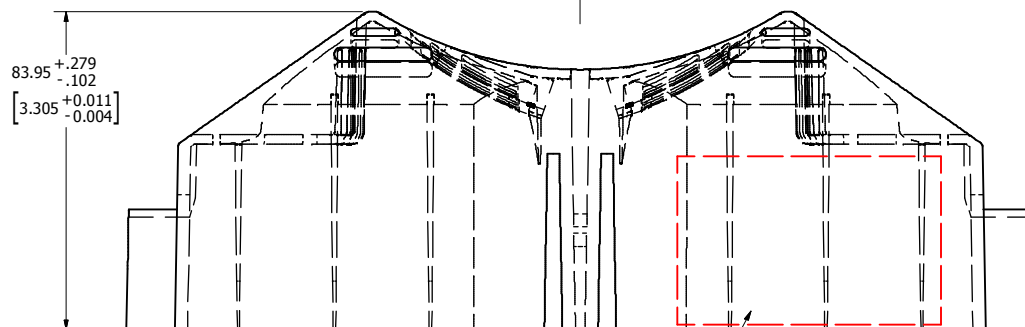
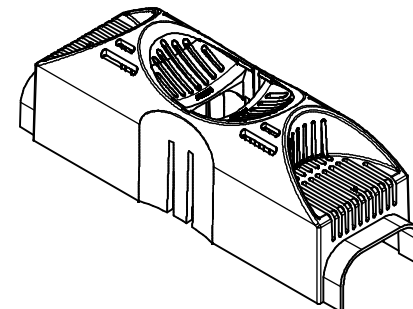
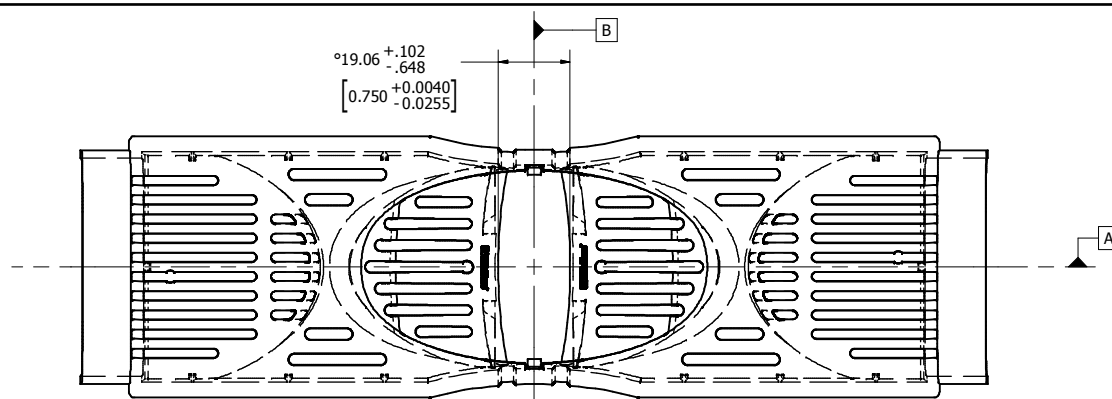
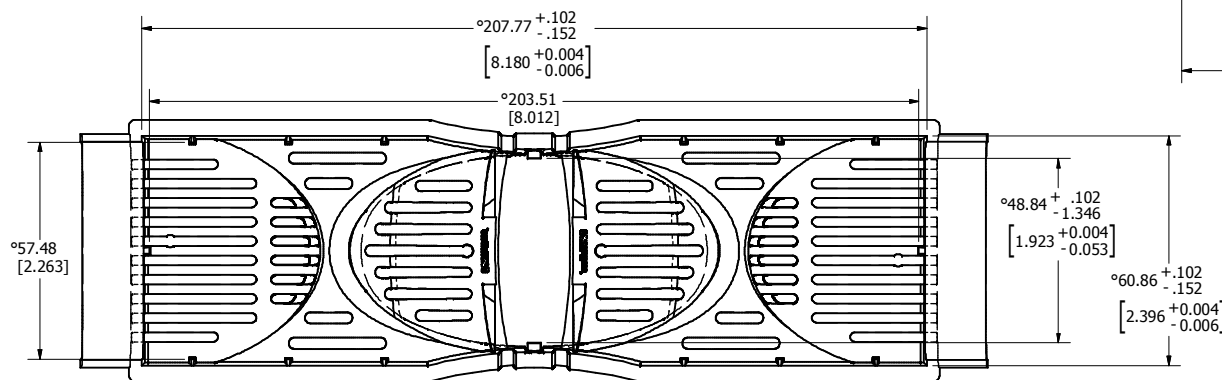


REVISION		DESCRIPTION
REV	DATE	
A	4/30/2009	000676R - RELEASE PER SALES RELEASE EM1062 LDL
B	8/11/2009	001223ECJD - ADD QUALITY INSPECTION DIMENSIONS LDL
C	9/11/2009	001274ECJD - ADD TOLERANCE DIMENSIONS LDL
D	9/13/2010	500710ECP/D - ADD GENERAL NOTES, ADD PRINTING LOCATION TO DETAIL MRY



PRINT PRODUCT INFORMATION ON ONE SIDE OF PART, SEE GENERAL NOTE 1



#### GENERAL NOTES

- 1.) Body print product information in white, one side in the area indicated (see LS-000084)
- 2.) Printing to be clear, legible, and not smeared.
- 3.) Individual packaging box must be of the appropriate size corresponding to part dimensions.
- 4.) Apply box label to the front side of box (see LS-000065).

#### NOTES

- 1.) Tooling to be built per math data provided by Littelfuse. Geometry per math to be within  $\triangle .25 [ABC]$  unless otherwise specified.
- 2.) Draft angles to be per Littelfuse math data unless otherwise specified.
- 3.) Parting lines, knockout pins, and gate location to be approved by Littelfuse Engineering.
- 4.) Parting lines, knockout pins, and lifter flash shall be 0.13 mm max unless otherwise specified.
- 5.) Corners shown as sharp have a 0.25 mm radius max, unless otherwise specified by Littelfuse Engineering.
- 6.) All cavities shall be identified. Check with Littelfuse Engineering for preferred location.
- 7.) Parts to be clean and free of cracks, foreign matter, chips, weld or flow lines, sink discoloration, pin holes, voids, roughness, or warpage unless accepted by Littelfuse Engineering.
- 8.) Dimensions to be measured at location of maximum draft, unless otherwise specified by Littelfuse Engineering.
- 9.) Packaging carton to contain this part and to be made with part number and current revision level.
- 10.) The  $\phi$  symbol indicates the dimension for inspection purposes.
- 11.) Maximum regrind allowed: 25%.
- 12.) UPC Code 07945818282.

● DENOTES CRITICAL CHARACTERISTICS.	
CPK	DENOTES CPK DIMENSIONS, -MINIMUM CPK VALUE
(ST)	DENOTES A CHARACTERISTIC THAT PROVIDES AN INDICATION OF PROCESS PERFORMANCE. PROCEDURE FOR MEASUREMENT AND TRACKING TO BE DEFINED IN LITTELFUSE INSPECTION INSTRUCTIONS.
CP	DENOTES CP DIMENSIONS, -MINIMUM CP VALUE MUST BE WITHIN THE DIMENSIONAL LIMITATIONS SHOWN ON DRAWING AND INITIALLY LOCATED TO ALLOW FOR MAXIMUM TOOL LIFE.
MATERIAL SPEC. Valox 420SE0	
FINISH Color BK1066 (Sabic black)	
DRW Chris Miller	DATE 3/13/2009
SCALE NTS	FINISH GOOD WT GRAMS/PIECE
UNLESS OTHERWISE SPECIFIED, DIMENSIONS ARE IN MILLIMETERS, DIMENSIONS IN BRACKETS [ ] ARE INCHES DIMENSIONING AND DO NOT INCLUDE PLATING. TOLERANCING TO BE INTERPRETED IN ACCORDANCE WITH ANSI Y14.5M-1994	
3RD ANGLE PROJECTION	TOLERANCE UNLESS OTHERWISE SPECIFIED ONE PLACE DEC $\pm .25 [0.01]$ FRACTION $\pm$ TWO PLACE DEC $\pm .100 [0.004]$ ANGULAR $\pm 1^\circ$
TITLE 600V Class T 600A Fuse Block Cover	
Littelfuse <sup>®</sup> DES PLAINES, ILLINOIS 60016	
REVISION D	DRWG NO. LT60600FBC