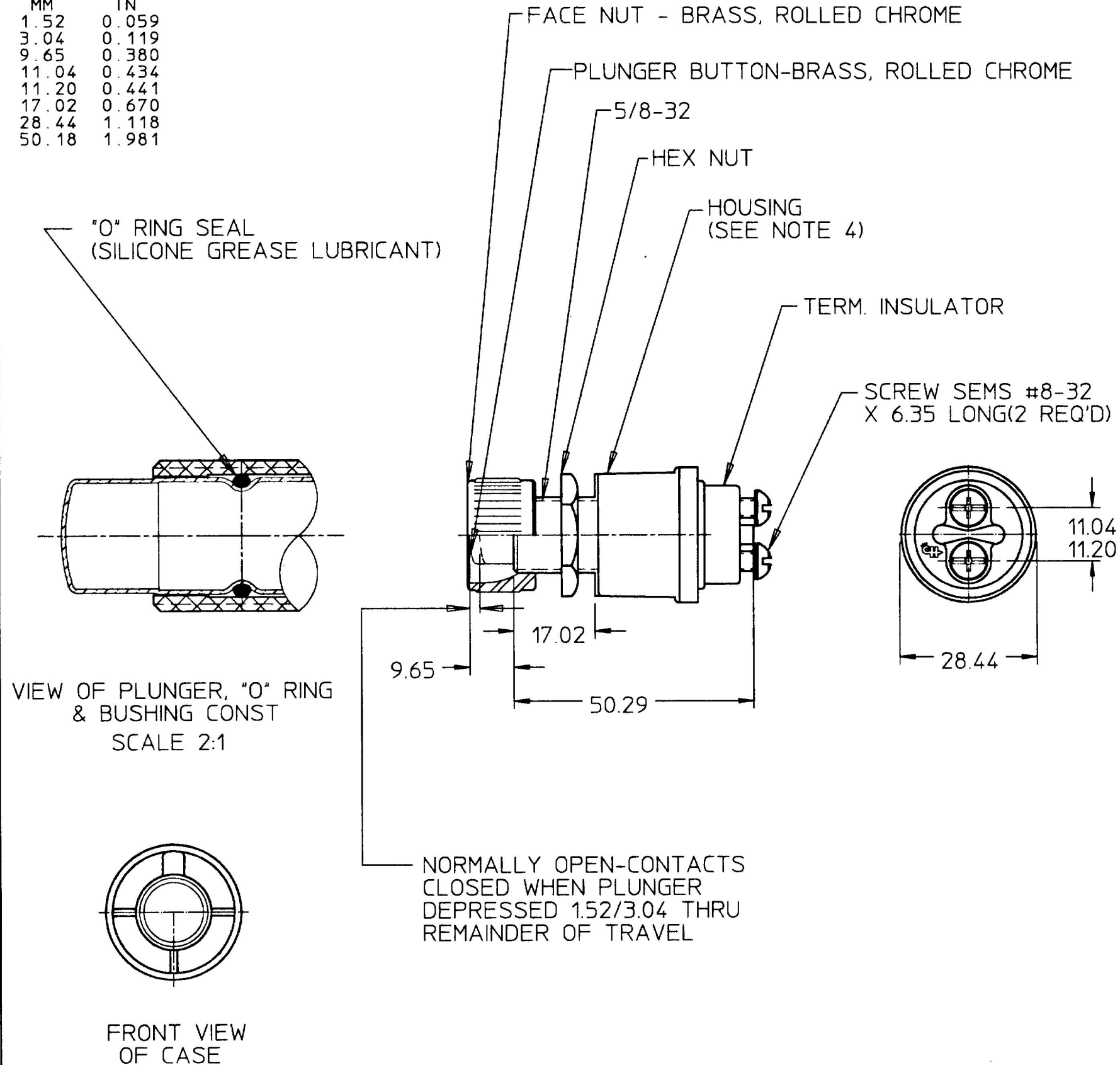


MM	IN
1.52	0.059
3.04	0.119
9.65	0.380
11.04	0.434
11.20	0.441
17.02	0.670
28.44	1.118
50.18	1.981



- NOTES:
1. SOLID SILVER RIVET STATIONARY CONTACT, SILVER LAMINATED MOVING CONTACT
  2. NUMBER OF POLES: 1  
NUMBER OF THROWS: 1
  3. SEALING:  
"O" RING SEAL BETWEEN PLUNGER AND MOUNTING STEM
  4. HOUSING: ZINC DIE CAST-60-DEEP DICHROMATE DIP
  5. ALL STEEL PARTS EITHER ZINC PLATED WITH DICHROMATE DIE OR CADMIUM PLT
  6. RATING:  
12V DC: RESISTIVE 35 AMPS  
INDUCTIVE 30 AMPS  
24V DC: RESISTIVE 20 AMPS  
INDUCTIVE 18 AMPS
  7. LIFE @ RATED CURRENT  
MAKE AND BREAK  
12V & 24V-100,000 MIN.
  8. ALL DIMENSION REFERENCE ONLY UNLESS NOTED OTHERWISE

DO NOT SCALE

METRIC

LET.	WAS	DATE	BY	LET.	WAS	DATE	BY	MATERIAL	DRAWN	CHK	APVD	SCALE	90000 W/SPEC.	DATE DRAWN
								N/A	KG	PS	N/A	1:1	FACE NUT	02/03/67
								FINISH						
				M	ECN #00381	05/09/00	MK	N/A						
				L	PUT ON CAD	05/05/00	MK							
				--	ISSUED	02/06/77	TR	TOLERANCES						
								DECIMAL ±						
								ANGLE ±						



**Cole Hersee Co.**  
20 OLD COLONY AVENUE, BOSTON, MA., U.S.A. 02127

START SWITCH

90000-01