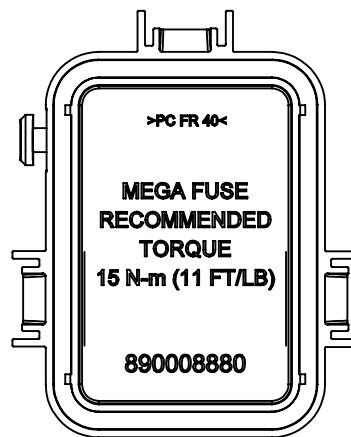
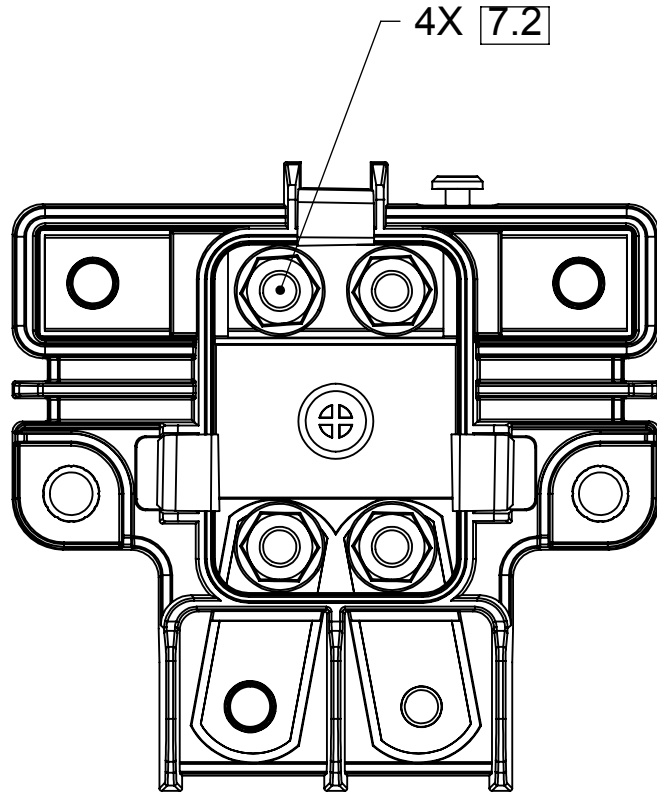
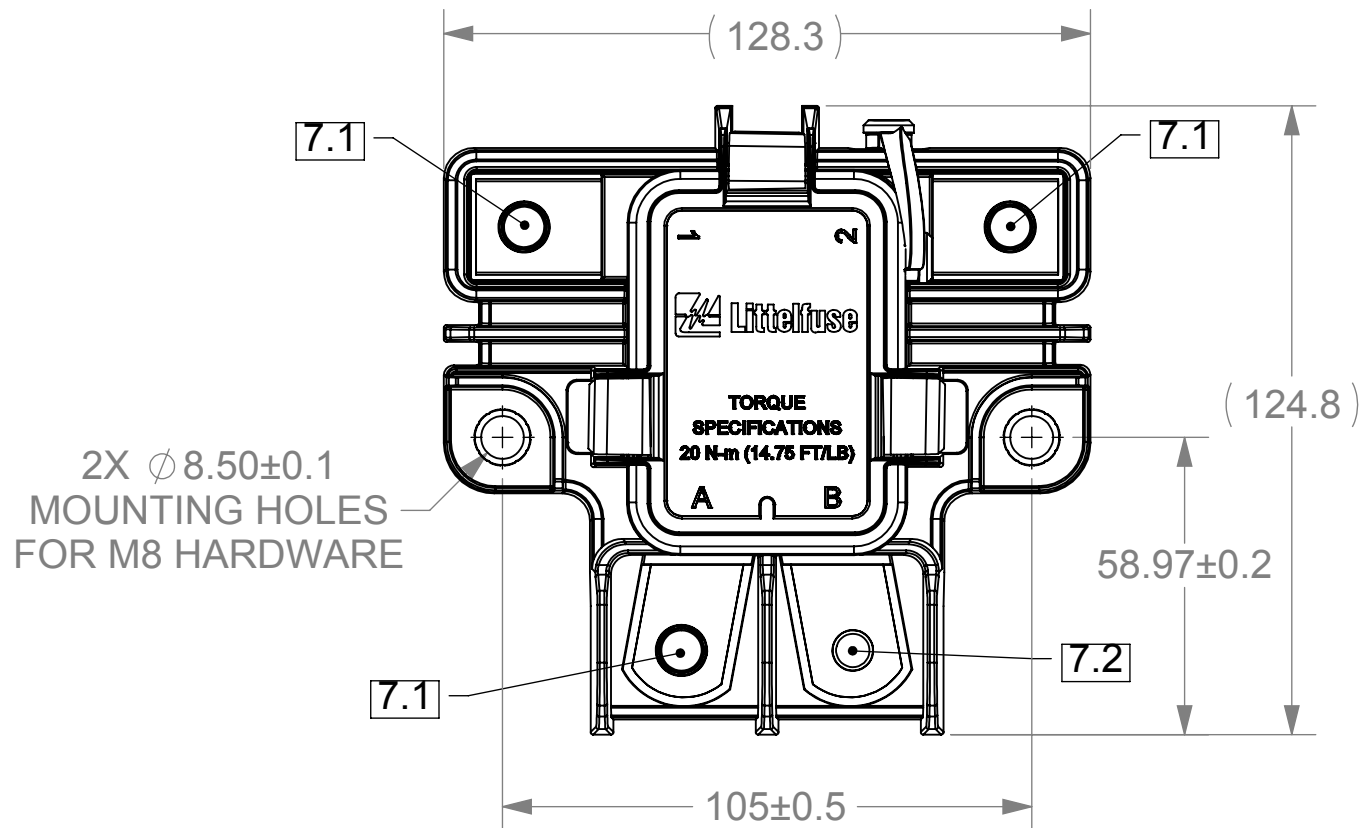
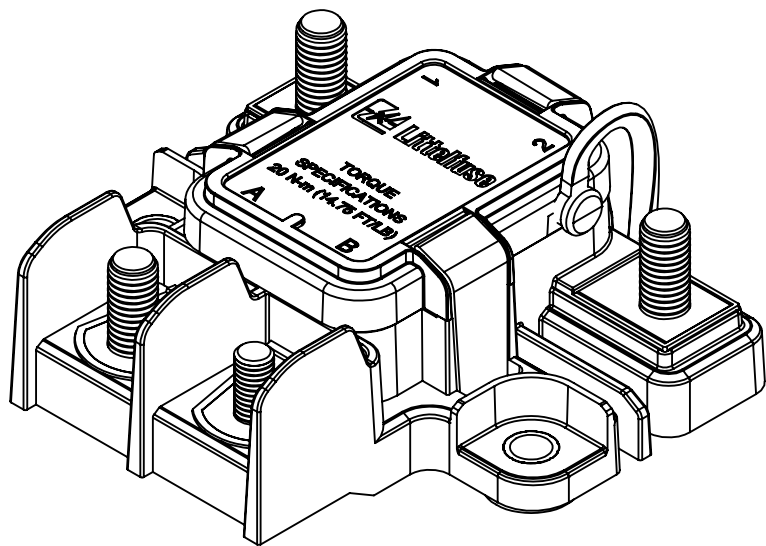


NOTES:

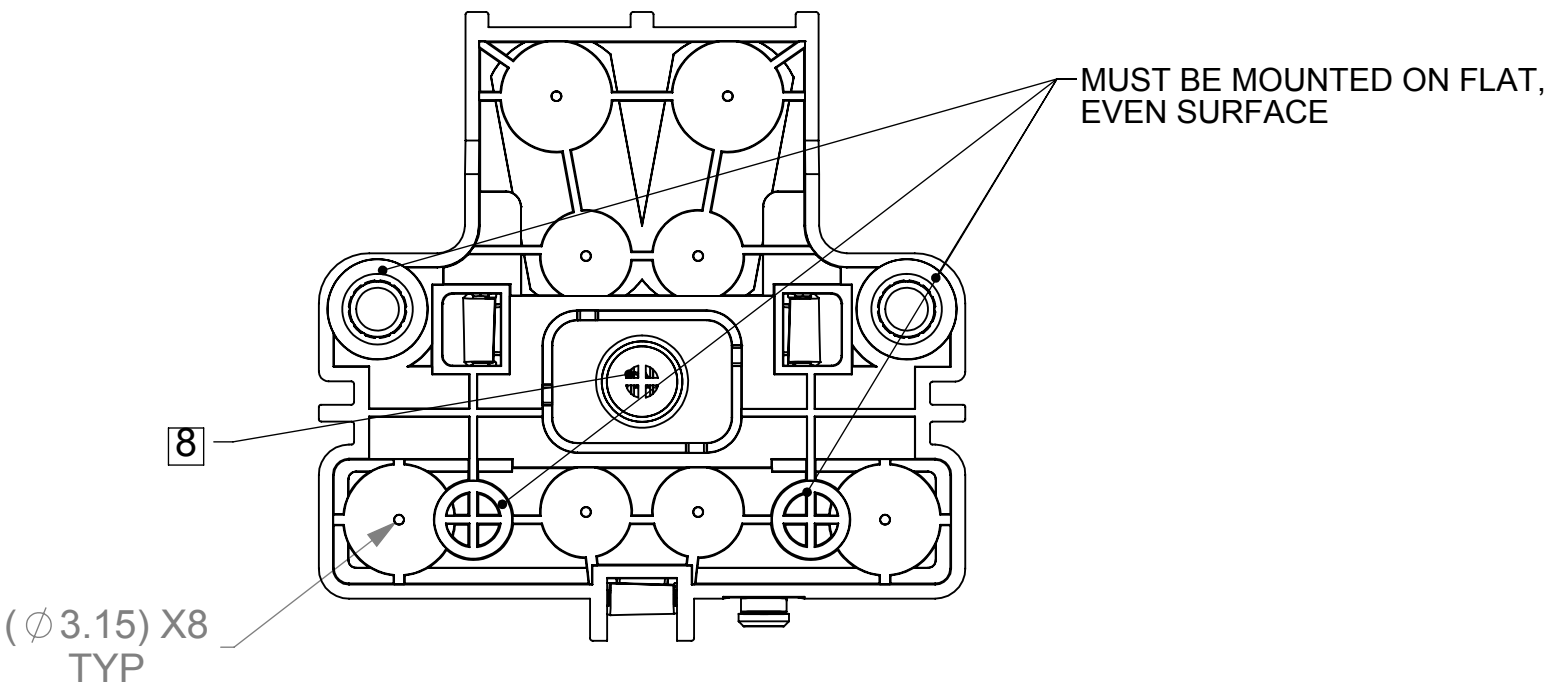
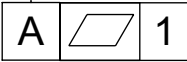
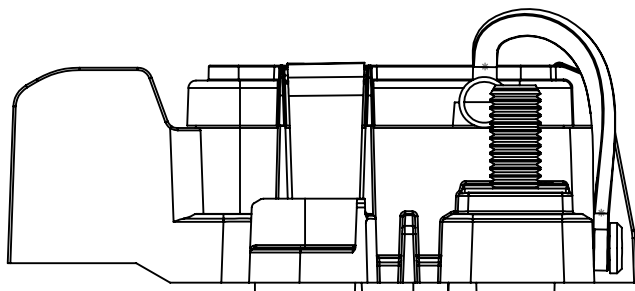
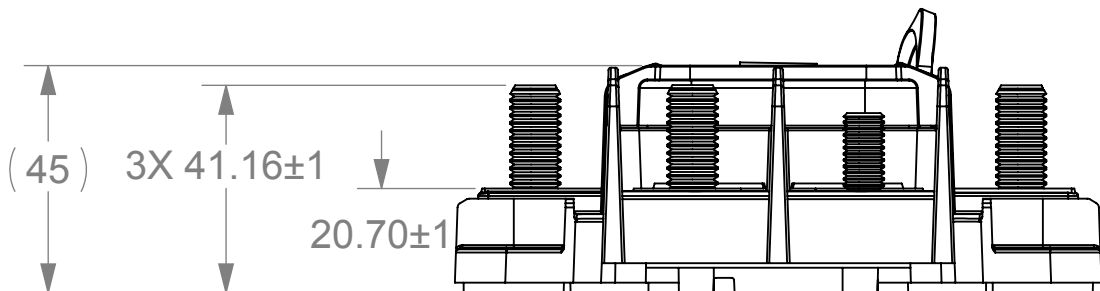
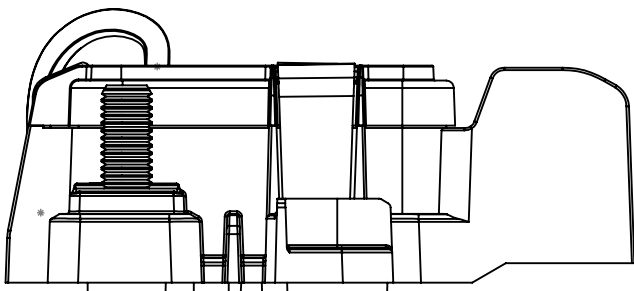
1. ALL STUDS TO BE STAINLESS STEEL WITH ROLLED THREADS
2. ALL BUS BARS TO BE TIN PLATED COPPER
3. WEIGHT EST 350 grams
4. RECOMMENDED TORQUE VALUES:
  1. MEGA FUSES - 15 N-m  $\pm$ 1.36 (11 ft-lb  $\pm$ 1)
  2. TERMINALS - 28.5 N-m  $\pm$ 1.36 (21 ft-lb  $\pm$ 1)
7. RECOMMENDED HARDWARE (TO BE INSTALLED AT LESS THAN 300 RPM);
  1. M10x1.50 18-8 STAINLESS STEEL
  2. M8x1.25 18-8 STAINLESS STEEL
8. LOCATION OF GORE VENT
9. MATERIAL:  
HOUSING: GLASS FILLED NYLON 94V-0 COVER: GLASS FILLED PC 94V-0
10. MIN/MAX TEMPERATURE RATING: OPERATIONAL: -50C~105C NON-OPERATIONAL: -55C~125C
11. MAX CURRENT INPUT: 600 AMPS
12. MAX ASSEMBLY TORQUE (PRODUCT TO MOUNTING SURFACE): 30 N-m

REVISIONS			
ZONE	REV.	DESCRIPTION	DATE
	A	PER EC#515478: INITIAL RELEASE	2/19/2016
			J. LIU



INSIDE FUSE COVER


FUSE COVER REMOVED



DIMENSIONS ARE IN MM.  
DIMENSIONS AND TOLERANCES  
ARE DEFINED ACCORDING TO  
ANSI / ASME Y14.5M-1994  
THIS DRAWING AND THE  
INFORMATION CONTAINED WITHIN  
IT ARE CONFIDENTIAL AND MAY  
NOT BE COPIED OR DISCLOSED  
WITHOUT THE WRITTEN  
PERMISSION OF LITTELFUSE.

	NAME	DATE
DRAWN	J. LIU	2/19/2016
CHECKED	-	-
-	-	-
-	-	-
-	-	-

THIRD ANGLE PROJECTION



The diagram illustrates the third angle projection of a truncated cone. On the left is the end view, represented by a circle with concentric circles and a central cross. On the right is the front view, represented by a trapezoid with a horizontal centerline. The two views are aligned horizontally.

805 W. Orchard Dr., Ste. 6, Bellingham, WA 98225 Phone (360)738-9010 Fax (360)738-0372	
PDM 2 Position - Market	
SIZE C	DWG. NO. OL-880195400
SCALE 2:3	REV. A