

# SPFR SERIES AND SPFRHV SERIES

## SPFR 1000 VDC Solar Fuse



### Description

The SPFR series was designed to meet the growing needs of the solar industry with higher amperage and voltage requirements. It was developed specifically for solar applications, ranging from 250 A to 400 A.

### Applications

- Solar Inverters
- High-amperage combiner boxes

### Features/Benefits

- DC Voltage rating meets European system requirements and North American utility scale requirements
- Multiple amperage ratings
- UL Class H Dimensions
- Full Range Protection

### Specifications

<b>Voltage Rating:</b>	1000 VDC
<b>Ampere Rating:</b>	250, 300, 350, 400
<b>Interrupting Rating:</b>	10,000 A; Time Constant less than 1 ms
<b>Fuse Type:</b>	Fast-acting
<b>Approvals:</b>	UL 248 Recognized (File: 71611) CSA Certified (File: 29862)

### Ordering Information

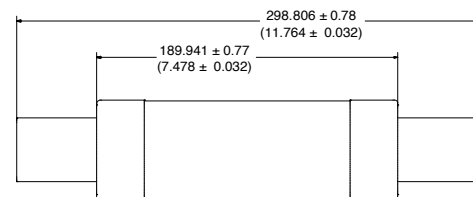
AMPERAGE	PART NUMBER	ORDERING NUMBER
250	SPFR 250	SPFR250.X
300	SPFR 300	SPFR300.X
350	SPFR 350	SPFR350.X
400	SPFR 400	SPFR400.X

### Web Resources

Downloadable CAD drawings and other technical information:

[Littelfuse.com/spfr](http://Littelfuse.com/spfr)

### Dimensions mm (inches)



## SPFRHV 1000 VDC Fuse Block



### Description

The Littelfuse SPFRHV fuse block is designed to hold Littelfuse high amperage (250-400 A) SPFR fuses.

### Specifications

<b>Voltage Rating:</b>	1000 VDC
<b>Ampere Rating:</b>	250 - 400 A
<b>Approvals:</b>	UL 4248 Recognized (File: E14721) CSA (File: 29862)
<b>Environmental:</b>	RoHS Compliant

### Ordering Information

ORDERING NUMBER	AMPERAGE
SPFRHV4001ST	250 – 400

### Web Resources

Downloadable CAD drawings and other technical information:

[Littelfuse.com/spfrhv](http://Littelfuse.com/spfrhv)

### Dimensions mm (inches)

