

Solar (PV) Application Products

1500 V Dc Solar Fuse Products

SPXC Series Fuses

- 1500 V dc • 1–4 A
- 10 x 57 mm
- UL 248-19 Listed
- Meets IEC 60269-6*
- Up to 50,000 A interrupting
- Ferrule or PCB mount available
- Application: string inverters



SPXV Series Fuses

- 1500 V dc • 1–60 A
- UL 248-19 Listed
- TUV - IEC 60269-6
- Applications: inverters and combiner boxes
- SPXVS silver-plated series available



SPXI In-line Series Fuses

- 1500 V dc • 1–60 A
- UL 248-19 Listed
- TUV - IEC 60269-6*
- Accommodates large wire range
- No fuse holder required
- Application: PV wire harness (eliminate combiner boxes)



SPNH Series Fuses

- 1500 V dc • 50–400 A
- UL 248-19 Listed
- Meets IEC 60269-6
- Bolted directly onto busbar or inserted into fuse blocks
- Applications: inverters and re-combiners



LFVX15 Series Fuse Block & Cover

- Dead-front cover for protection
- Ventilated design keeps fuse cool
- Easy fuse removal, no tools required
- 35 mm DIN-rail mountable
- Holds 20 x 127 mm 35–60 A SPXV fuses



LFPXV Series - Touch-Safe Holders

- Finger-safe design
- No fuse pullers or tools required
- 35 mm DIN-rail mountable
- Holds 10 x 85 mm SPXV/SPXVS fuses



1000 V Dc Solar Fuse Products

SPFI In-line Series Fuses

- 1000 V dc • 2–30 A
- UL 248-19 Recognized
- TUV - IEC 60269-6*
- No fuse holder required
- Application: PV wire harness (eliminate combiner boxes)



SPF Series Fuses

- 1000 V dc • 1–30 A
- UL 248-19 Listed
- TUV - IEC 60269-6
- Ferrule or PCB mount available
- Applications: combiner boxes, inverters, and battery charge controllers



LPHV Series Fuse Holders

- Touch-safe design offers protection
- 35 mm DIN-rail mountable
- Designed to hold SPF 1000 V dc fuses



SPFJ Series Fuses

- 1000 V dc • 70–450 A
- Listed to UL 248-19 (PV) and UL 248-8 (Class J)
- Meets IEC 60269-6*
- Compact footprint reduces panel size
- Applications: re-combiner boxes and inverters



LFJ1000 Series Fuse Blocks

- 1000 V dc fuse block
- UL 4248-18 Listed
- Available in clip or stud configurations
- Designed to hold SPFJ fuses



High-Speed Protection

PSR High-Speed Series Fuses

- 550–1300 V ac and 500–1000 V dc
- 40 A–2000 A
- UL 248-13 Recognized
- Meets IEC 60269-4
- Optional remote indication micro-switch available
- Application: dc couple PV-BESS central inverters



PSX Series High-Speed Square Body Fuses

- 1500 V dc • 80–1400 A
- Dc breaking capacity up to 250 kA at 1500 V dc
- UL248-13 Recognized
- Meets IEC 60269-4
- Optional remote indication micro-switch available
- Application: hybrid PV-BESS inverters



Switch Products

Dc Disconnect Switches

- 1000 and 1500 V • 200, 320, 400 and 500 A
- Design eliminates need for external bridging links (jumpers) to lower heat dissipation and save installation time
- Applications: combiner boxes, array combiners and string inverters



Class J Fuse Disconnect Switches

- 600 V ac voltage rating
- 30 A, 60 A, 100 A and 200 A
- Breaks circuit upstream and downstream enabling the switch to handle higher voltages and provide a longer switch life
- Small footprint saves space and provides design flexibility
- Applications: Auxiliary Services Transformer (SST) in central inverter and string inverter



*Meets electrical performance requirements

Solar (PV) Application Products

Ground Fault Protection

SE-601 Series Ground-Fault Relays

- Provides sensitive ground-fault protection for ungrounded systems
- Application: central inverters



EL731 Series Earth Leakage Relays

- Provides sensitive earth-leakage protection for grounded systems
- Application: central inverters



600 V Dc Solar Products

IDSR Series Indicator® Fuses KDKD Series 10 x 38 (Midget) Fuses

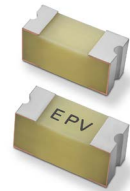
- 600 V ac/dc
- KDKD UL 248-19 Listed
- Applications: combiner boxes, inverters, battery chargers and high amp power distribution
- Negative terminal combination blocks available



100 V Dc and Below Solar Products

400PV Series – 2410 Photovoltaic Fuse

- 86 V dc • .375 A
- Recognized to UL/CSA 248-1 and UL/CSA 248-19
- Wide temperature operating range
- 2410 size; surface mountable
- Applications: photovoltaic shingles and cells



Overvoltage Protection

SPD2 PV Series Surge Protective Devices (SPDs)

- 1100 and 1500 V dc in 3+0 configuration
- Protects equipment from transient overvoltage
- Applications: combiner boxes and inverters



For more information on all surge protective devices visit Littelfuse.com/SPD

Arc-Flash Protection

AF0025 & PGR-8800 Arc-Flash Detection Relays

- Reduces arc-fault damage
- Applications: combiner boxes and central inverters



Solar Applications

- A Central Inverter**
600 V to 1500 V Fuses
Power Distribution Blocks
Dc Earth Leakage/Ground-Fault Relays
Varistor Products
Surge Protective Devices
1000 V to 1500 V High-Speed Semiconductor Fuses
Temperature Sensors
Arc-Flash Relays
Class J Fuse Disconnect Switches

- B Small Inverter**
TVS Diodes/SCRs
Varistor Products
Temperature Sensors

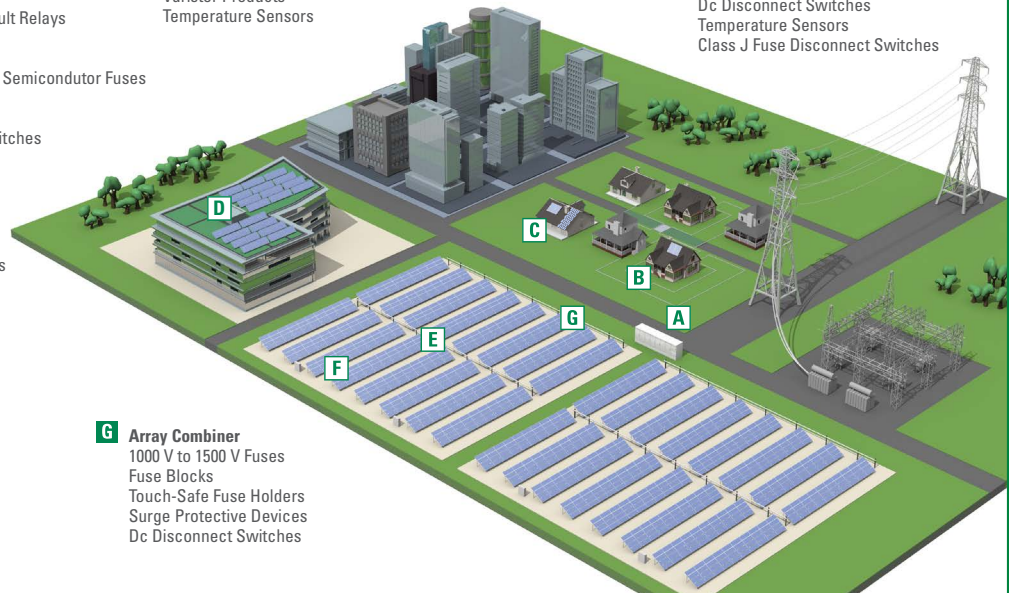
- C Micro Inverter & Solar Shingles**
TVS Diodes/SCRs
Varistor Products
Temperature Sensors
86 V Surface-Mount Fuse

- D String Inverter**
600 V to 1000 V Fuses
Touch-Safe Fuse Holders
Power Distribution Blocks
Varistor Products
Surge Protective Devices
Dc Disconnect Switches
Temperature Sensors
Class J Fuse Disconnect Switches

- E Wiring Harness**
1000 V to 1500 V In-Line Fuses

- F Combiner Box**
1000 V to 1500 V Fuses
Touch-Safe Fuse Holders
Power Distribution Blocks
Surge Protective Devices
Dc Disconnect Switches
Arc-Flash Relays

- G Array Combiner**
1000 V to 1500 V Fuses
Fuse Blocks
Touch-Safe Fuse Holders
Surge Protective Devices
Dc Disconnect Switches



With over 60 million devices installed in photovoltaic power systems, Littelfuse understands the global challenges of the solar market. We offer numerous circuit-protection products that are uniquely suited to protect the equipment and systems subject to the harsh environments of standard photovoltaic installations. For more information, visit Littelfuse.com/Solar

Disclaimer Notice – Information furnished is believed to be accurate and reliable. However, users should independently evaluate the suitability of and test each product selected for their own applications. Littelfuse products are not designed for, and may not be used in, all applications. Read complete Disclaimer Notice at www.littelfuse.com/product-disclaimer.