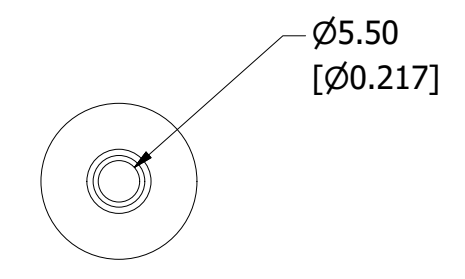
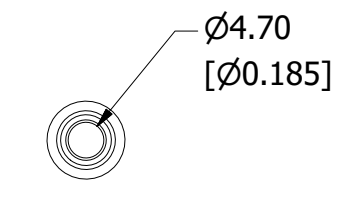
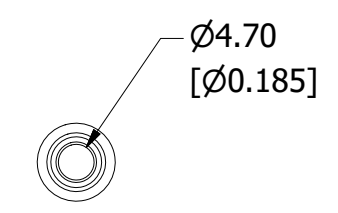
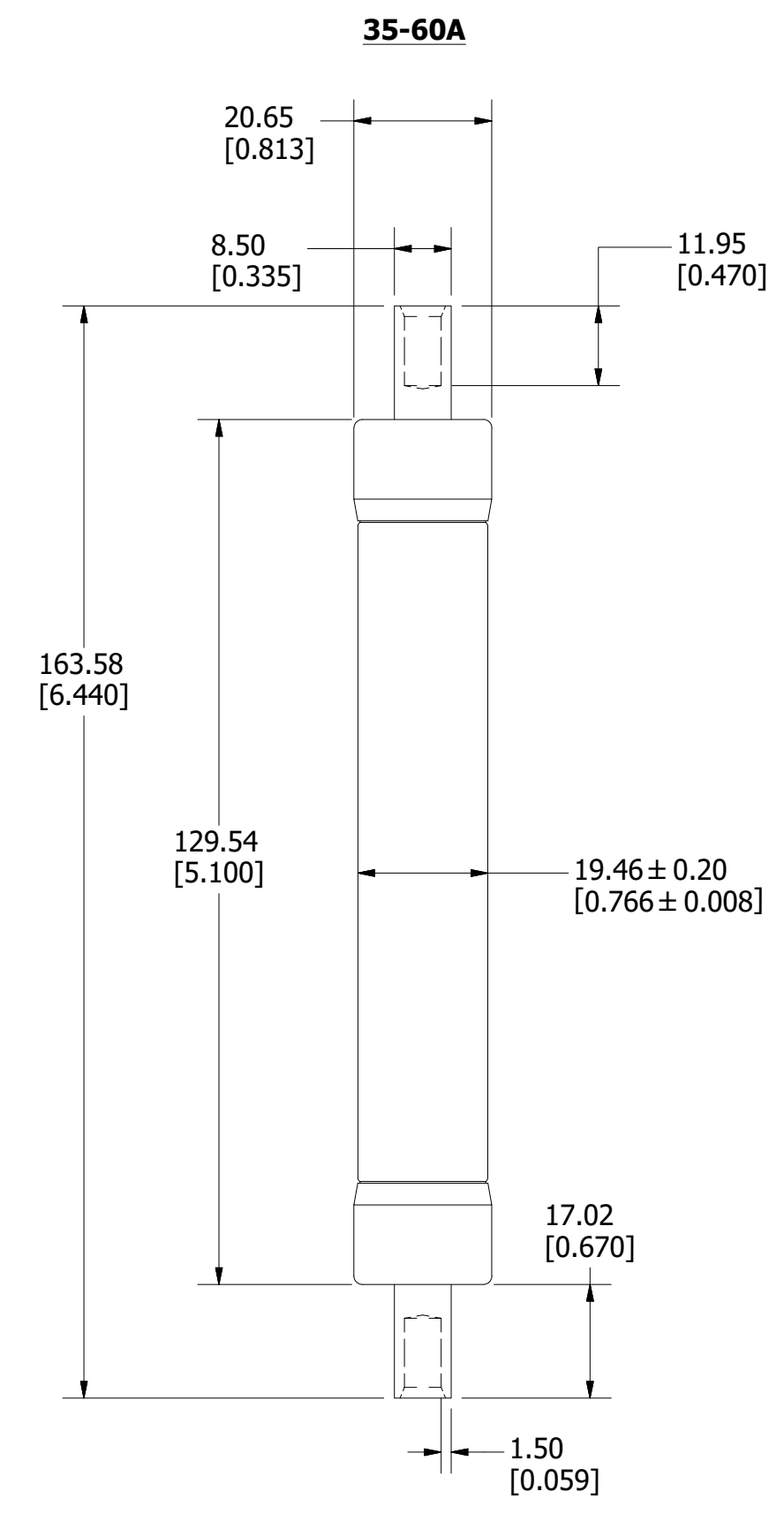
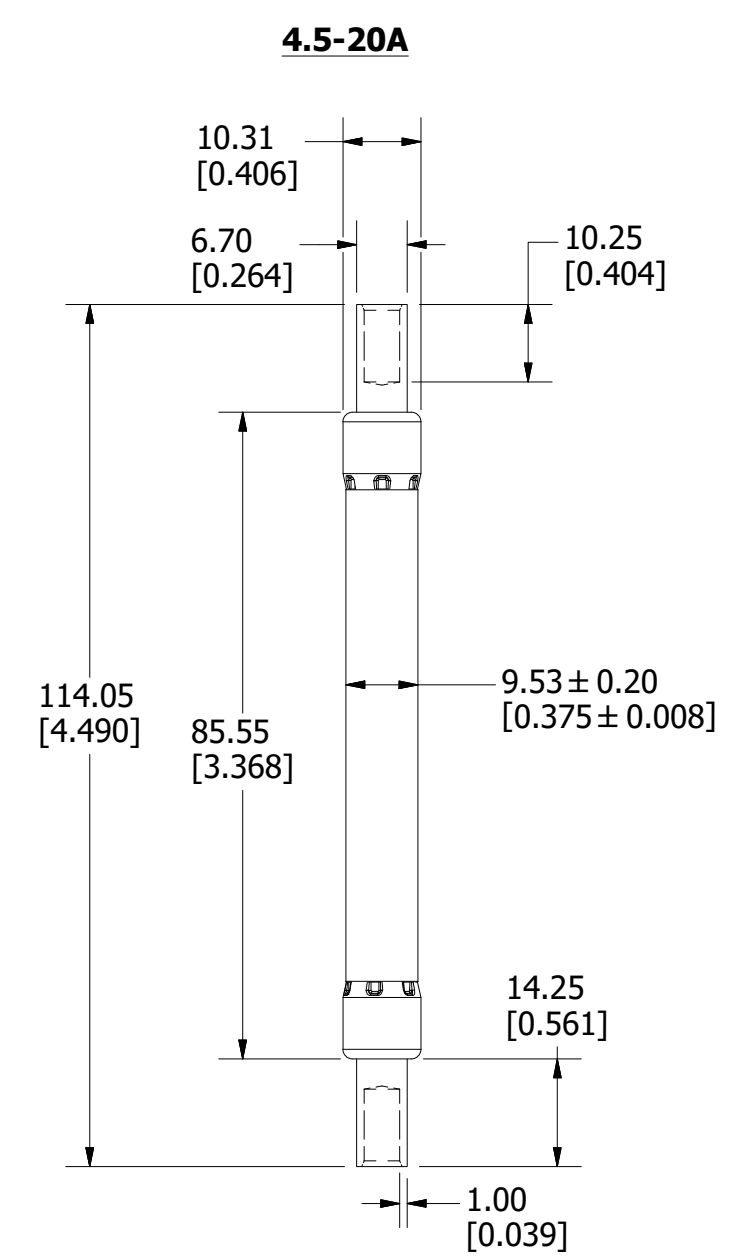
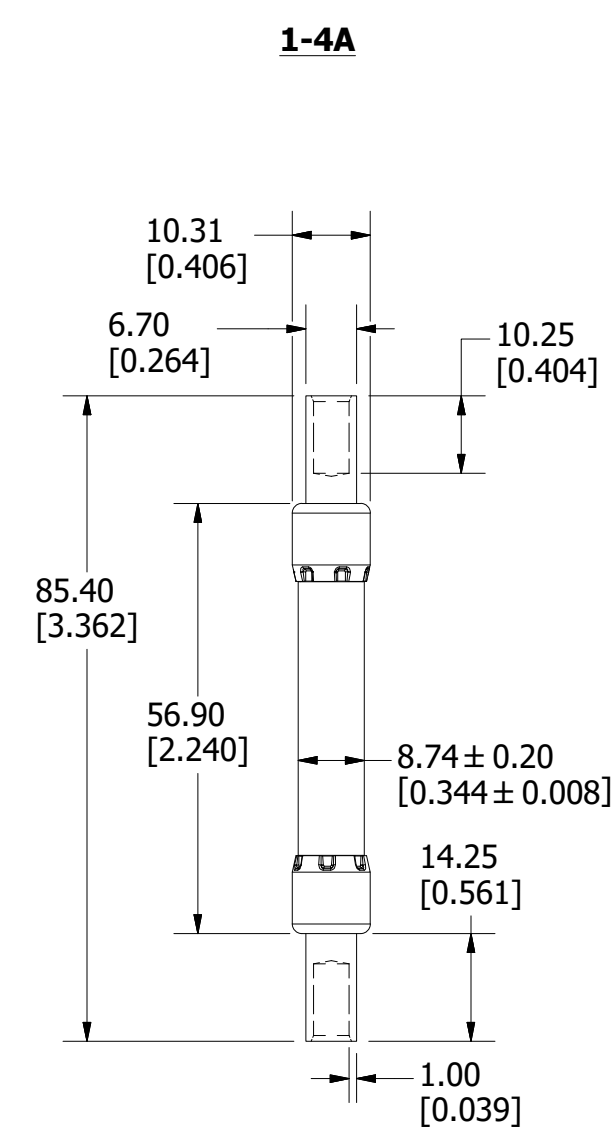


| REVISION |          | DESCRIPTION   |
|----------|----------|---|
| REV      | DATE     |   |
| A        | 11/12/18 | 520094GCP - RELEASE MRY                             |
| B        | 9/16/19  | 521247ECP/D - ADD 35-60A MRY                        |
| C        | 6/9/20   | 522410ECP/D - CHG HEADER TO 1-4A, UPDATE NOTE 1 MRY |



**NOTE:**  
 1. FUSES 20A AND BELOW SHALL PASS THROUGH A TUBULAR GAUGE HAVING A UNIFORM HOLE OF 0.414" MAX DIAMETER.

|      |  |
|------|--|
| ●    | DENOTES CRITICAL CHARACTERISTICS.  |
| CPK  | DENOTES CPK DIMENSIONS, -MINIMUM CPK VALUE   |
| (ST) | DENOTES A CHARACTERISTIC THAT PROVIDES AN INDICATION OF PROCESS PERFORMANCE. PROCEDURE FOR MEASUREMENT AND TRACKING TO BE DEFINED IN LITTELFUSE INSPECTION INSTRUCTIONS. |
| CP   | DENOTES CP DIMENSIONS, -MINIMUM CP VALUE MUST BE WITHIN THE DIMENSIONAL LIMITATIONS SHOWN ON DRAWING AND INITIALLY LOCATED TO ALLOW FOR MAXIMUM TOOL LIFE.               |

|           |                |           |                            |
|-----------|----------------|-----------|----------------------------|
| MATL SPEC | FINISH         |           |                            |
| DRW MYORK | DATE 7/16/2018 | SCALE NTS | FINISH GOOD WT GRAMS/PIECE |

UNLESS OTHERWISE SPECIFIED, DIMENSIONS ARE IN MILLIMETERS, DIMENSIONS IN BRACKETS [ ] ARE INCHES DIMENSIONING AND DO NOT INCLUDE PLATING. TOLERANCING TO BE INTERPRETED IN ACCORDANCE WITH ANSI Y14.5M-1994

|                      |                       |
|----------------------|-----------------------|
| 3RD ANGLE PROJECTION | TITLE                 |
|                      | SPXI-B SERIES OUTLINE |