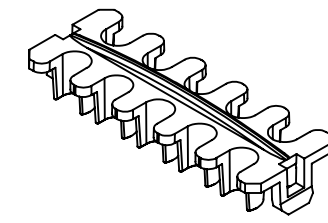
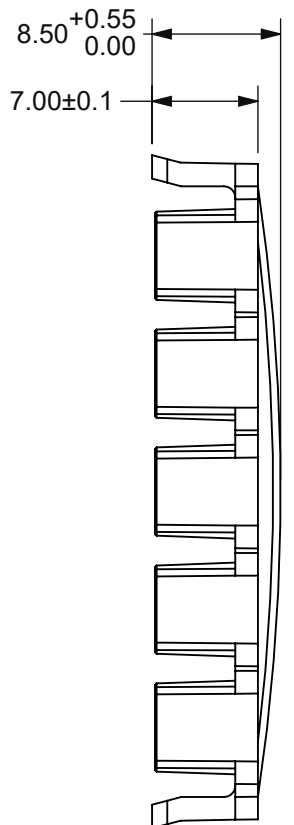
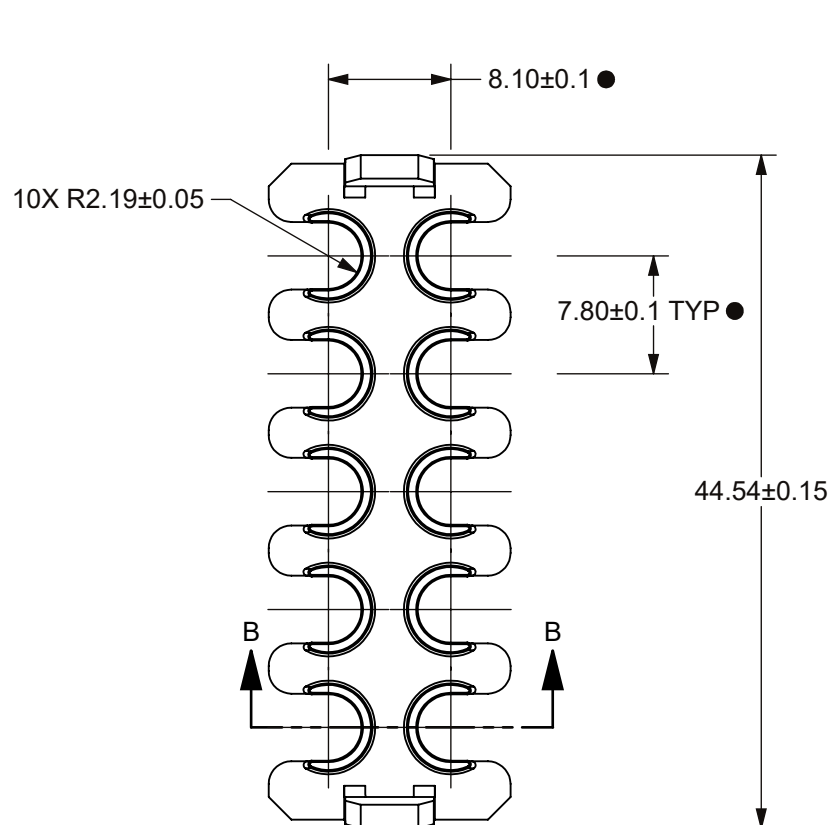
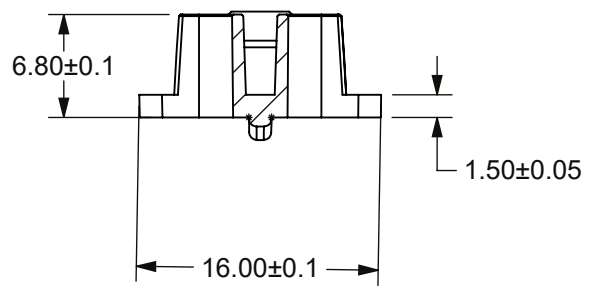


THIS DRAWING AND THE INFORMATION CONTAINED WITHIN IT ARE CONFIDENTIAL AND MAY NOT BE COPIED OR DISCLOSED WITHOUT THE WRITTEN PERMISSION OF LITTELFUSE.

REVISIONS				
ZONE	REV.	DESCRIPTION	DATE	APPROVED
	A	PCO#5300103. INITIAL RELEASE. DSILVA.	10/4/2022	L.ARGIL



SCALE 1:1



SECTION B-B

- NOTES:
- THE 3D MODEL OF THIS PART IS TO BE USED AS A REFERENCE ONLY.
  - MATERIAL: NYLON POLYAMIDE, COLOR BLUE.

NO.	COMPONENT NO.	DESCRIPTION	QTY/M	U/M
BILL OF MATERIAL				

TOLERANCES UNLESS OTHERWISE SPECIFIED (REF. ISO2768-M) FOR METAL, REF SPI PLASTICS									
.5 to 3	>3 to 6	>6 to 30	>30 to 120	>120 to 400					ANGLE
±0.10	±0.10	±0.20	±0.30	±0.50					±0.5°

DIMENSIONS ARE SHOWN IN MILLIMETERS. DIMENSIONS AND TOLERANCES ARE DEFINED ACCORDING TO ANSI/ASME Y14.5-1994.

PER CHI-NPD20-0008 PROCEDURE		FIT/ FUNCTION CRITICAL CHARACTERISTICS
		SAFETY/ COMPLIANCE CRITICAL CHARACTERISTICS SYMBOL
	CPK	DENOTES CPK DIMENSIONS MINIMUM CPK VALUE
		DENOTES A CHARACTERISTIC THAT PROVIDES AN INDICATION OF PROCESS PERFORMANCE. PROCEDURE FOR MEASUREMENT AND TRACKING TO BE DEFINED IN LITTELFUSE INSPECTION INSTRUCTIONS
	CP	DENOTES CP DIMENSIONS. -MINIMUM CP VALUE MUST BE WITHIN THE DIMENSIONAL LIMITATIONS SHOWN ON DRAWING AND INITIALLY LOCATED TO ALLOW FOR MAXIMUM TOOL LIFE

NAME	DATE	 <b>Expertise Applied   Answers Delivered</b>
DRAWN DSILVA	7/19/2022	
CHECKED -	-	
-	-	
-	-	
FORM NO: CVP-PE40-0003 REV B	TITLE	
THIRD ANGLE PROJECTION	TPA	
SIZE B	DWG. NO. OL-883-083	REV. A
DO NOT SCALE DRAWING	SCALE 2:1	SHEET 1 OF 1