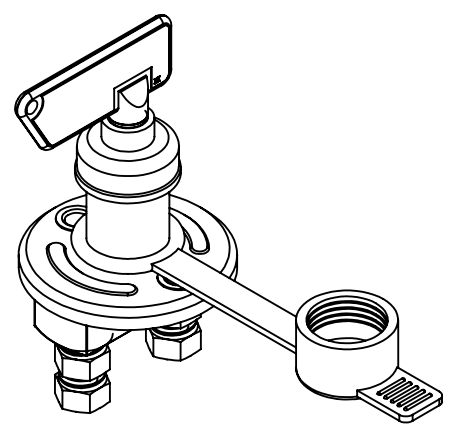
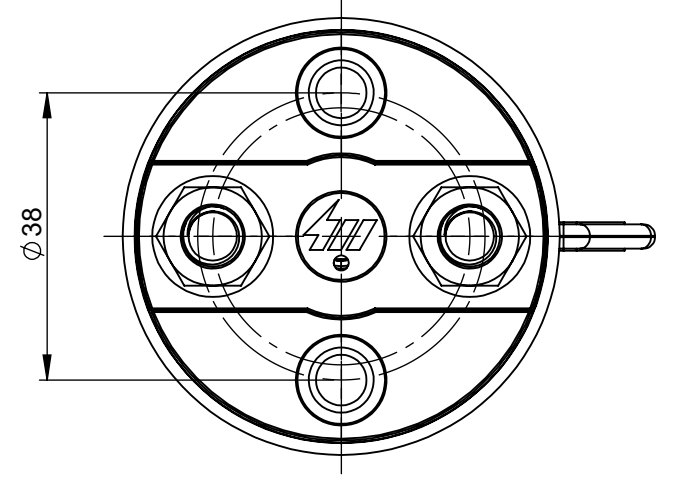
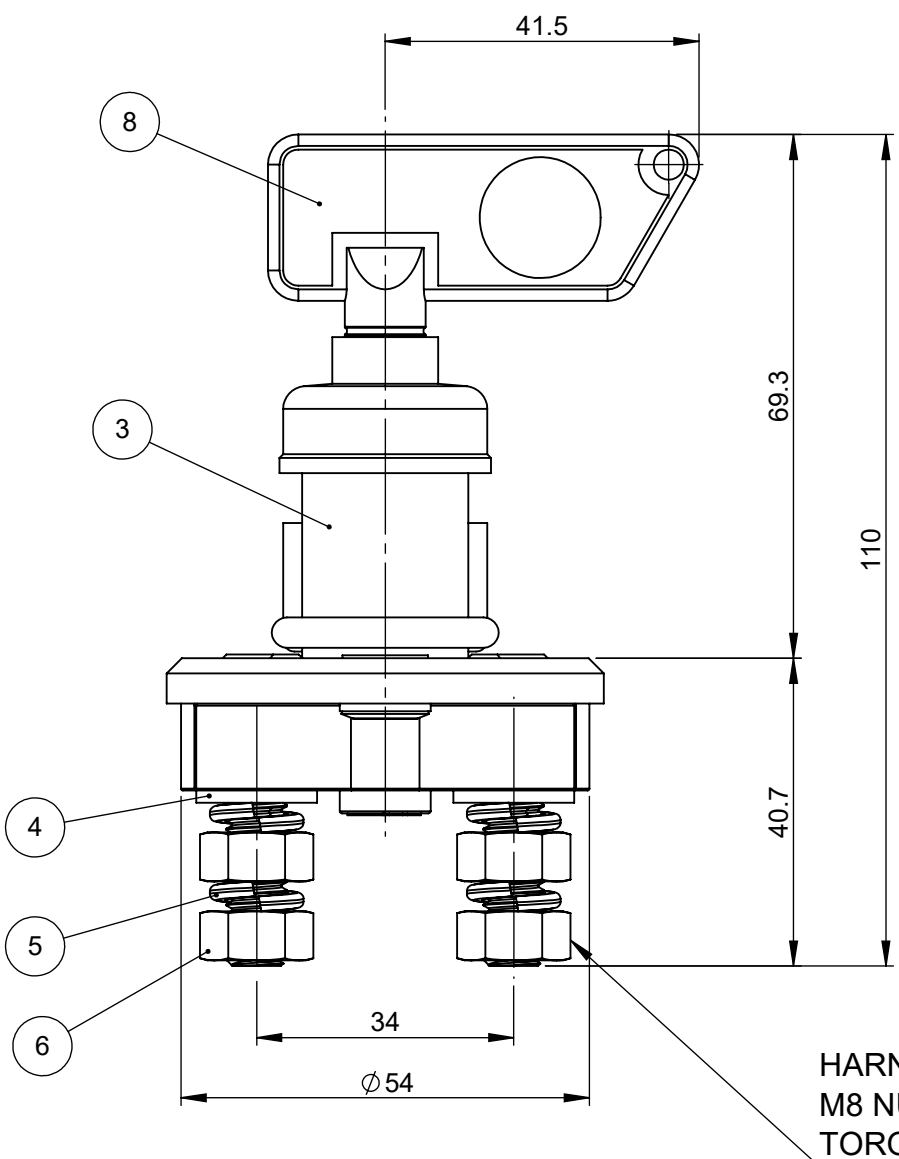


THIS DRAWING AND THE INFORMATION CONTAINED WITHIN IT ARE CONFIDENTIAL AND MAY NOT BE COPIED OR DISCLOSED WITHOUT THE WRITTEN PERMISSION OF LITTELFUSE.

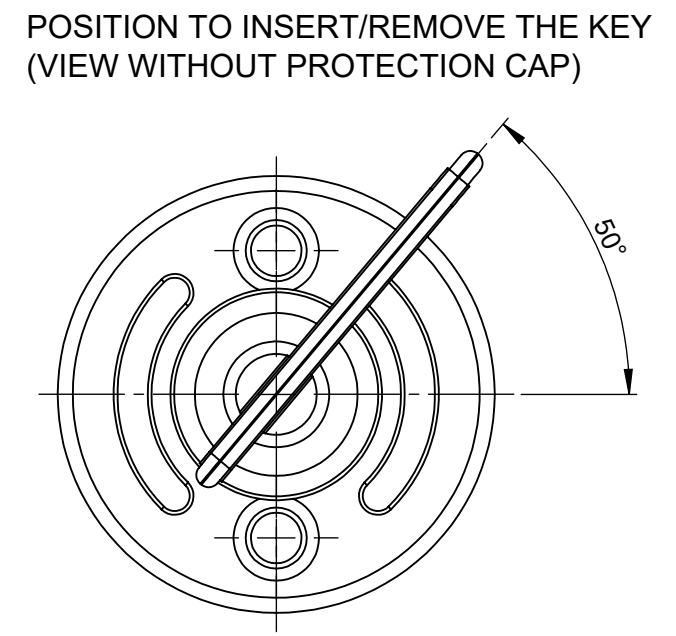
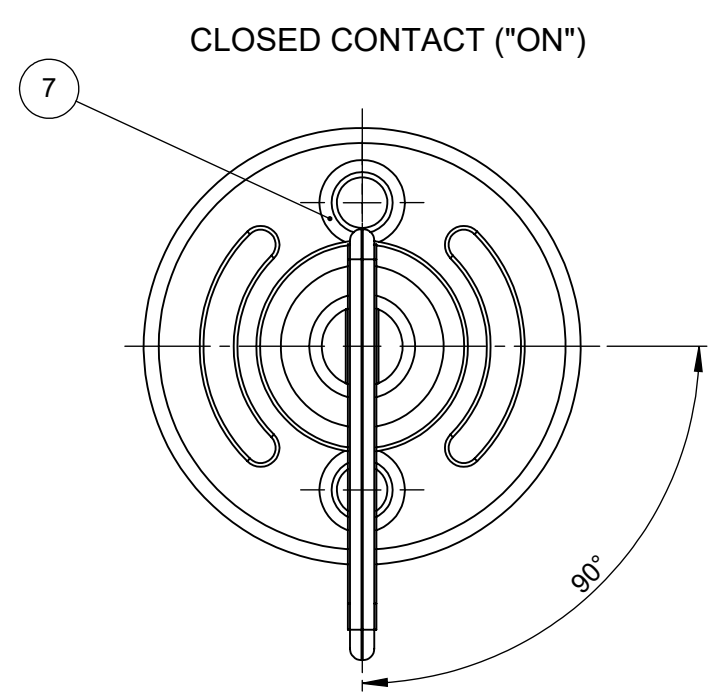
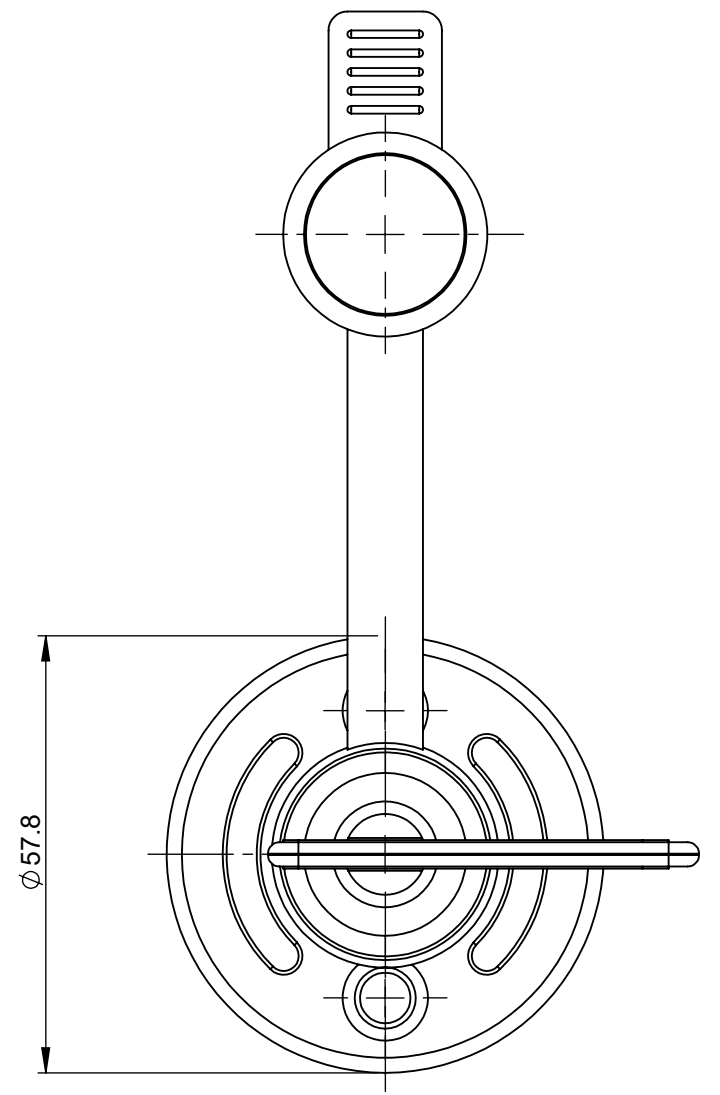
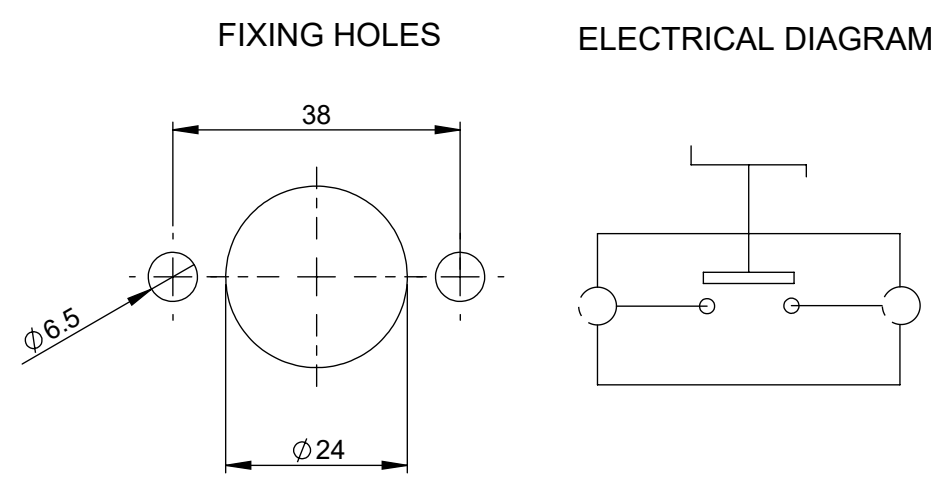
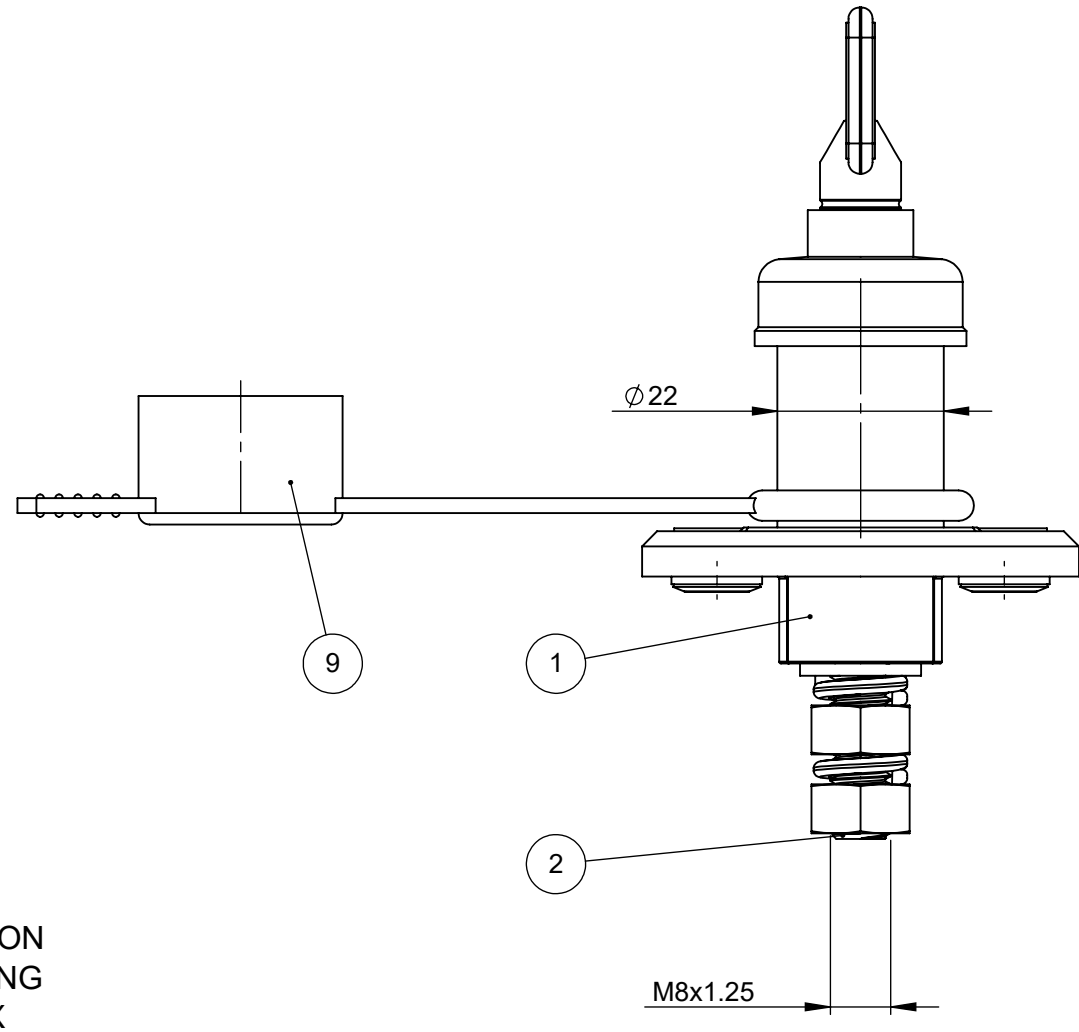
| REVISIONS | | | | |
|-----------|--------------------------------|-----------|-------------|----------|
| REV. | DESCRIPTION | DATE | DESIGNED | APPROVED |
| A | First issue of outline drawing | 29-May-20 | L.Dal Molin | M.Tinto |



SCALE 1:2



HARNESS RETENTION
M8 NUTS TIGHTENING
TORQUE: 6 Nm MAX



- FEATURES**
- Nominal voltage: 14V-28V
 - Max direct current: 100A
 - Max short time current: 500A for 5 seconds at 23±5°C
 - Number of electrical operations: 5000
 - Number of mechanical operations: 5000
 - M8 nuts tightening torque: 6±1 Nm
 - Supplying conditions: key, protection casing and cap are disassembled

ASSEMBLY KEY
To assemble the key, insert it and turn it clockwise of 50° taking the device in stated Switched OFF; to remove it, with the device in state Switched OFF turn it counterclockwise of 50° and extract it

OPERATION
-To close (switch on) the contacts: turn clockwise the key of 90°
-To open (switch off) the contacts: turn counterclockwise the key of 90°

SAP drawing number:

Material and treatments:

| POS. | P/N | DESCRIPTION | MATERIAL | Q.TY | U/M |
|------|----------|------------------------------|-----------------------------------|------|-----|
| 9 | 00603900 | Cap for Bms | Thermoplastic | 1 | EA |
| 8 | 08099900 | Key complete with cap | Polyamide,brass and thermoplastic | 1 | EA |
| 7 | | Eyelet | Iron | 2 | EA |
| 6 | | Nut M8 | Steel | 4 | EA |
| 5 | | Spring washer To 8 | Steel | 4 | EA |
| 4 | | Washer Te 8.4x16 | Steel | 2 | EA |
| 3 | | Upper body cam double | Polyamide | 1 | EA |
| 2 | | Power stud | Copper | 2 | EA |
| 1 | | Lower body cont.-holder hole | Polyamide | 1 | EA |

| NAME | | DATE |
|--|--------------|--------------|
| DRAWN | L. Dal Molin | 09-Apr-19 |
| CHECKED | - | - |
| | | |
| Expertise Applied Answers Delivered | | |
| FORM NO: CVP-PE40-0013 REV A FIRST ANGLE PROJECTION | | |
| SIZE: | DWG. NO. | OUTLINE REV. |
| A2 | OL-08099000 | A |
| DO NOT SCALE DRAWING | | |
| SCALE 1:1 | SHEET 1 OF 1 | |