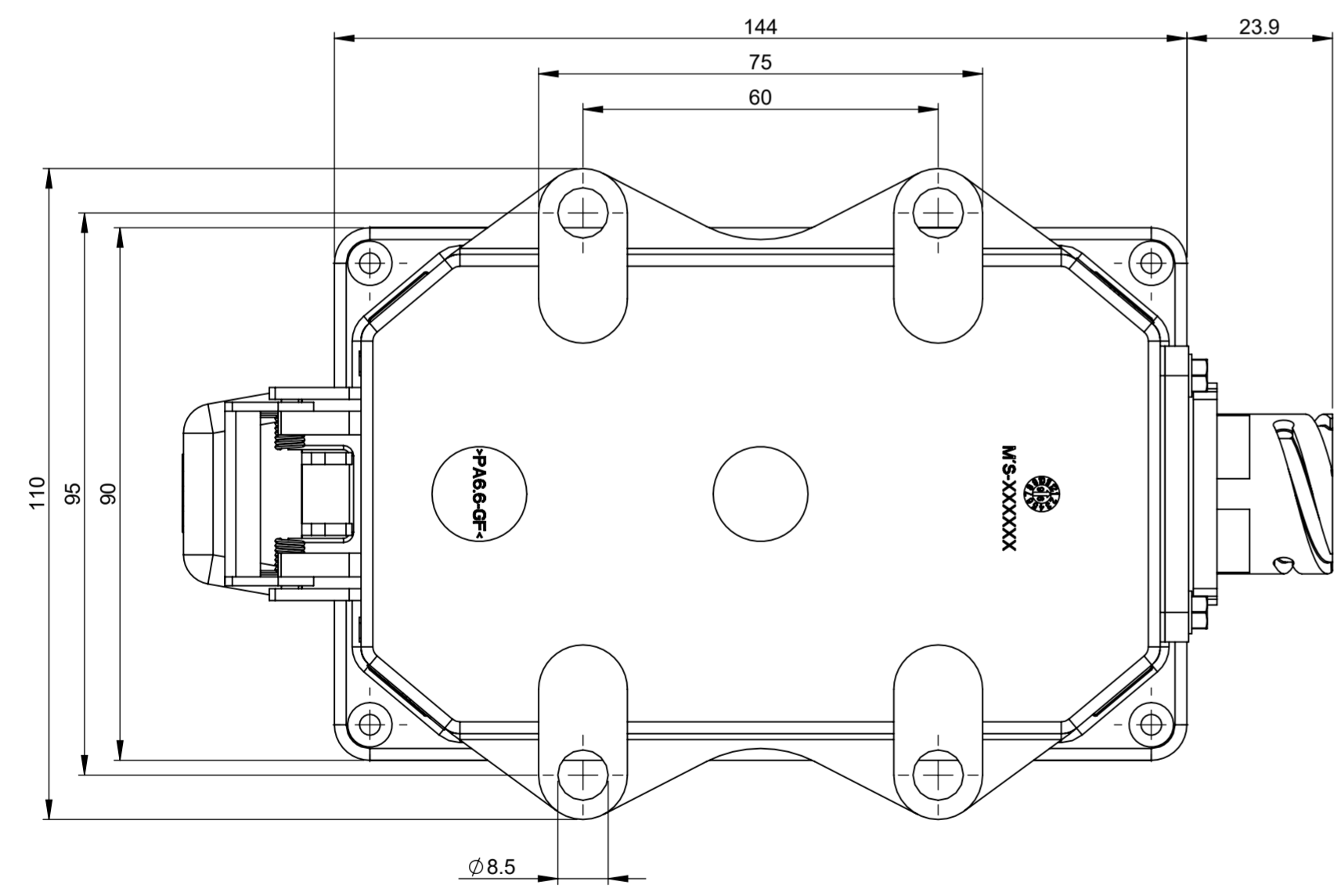
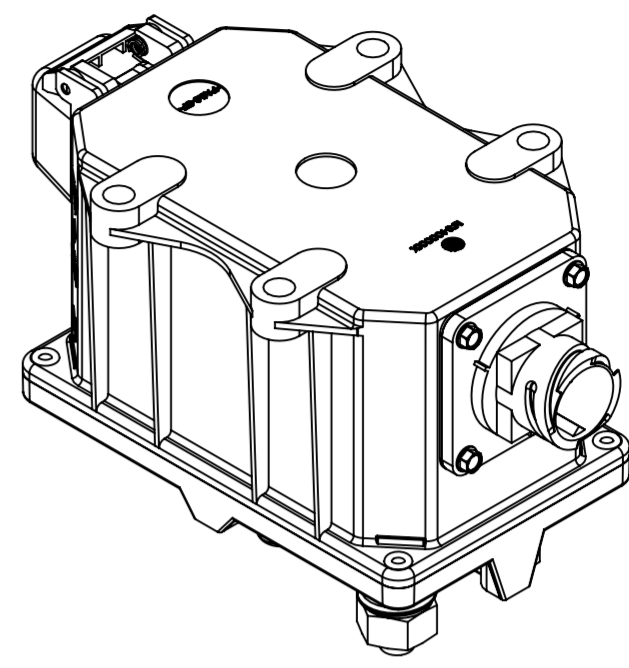
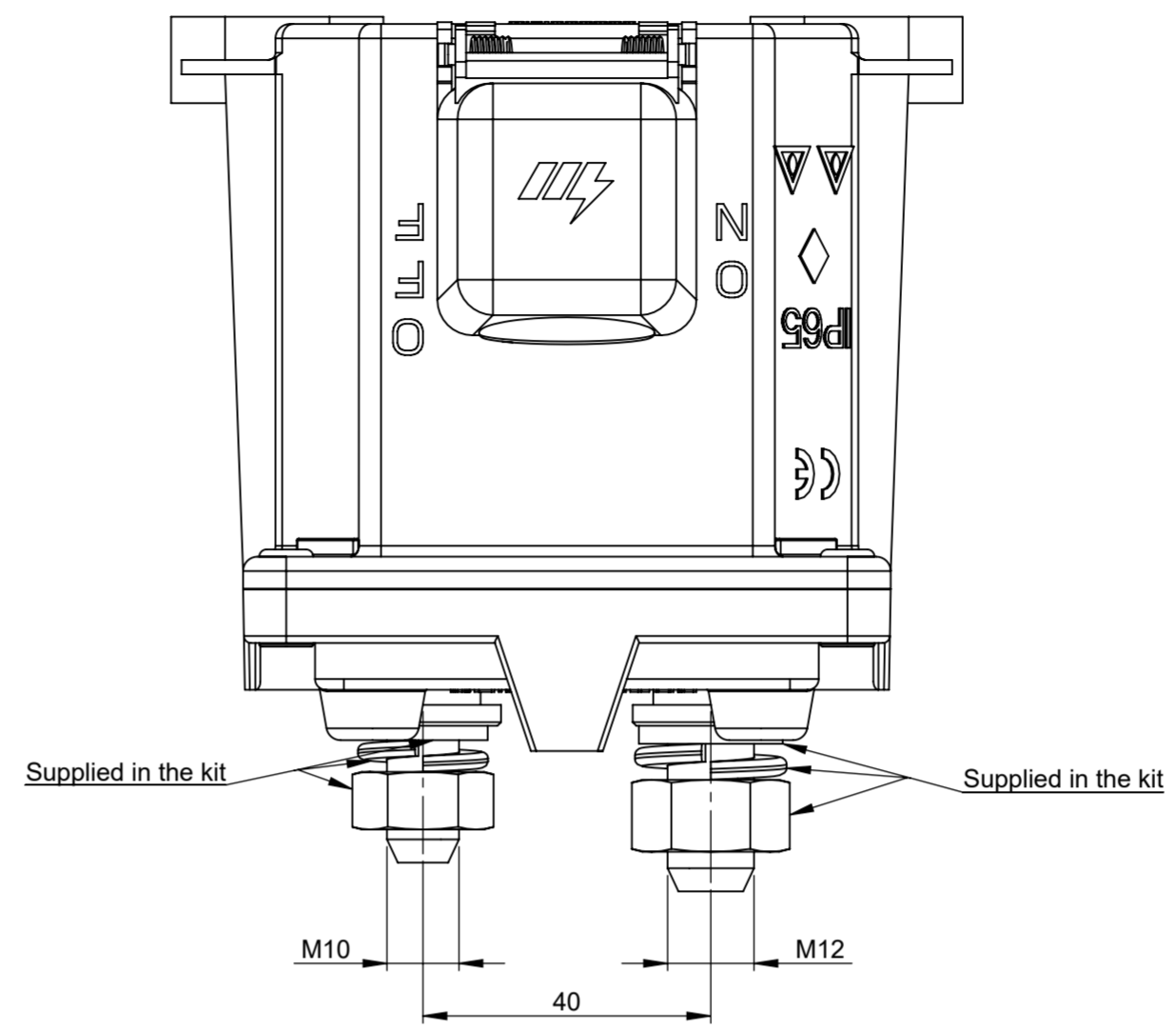
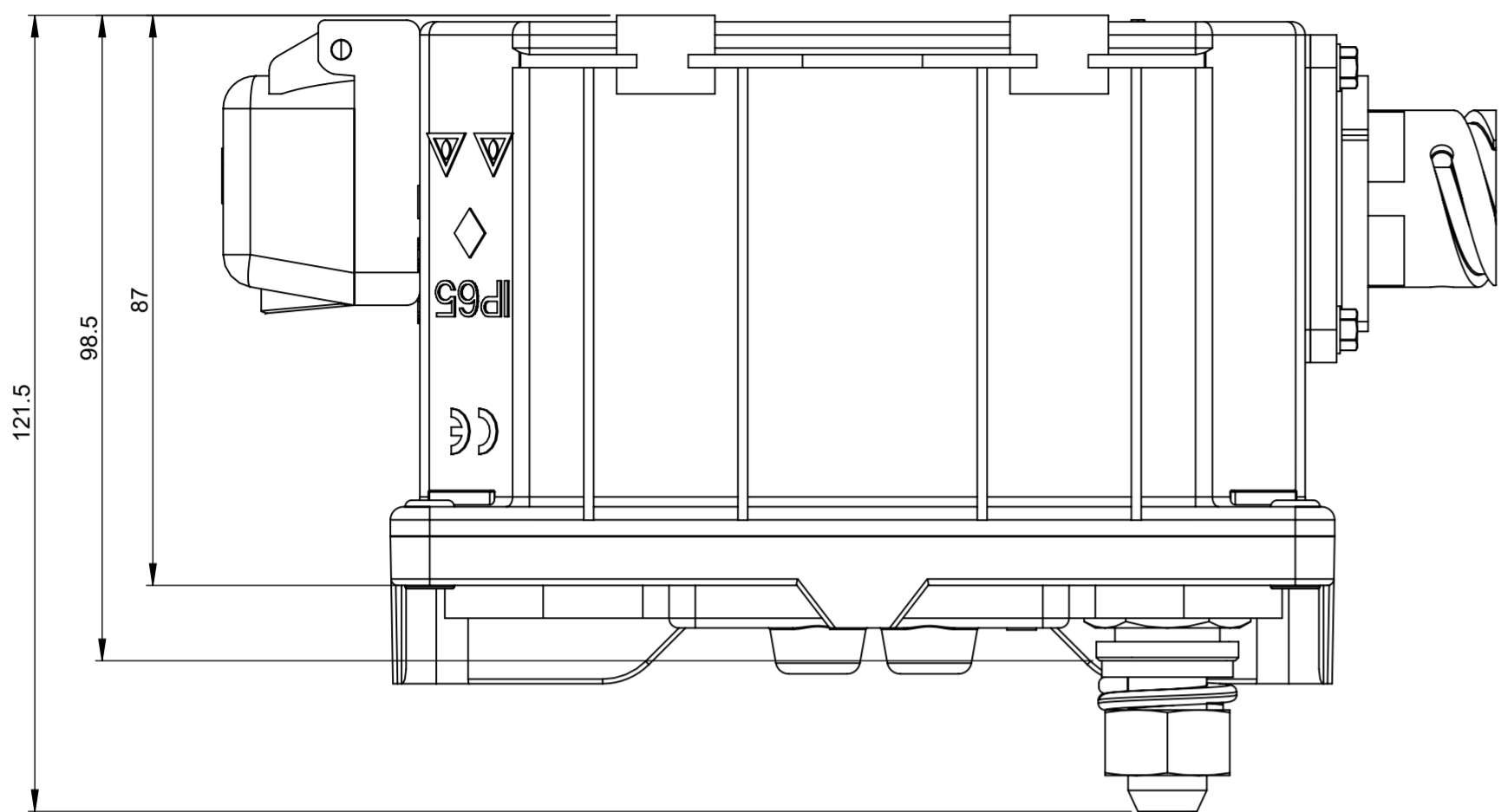
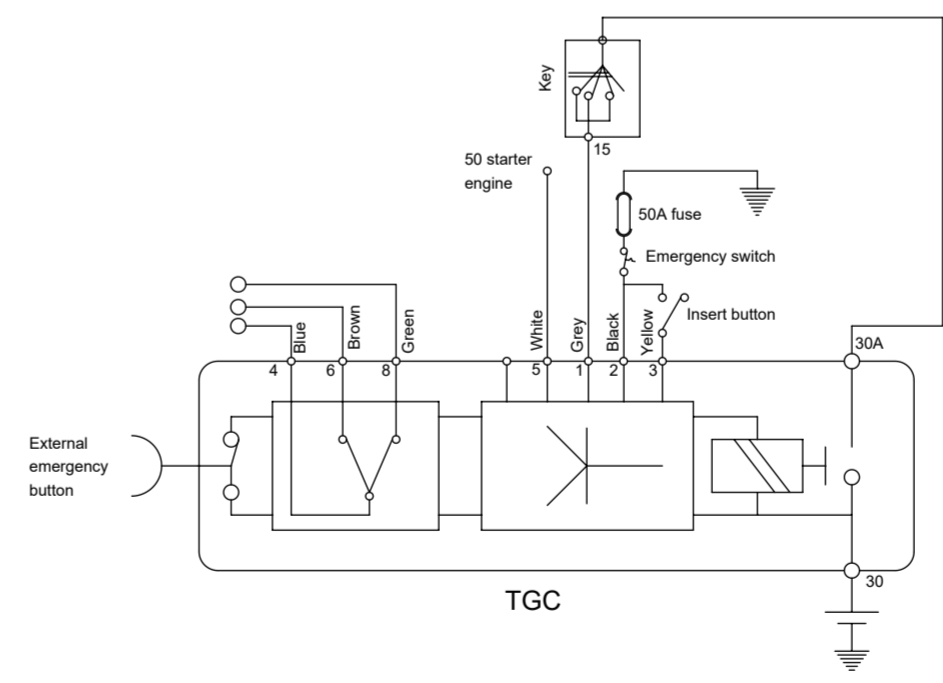


REV.	DESCRIPTION	DATE	GCF / ECR	DESIGNED	APPROVED
A	Initial Release	2 Aug 2022		L.Dal Molin	M.Tinto



ELECTRICAL DIAGRAM



REFERENCES 8 PIN SOCKET

Socket references	Function
1	15
2	Emergency negative
3	Insertion
4	Aux common
5	50
6	NC Aux
7	Not collacted
8	NO Aux

DIMENSIONS AND TOLERANCES IN MILLIMETERS, DEFINED ACCORDING TO ISO 1101-2017.

linear dimensions						
0,5	>3	>6	>30	>120	>400	>1000
3	6	30	120	400	1000	2000
±0,2	±0,3	±0,5	±0,8	±1,2	±2	±3

angle (for range of lengths)			
up to 10	>10	>50	>120
±1°30'	±1°	±0°30'	±0°15'

●	FIT/ FUNCTION CRITICAL CHARACTERISTICS SYMBOL		
<S>	SAFETY/ COMPLIANCE CRITICAL CHARACTERISTICS SYMBOL		
CPK	DENOTES CPK DIMENSIONS MINIMUM CPK VALUE		
ST	DENOTES A CHARACTERISTIC THAT PROVIDES AN INDICATION OF PROCESS PERFORMANCE. PROCEDURE FOR MEASUREMENT AND TRACKING TO BE DEFINED IN LITTELFUSE INSPECTION INSTRUCTIONS		
CP	DENOTES CP DIMENSIONS. MINIMUM CP VALUE MUST BE WITHIN THE DIMENSIONAL LIMITATIONS SHOWN ON DRAWING AND INITIALLY LOCATED TO ALLOW FOR MAXIMUM TOOL LIFE		
DRAWN	L. Dal Molin	DATE	2 Aug 2022
CHECKED	-		
FORM NO.	CVP-PE40-0013 REV A	TITLE	ELECTRICAL BMS TGC/DE-I 24V(+)
FIRST ANGLE PROJECTION		SCALE	A2
DO NOT SCALE DRAWING	SCALE 1:1	DWG. NO.	OL-08096562
		OUTLINE REV.	A
			SHEET 1 OF 1

DOCUMENTO CORRELATO AL CERTIFICATO
INERIS 03ATEX0202
 Non sono ammesse modifiche senza l' approvazione della "Persona Autorizzata".

- PRESCRIPTIONS**
- Tightening torque of M12 nut: 22 ± 1 Nm
 - Tightening torque of M10 nut: 22 ± 1 Nm
 - Work environment 4: according to Iveco Std. 18-2252
 - Fix the device to the structure by the M8 screws and plane washer with a torque of 10 ± 2 Nm.

- CHARACTERISTICS**
- Nominal voltage: 12 - 24V
 - Maximum continuous current: 250A
 - Maximum short time current: 2000A for 30 sec.
 - Number of mechanical and electrical cycles: 100.000