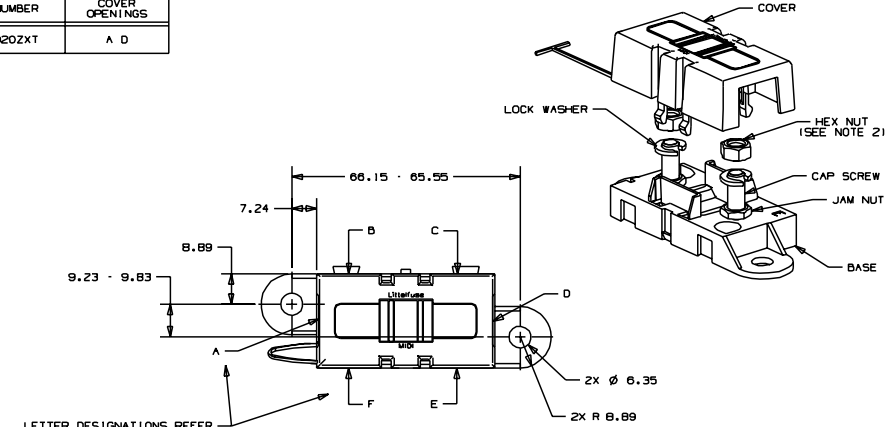
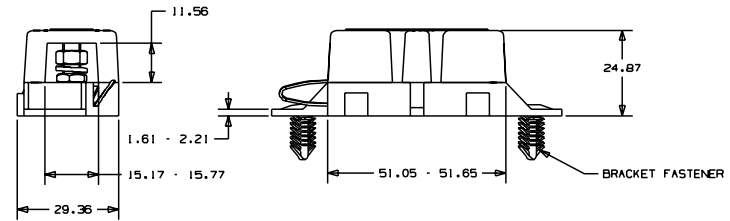


CAD GENERATED DRAWING - NO PENCIL CHANGES ALLOWED

PART NUMBER	COVER OPENINGS
04980920ZXT	A D



LETTER DESIGNATIONS REFER TO POSITIONS OF AVAILABLE COVER OPENINGS. (SEE CHART)



- NOTES:**
- TAB COVER TIE IS INSERTED INTO HOLE IN BASE.
 - TORQUE REQUIRED FOR HEX NUT TO BE 4.0 - 5.0 NEWTON METERS (35-44 IN-LBS).

NO	COMPONENT NO	DESCRIPTION	QTY/M	L/M
BILL OF MATERIAL				
COPIES TO				
1	9	FINISH		
2	10	19		
3	12	20		
4	13	21	DATE 01/12/10	SCALE 1:1
5	14	22	DATE 01/12/10	SUPER DR
6	15	23	DATE	FINISH GOOD W/T
7	16	24	DATE	TRANSPIRE
8	17	25	DATE	
TOLERANCES UNLESS OTHERWISE SPECIFIED (REF. ISO 2768-mS)				
DIMENSION 0.5 - 3" ±0.1 3" - 6" ±0.2 6" - 30" ±0.3 30" - 400" ±0.5				
TOLERANCE ±0.1 ±0.1 ±0.2 ±0.3 ±0.5				
TITLE HOLDER - M101				
REVISION DATA NO. OUTLINE				
A OL-04980920ZXT				



UNLESS OTHERWISE SPECIFIED, DIMENSIONS ARE IN MILLIMETERS. DIMENSIONS IN BRACKETS [] ARE IN INCHES.

CPK DEMOTES CRITICAL CHARACTERISTICS.

CPK DEMOTES CPK DIMENSIONS. -MINIMUM CPK VALUE

SEMOTEL X CHARACTERISTIC THAT PROVIDES AN INDICATION OF PROCESS PERFORMANCE. PROCEDURE FOR MEASUREMENT OF SEMOTEL X CHARACTERISTIC IS DESCRIBED IN THE LITELIFE INSPECTION INSTRUCTIONS.

SEMOTES CP DIMENSIONS. -MINIMUM CP VALUE MUST BE WITHIN THE DIMENSIONAL LIMITATIONS SPECIFIED IN THE LITELIFE INSPECTION INSTRUCTIONS.

CP DEMOTES CP DIMENSIONS. -MINIMUM CP VALUE MUST BE WITHIN THE DIMENSIONAL LIMITATIONS SPECIFIED IN THE LITELIFE INSPECTION INSTRUCTIONS.

