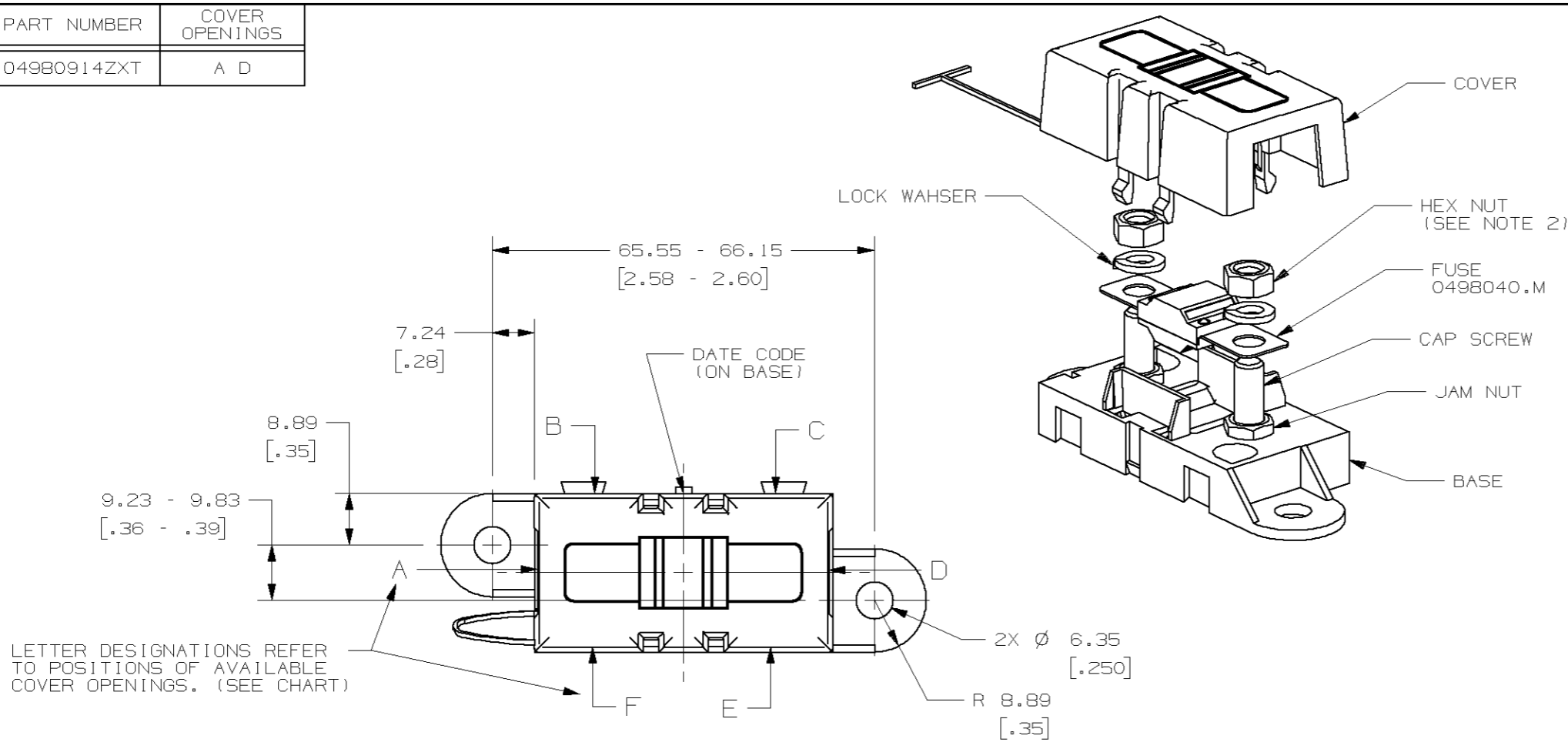
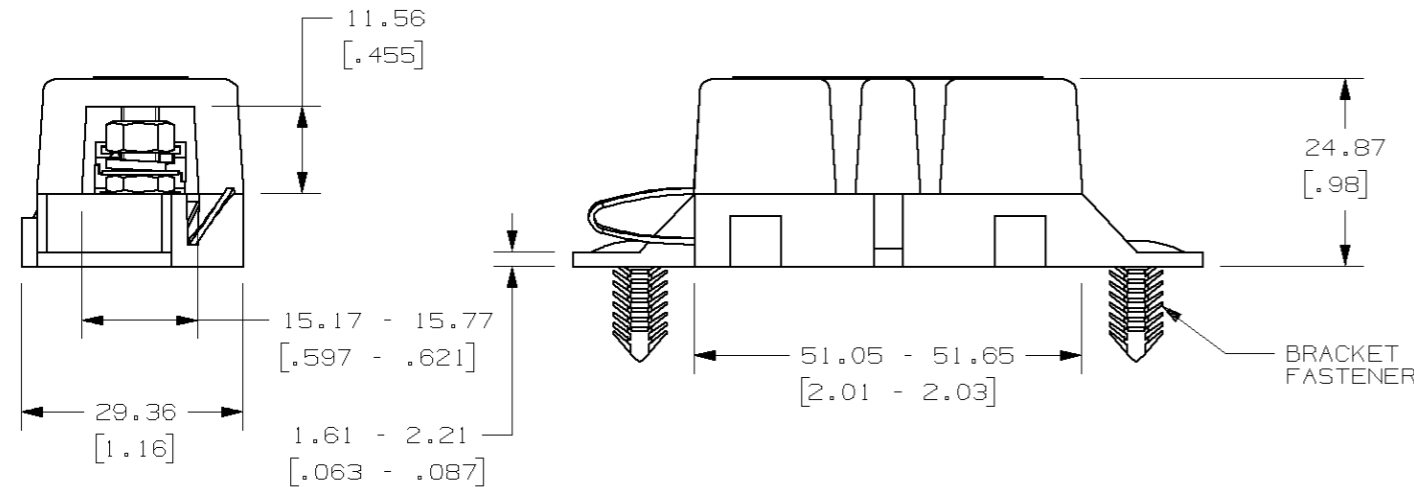


PART NUMBER	COVER OPENINGS
04980914ZXT	A D



LETTER DESIGNATIONS REFER TO POSITIONS OF AVAILABLE COVER OPENINGS. (SEE CHART)



NOTES:

- TAB OF COVER TIE IS INSERTED INTO HOLE IN BASE.
- TORQUE REQUIRED FOR HEX NUT TO BE 4.0 - 5.0 NEWTON METERS (35-44 IN-LBS).
- CAP SCREW AND NUTS - M5 X 0.8 - ANS WASHERS, STEEL, ZINC PLATE WITH TRIVALENT CHROMATE, LEACHED AND SEALED, INTEGRAL TORQUE CONTROL LUBRICANT FINISH. (MEETS 96 HR. ASTM STD. B-117 SALT SPRAY REQ.).
- HOLDER MEETS L/F VALIDATION TEST SPEC. VS-005004.

METRIC

NO		COMPONENT NO	DESCRIPTION	QTY/M	U/M
BILL OF MATERIAL					
		MATL SPEC			
		FINISH			
		DRW DJG	DATE 05/25/05	SCALE 1:1	
		CHK	DATE	SUPER DR	
		APPD	DATE	FINISH GOOD WT	GRAMS/PIECE
		COPIES TO	TOLERANCE UNLESS OTHERWISE SPECIFIED		
1	9	18	ONE PLACE DEC +/- .25		
2	10	19	THREE PLACE DEC +/- .100		
3	12	20	ANGULAR +/- 1°		
4	13	21			
5	14	23			
6	15	33			
7	16	43			
8	17	53			
		LTR	DATE	REVISION	CHK
		A	05/25/05	61735 - RELEASE	DJG
		B	06/08/07	854600-REDRAWN IN US & CONVERT TO METRIC, ADDED TOLERANCE TO DIMENSIONS, 7.24 WAS (8.19) GMB	
		TITLE			OUTLINE
		MIDI FUSE HOLDER			04980914ZXT
		W/40A FUSE INSTALLED			
		3RD ANGLE PROJECTION			
		DES PLAINES, ILLINOIS 60016			

UNLESS OTHERWISE SPECIFIED, DIMENSIONS ARE IN MILLIMETERS. DIMENSIONS IN BRACKETS [ ] ARE INCHES
UNLESS OTHERWISE SPECIFIED, DIMENSIONS DO NOT INCLUDE PLATING.
⊙ DENOTES CRITICAL CHARACTERISTICS.
CPK DENOTES CPK DIMENSIONS, -MINIMUM CPK VALUE
ST DENOTES A CHARACTERISTIC THAT PROVIDES AN INDICATION OF PROCESS PERFORMANCE. PROCEDURE FOR MEASUREMENT AND TRACKING TO BE DEFINED IN LITTELFUSE INSPECTION INSTRUCTIONS
CP DENOTES CP DIMENSIONS, -MINIMUM CP VALUE MUST BE WITHIN THE DIMENSIONAL LIMITATIONS SHOWN ON DRAWING AND INITIALLY LOCATED TO ALLOW FOR MAXIMUM TOOL LIFE