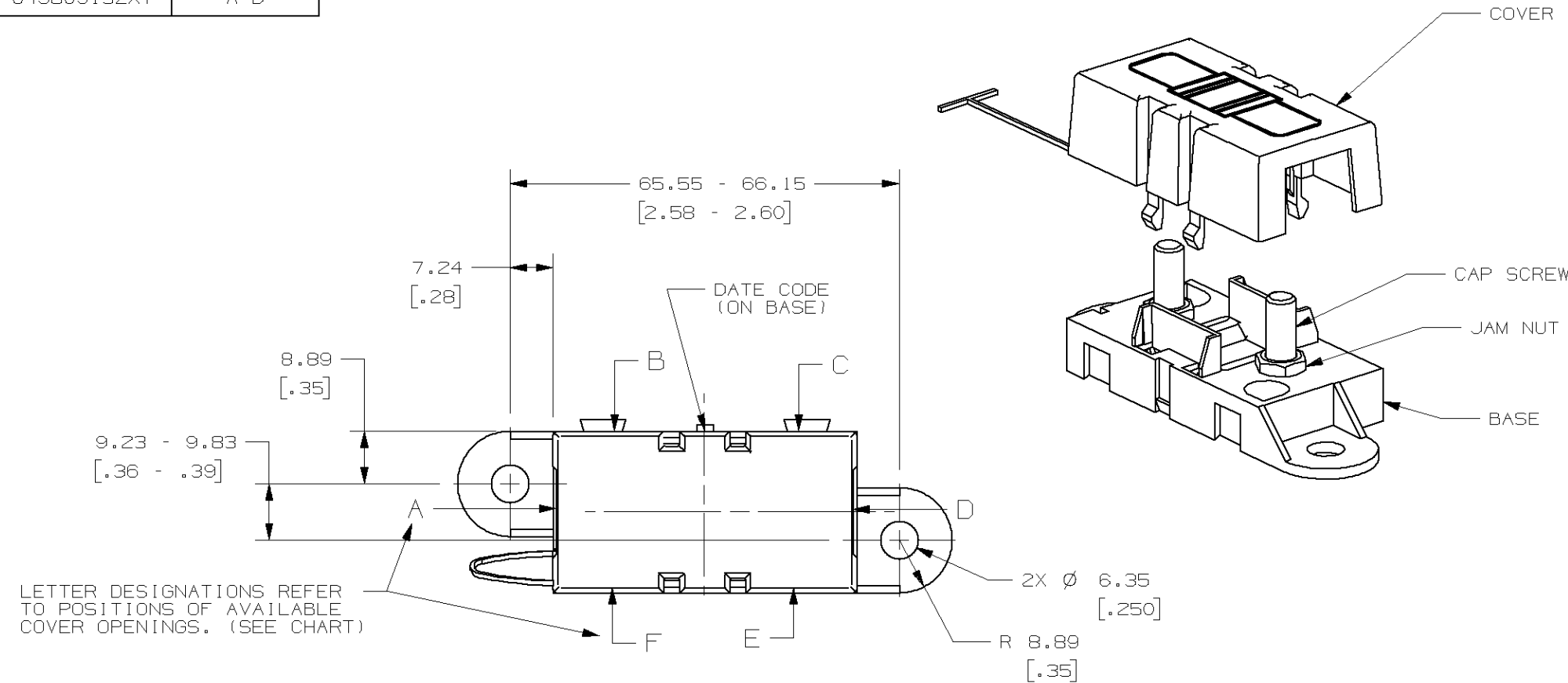
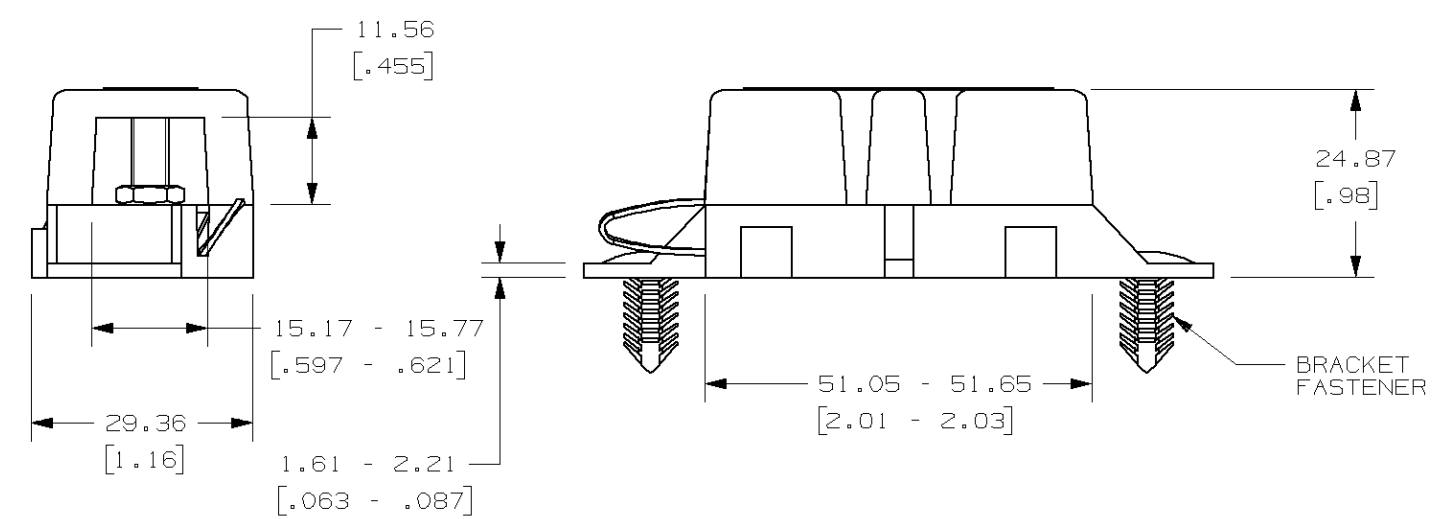


PART NUMBER	COVER OPENINGS
04980913ZXT	A D

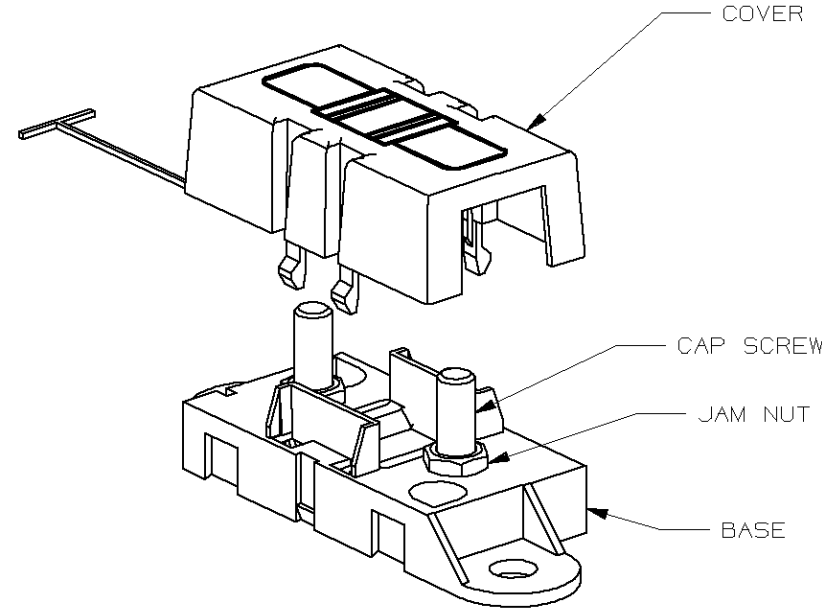


LETTER DESIGNATIONS REFER TO POSITIONS OF AVAILABLE COVER OPENINGS. (SEE CHART)



NOTES:

- TAB OF COVER TIE IS INSERTED INTO HOLE IN BASE.
- TORQUE REQUIRED FOR TOP NUT (NOT SHOWN) TO BE 4.0 - 5.0 NEWTON METERS (35-44 IN-LBS).
- CAP SCREW AND JAM NUT - M5 X 0.8 STEEL, ZINC PLATE WITH TRIVALENT CHROMATE, LEACHED AND SEALED, INTEGRAL TORQUE CONTROL LUBRICANT FINISH. (MEETS 96 HR. ASTM STD. B-117 SALT SPRAY REQ.).
- HOLDER MEETS L/F VALIDATION TEST SPEC. VS-005004.



NO	COMPONENT NO	DESCRIPTION	QTY/M	U/M
BILL OF MATERIAL				
MATERIAL SPEC				
FINISH				
COPIES TO				
1	9	18		
2	10	19		
3	12	20		
4	13	21	DATE	05/25/05
5	14	23	SCALE	1:1
6	15	33	DATE	
7	16	43	DATE	
8	17	53	DATE	
TOLERANCE UNLESS OTHERWISE SPECIFIED				
ONE PLACE DEC +/- .25				
THREE PLACE DEC +/- .100				
ANGULAR +/- 1°				
3RD ANGLE PROJECTION				
TITLE				
MIDI FUSE HOLDER				
WITH WIDE OPENINGS				
TOLERANCE UNLESS OTHERWISE SPECIFIED				
ONE PLACE DEC +/- .25				
THREE PLACE DEC +/- .100				
ANGULAR +/- 1°				
GRAMS/PIECE				
REVISION DRWG. NO.				
B 04980913ZXT				
OUTLINE				
04980913ZXT				

LTR	DATE	REVISION	CHK	APD
A	05/25/05	61735 - RELEASE	DJG	
B	06/08/07	B5460D-REDRAWN IN UG ADDED TOLERANCE TO DIMENSIONS, 7.24 WAS B.19	GMB	

UNLESS OTHERWISE SPECIFIED, DIMENSIONS ARE IN MILLIMETERS.
DIMENSIONS IN BRACKETS [] ARE INCHES

UNLESS OTHERWISE SPECIFIED, DIMENSIONS DO NOT INCLUDE PLATING.

© DENOTES CRITICAL CHARACTERISTICS.

CPK DENOTES CPK DIMENSIONS, -MINIMUM CPK VALUE

ST DENOTES A CHARACTERISTIC THAT PROVIDES AN INDICATION OF PROCESS PERFORMANCE. PROCEDURE FOR MEASUREMENT AND TRACKING TO BE DEFINED IN LITTELFUSE INSPECTION INSTRUCTIONS

CP DENOTES CP DIMENSIONS, -MINIMUM CP VALUE MUST BE WITHIN THE DIMENSIONAL LIMITATIONS SHOWN ON DRAWING AND INITIALLY LOCATED TO ALLOW FOR MAXIMUM TOOL LIFE

METRIC

