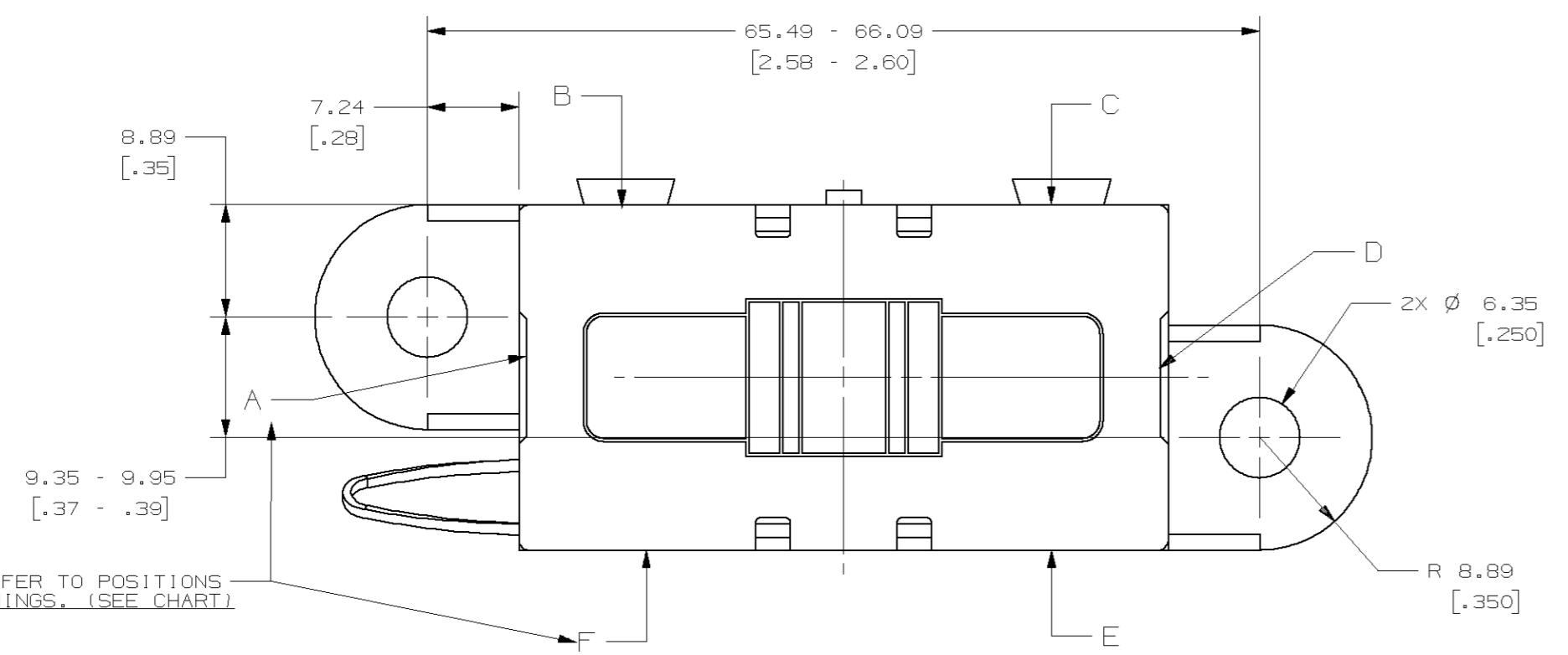
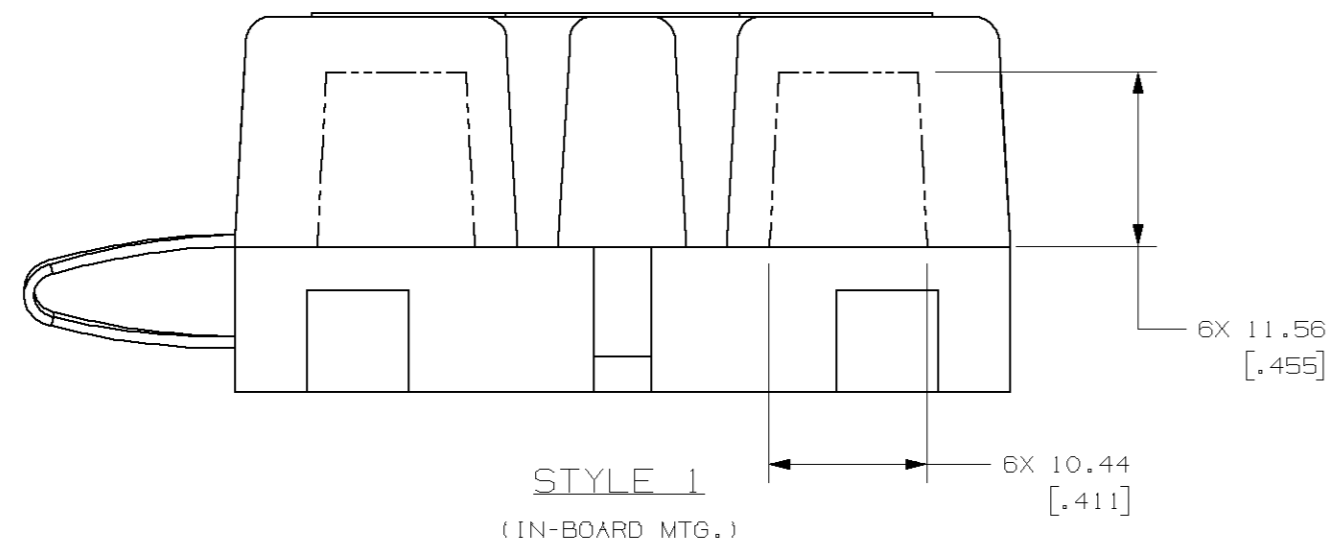
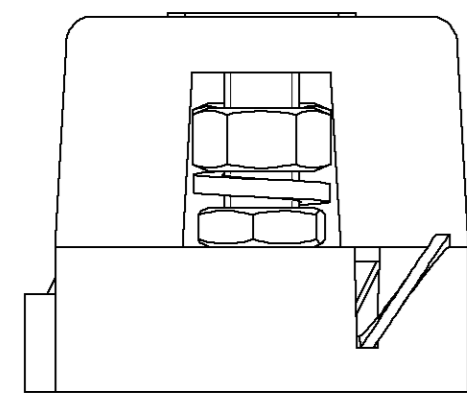
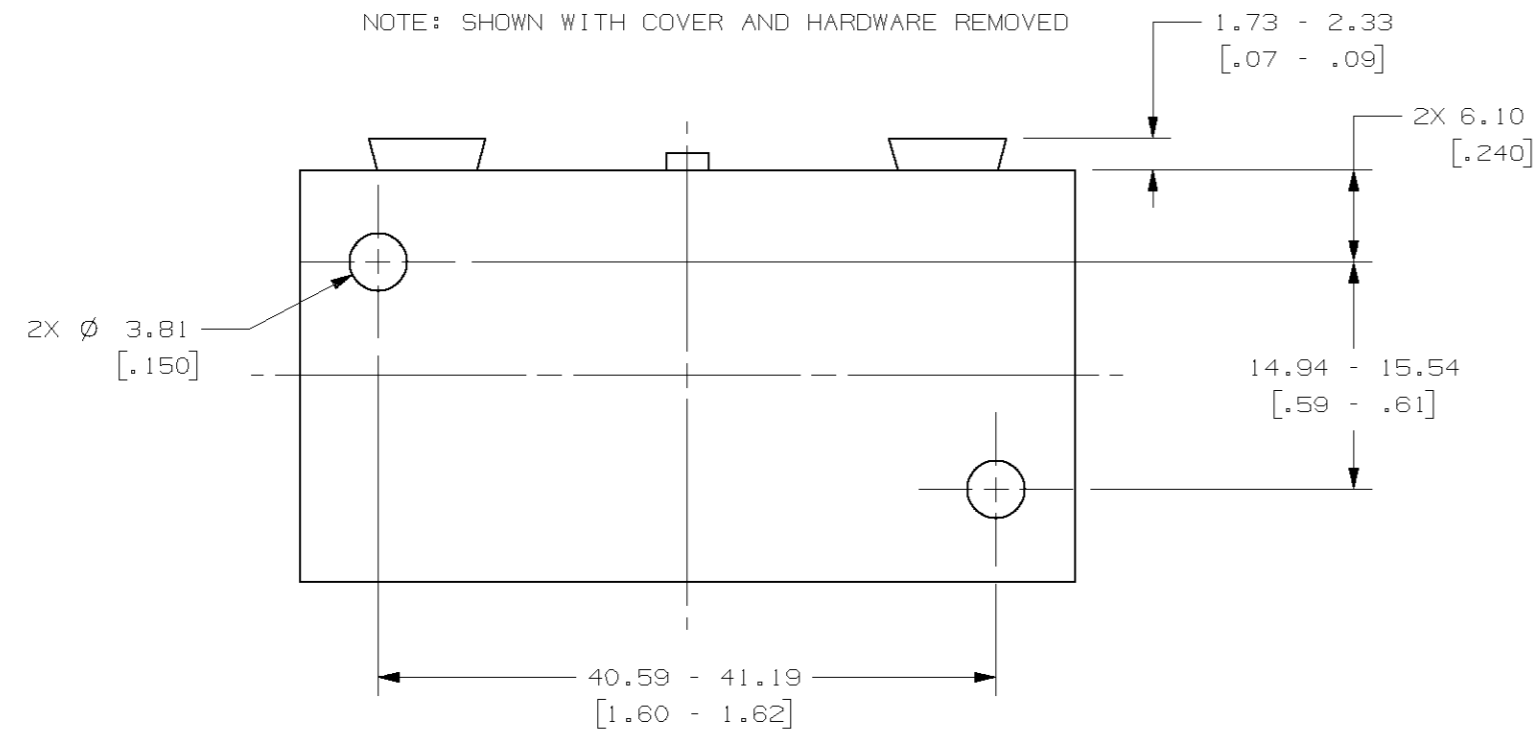


PART NUMBER	COVER OPENING	DIMENSION "A"	FUSE	FUSE QTY/1000	SPLIT WASHER	SPLIT WASHER QTY/1000	HEX NUT	HEX NUT QTY/M	RACHT FASTENER	RACHT FASTENER QTY/1000	STYLE
04980900ZXT	A D	10.44 [ .411 ]	NO	N/A	YES	2000	YES	2000	NO	N/A	1
04980902ZXT	A D	10.44 [ .411 ]	NO	N/A	NO	N/A	YES	2000	NO	N/A	1
04980903ZXT	A D	10.44 [ .411 ]	NO	N/A	YES	2000	YES	2000	NO	N/A	2
04980904ZXT	A D	10.44 [ .411 ]	NO	N/A	YES	2000	YES	4090	NO	N/A	1
04980905ZXT	A C E	10.44 [ .411 ]	NO	N/A	YES	2000	YES	2000	NO	N/A	1
04980906ZXT	A E	10.44 [ .411 ]	NO	N/A	YES	2000	YES	2000	NO	N/A	1
04980907ZXT	A C	10.44 [ .411 ]	NO	N/A	YES	2000	YES	2000	NO	N/A	1
04980908ZXT	E F	N/A	NO	N/A	NO	N/A	NO	N/A	NO	N/A	2
04980909ZXT	E F	N/A	100A	1000	YES	2000	YES	2000	YES	2000	2
04980910ZXT	E F	N/A	NO	N/A	YES	2000	YES	2000	NO	NO	1
04980911ZXT	E F	N/A	50A	1000	YES	2000	YES	2000	YES	2000	2
04980912ZXT	A E F	10.44 [ .411 ]	NO	N/A	YES	2000	YES	2000	NO	N/A	1
04980913ZXT	A D	15.47 [ .609 ]	NO	N/A	NO	N/A	NO	N/A	YES	2000	2
04980914ZXT	A D	15.47 [ .609 ]	40A	1000	YES	2000	YES	2000	YES	2000	2
04980915ZXT	E F	N/A	NO	N/A	YES	2000	YES	2000	NO	N/A	2

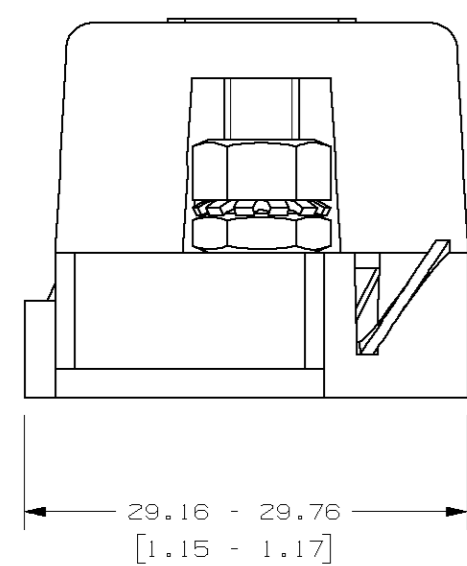
\*FOR ADDITIONAL INFORMATION SEE INDIVIDUAL DRAWINGS

LTR	DATE	REVISION	CHK	APD
A	05/25/05	61735 - RELEASE GLAB		
B	06/07/07	054900-FEDRAWN IN US & CONVERT TO METRIC, ADDED TOLERANCE TO DIMENSIONS, 7.24 WAS 18.191 GMS		

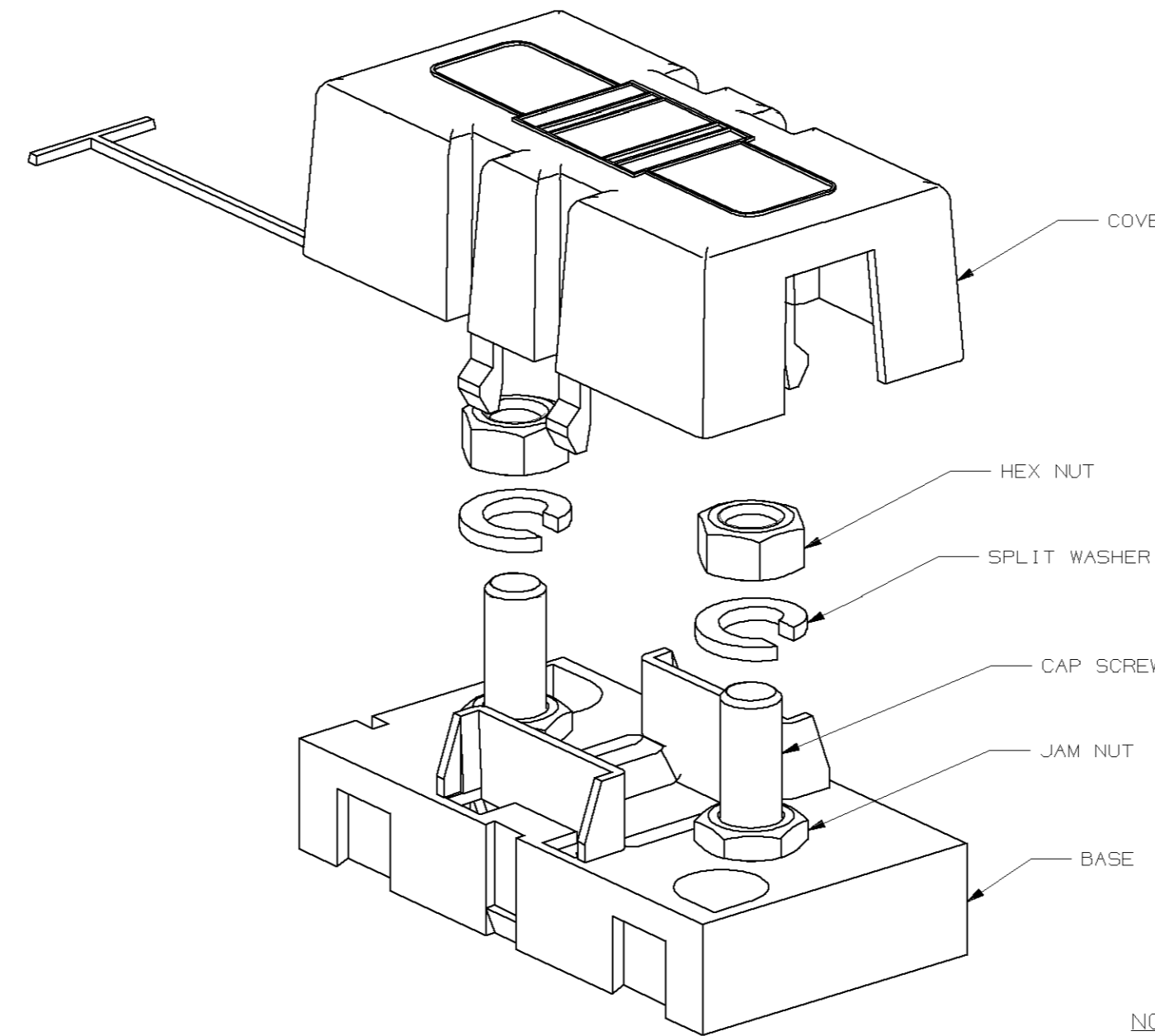
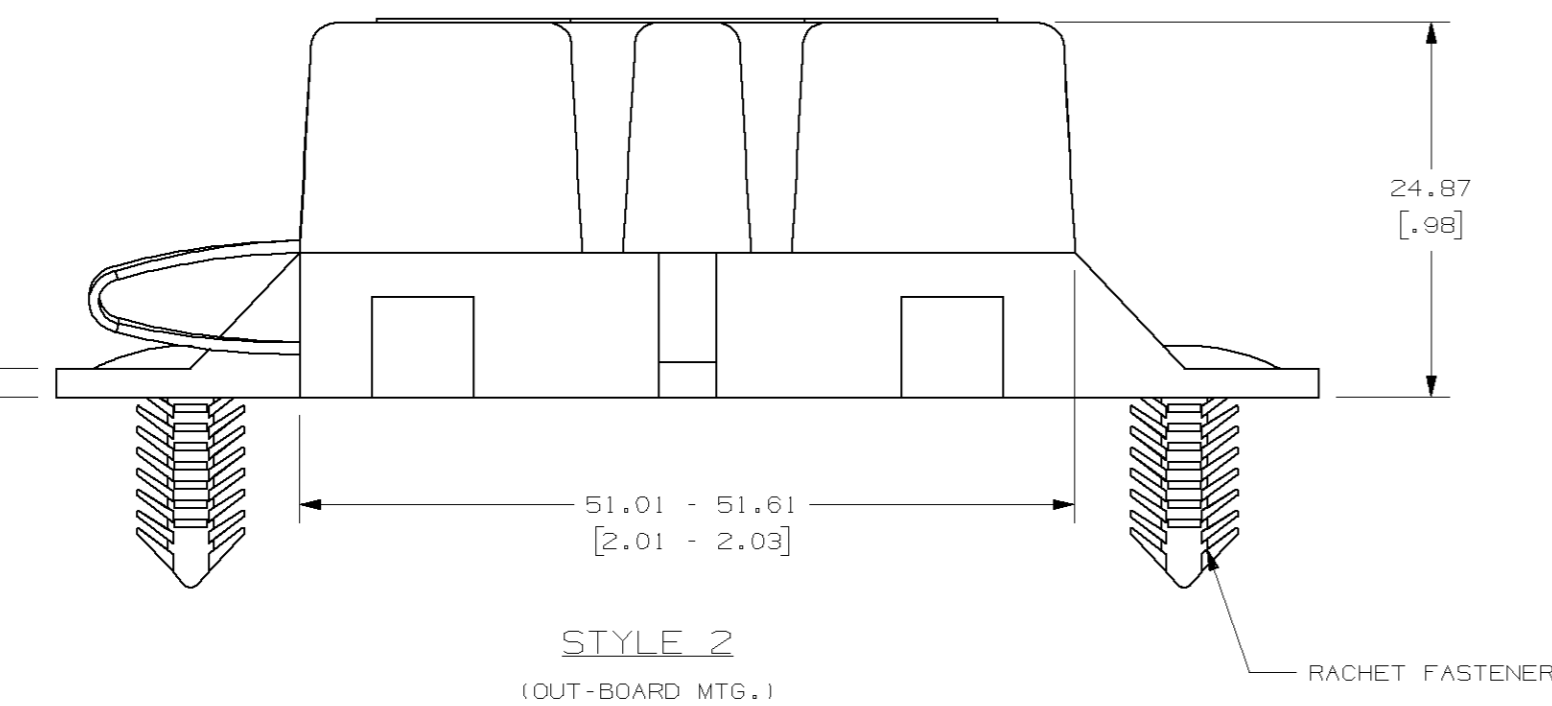
NOTE: SHOWN WITH COVER AND HARDWARE REMOVED



LETTER DESIGNATIONS REFER TO POSITIONS OF AVAILABLE COVER OPENINGS. (SEE CHART)

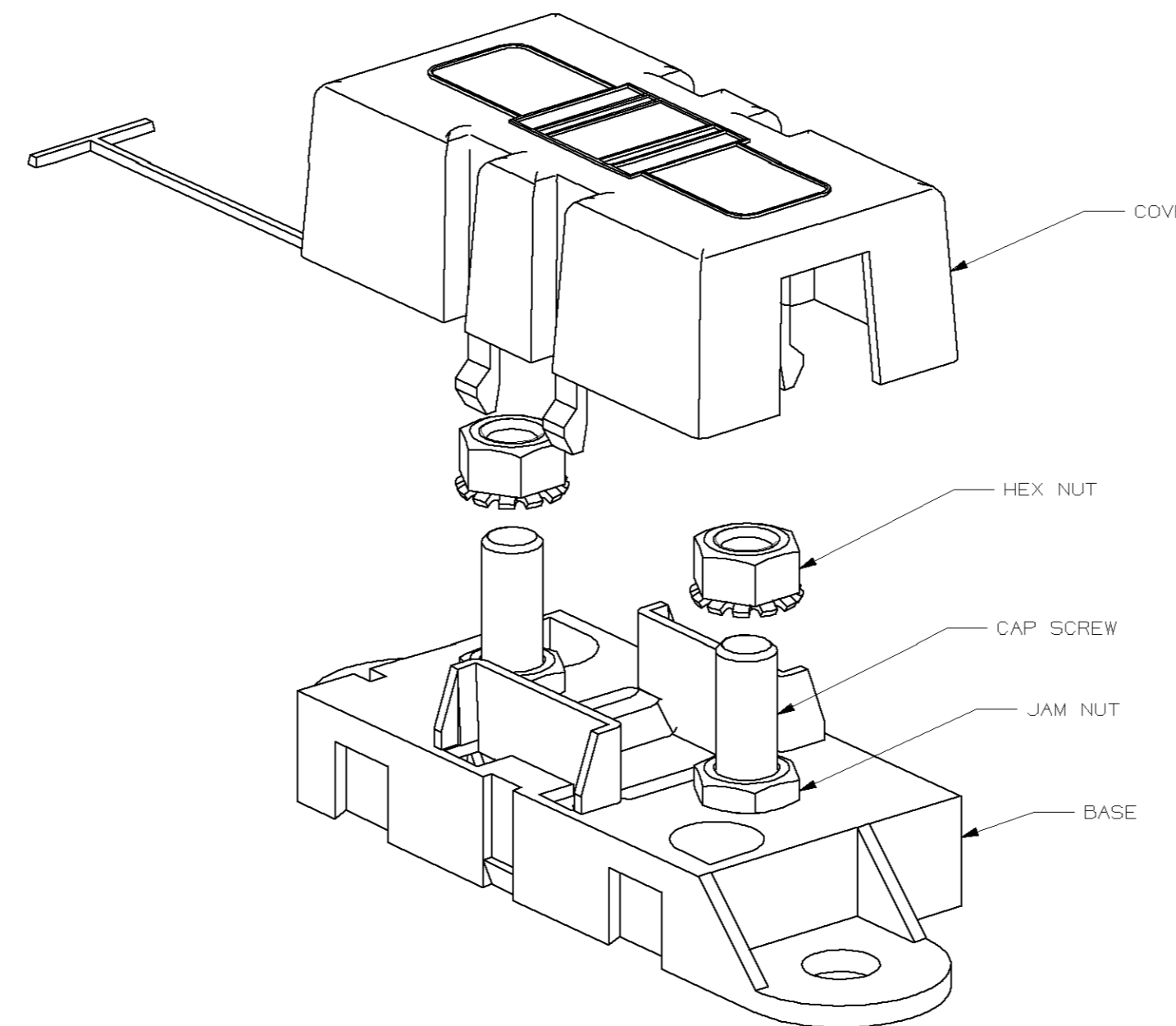


1.81 - 2.21 [.083 - .087]



NOTES:

- MATERIAL:
  - \* BODY-GLASS FILLED THERMOPLASTIC; COLOR-BLACK
  - \* COVER-THERMOPLASTIC; COLOR-BLACK
  - \* HARDWARE-M5 THREADED STUDS & NUTS AND STEEL LOCKWASHER WITH ZINC AND TRIVALENT CHROMATE, LEACHED AND SEALED, INTEGRAL TORQUE CONTROL LUBRICANT FINISH (MEETS ASTM STANDARD B-117, 96 HR. SALT SPRAY REQUIREMENT).
  - (04980902ZXT) \* HARDWARE-M5 THREADED STUDS & NUTS WITH INTEGRAL LOCKWASHER WITH ZINC AND TRIVALENT CHROMATE, LEACHED AND SEALED, INTEGRAL TORQUE CONTROL LUBRICANT FINISH. (MEETS ASTM STANDARD B-117, 96 HR. SALT SPRAY REQUIREMENT).
- TORQUE REQUIRED FOR M5 FUSE TERMINAL & CONNECTOR LOCKING NUTS TO BE 4.0-5.0 NEWTON METERS (35-44 IN-LBS)
- HOLDER MEETS L/F VALIDATION TEST SPEC. VS-005004.



NO	COMPONENT NO	DESCRIPTION	QTY/M	U/M
BILL OF MATERIALS				
UNLESS OTHERWISE SPECIFIED, DIMENSIONS ARE IN MILLIMETERS. DIMENSIONS IN BRACKETS ( ) ARE INCHES.				
UNLESS OTHERWISE SPECIFIED, DIMENSIONS DO NOT INCLUDE PLATING.				
TOLERANCING TO BE INTERPRETED IN ACCORDANCE WITH ANSI Y14.5M-1994.				
◎	DENOTES CRITICAL CHARACTERISTICS.			
CPK	DENOTES CPK DIMENSIONS, -MINIMUM CPK VALUE.			
(ST)	DENOTES A CHARACTERISTIC THAT PROVIDES AN INDICATION OF PROCESS PERFORMANCE. PROCEDURE FOR MEASUREMENT AND TRACKING TO BE DEFINED IN LITTELFUSE INSPECTION INSTRUCTIONS.			
CP	DENOTES CP DIMENSIONS, -MINIMUM CP VALUE MUST BE WITHIN THE DIMENSIONAL LIMITATIONS SHOWN ON DRAWING AND INITIALLY LOCATED TO ALLOW FOR MAXIMUM TOOL LIFE.			
MATL SPEC		FINISH		
DRW	GLAB	DATE	SCALE	
		05/25/05	2:1	
TOLERANCE UNLESS OTHERWISE SPECIFIED				
ONE PLACE DEC ±0.3 [.012]				
TWO PLACE DEC ±0.13 [.005]				
THREE PLACE DEC ±0.050 [.002]				
ANGULAR ±1°				
TITLE				
MIDIFUSE HOLDER				
DRW. NO.		OUTLINE		
04980900ZXT		04980900ZXT THRU		
04980915ZXT		04980915ZXT		
REVISION		REV. NO.		
B		1		
DES PLAINE, ILLINOIS 60518				

METRIC

CAD GENERATED DRAWING - NO PENCIL CHANGES ALLOWED