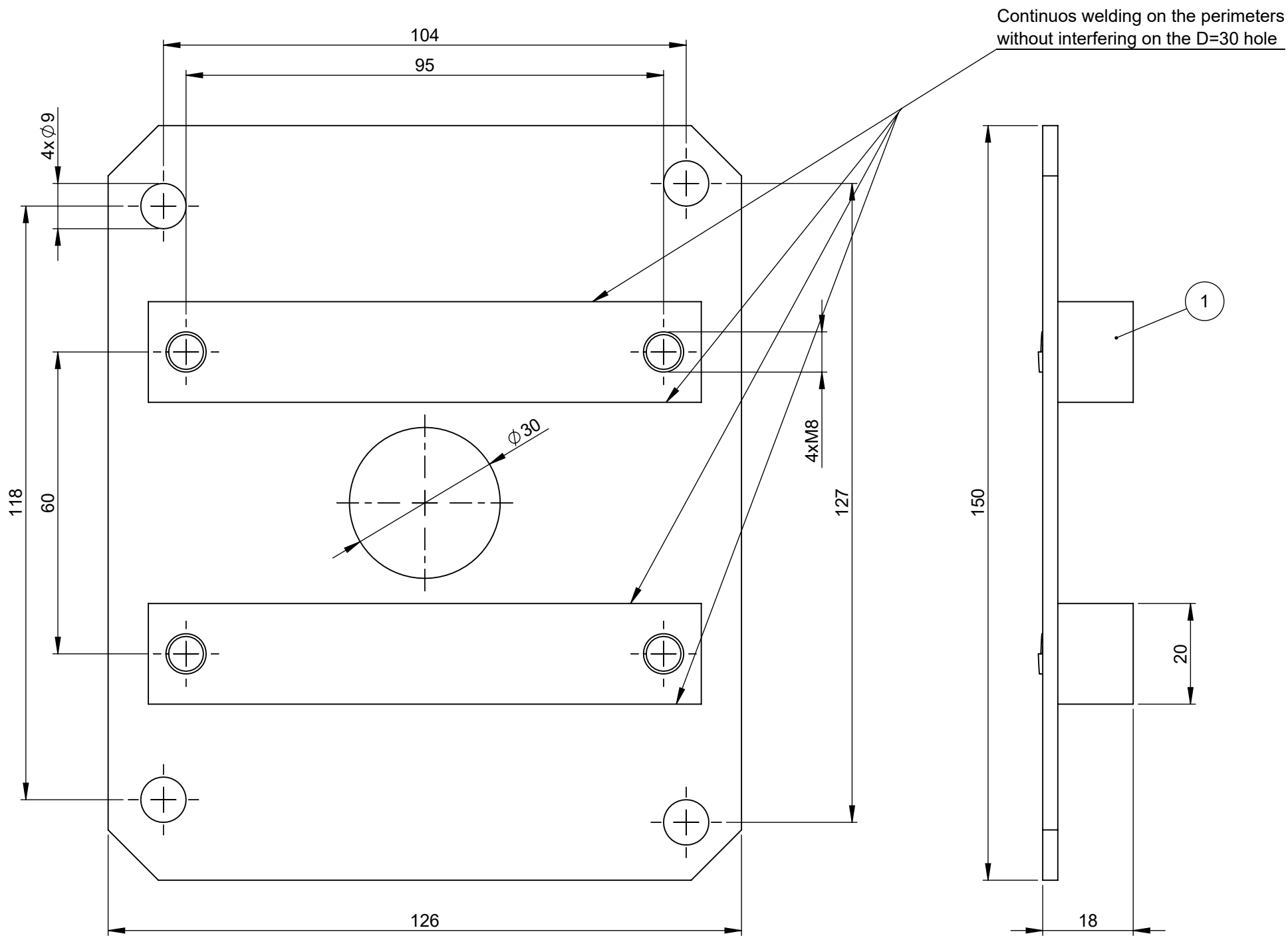


THIS DRAWING AND THE INFORMATION CONTAINED WITHIN IT ARE CONFIDENTIAL AND MAY NOT BE COPIED OR DISCLOSED WITHOUT THE WRITTEN PERMISSION OF LITTELFUSE.

| REVISIONS | | | | | |
|-----------|-----------------|-----------|-----------|-------------|----------|
| REV. | DESCRIPTION | DATE | GCF / ECR | DESIGNED | APPROVED |
| A | Initial Release | 31-Jan-23 | | L.Dal Molin | M.Tinto |



| 1 | Bracket | Steel | 1 |
|------|-------------|----------|------|
| POS. | DESCRIPTION | MATERIAL | Q.ty |
| | | | |

DIMENSIONS AND TOLERANCES IN MILLIMETERS, DEFINED ACCORDING TO ISO 1101-2017.

| linear dimensions | | | | | | |
|-------------------|------|------|------|------|------|-------|
| 0,5 | >3 | >6 | >30 | >120 | >400 | >1000 |
| 3 | 6 | 30 | 120 | 400 | 1000 | 2000 |
| ±0,2 | ±0,3 | ±0,5 | ±0,8 | ±1,2 | ±2 | ±3 |

| angle (for range of lengths) | | | |
|------------------------------|-----|--------|--------|
| up to | >10 | >50 | >120 |
| 10 | 50 | 120 | 400 |
| ±1°30' | ±1° | ±0°30' | ±0°15' |

| | |
|-----|---|
| ● | FIT/ FUNCTION CRITICAL CHARACTERISTICS SYMBOL |
| <S> | SAFETY/ COMPLIANCE CRITICAL CHARACTERISTICS SYMBOL |
| CPK | DENOTES CPK DIMENSIONS MINIMUM CPK VALUE |
| ST | DENOTES A CHARACTERISTIC THAT PROVIDES AN INDICATION OF PROCESS PERFORMANCE. PROCEDURE FOR MEASUREMENT AND TRACKING TO BE DEFINED IN LITTELFUSE INSPECTION INSTRUCTIONS |
| CP | DENOTES CP DIMENSIONS, -MINIMUM CP VALUE MUST BE WITHIN THE DIMENSIONAL LIMITATIONS SHOWN ON DRAWING AND INITIALLY LOCATED TO ALLOW FOR MAXIMUM TOOL LIFE |

| | NAME | DATE | Expertise Applied Answers Delivered | | |
|------------------------------|-------------|-------------|--|----------------------|----------------|
| DRAWN | L.Dal Molin | 31 Jan 2023 | | | |
| CHECKED | - | - | | | |
| | - | - | | | |
| FORM NO: CVP-PE40-0013 REV A | | | TITLE | | |
| FIRST ANGLE PROJECTION | | | BRACKET FOR TGC/RMCDE | | |
| | | | SIZE: A3 | DWG. NO. OL-00901400 | OUTLINE REV. A |
| DO NOT SCALE DRAWING | | | SCALE 1:1 | SHEET 1 OF 1 | |