

MP8000 Bluetooth® Overload Relay



Configuring a Windows PC for Point-to-Point Ethernet Communications

1. Open the computer's Control Panel.
2. In the Control Panel, search for the "Network and Sharing Center" link (shown in figure 1 below).

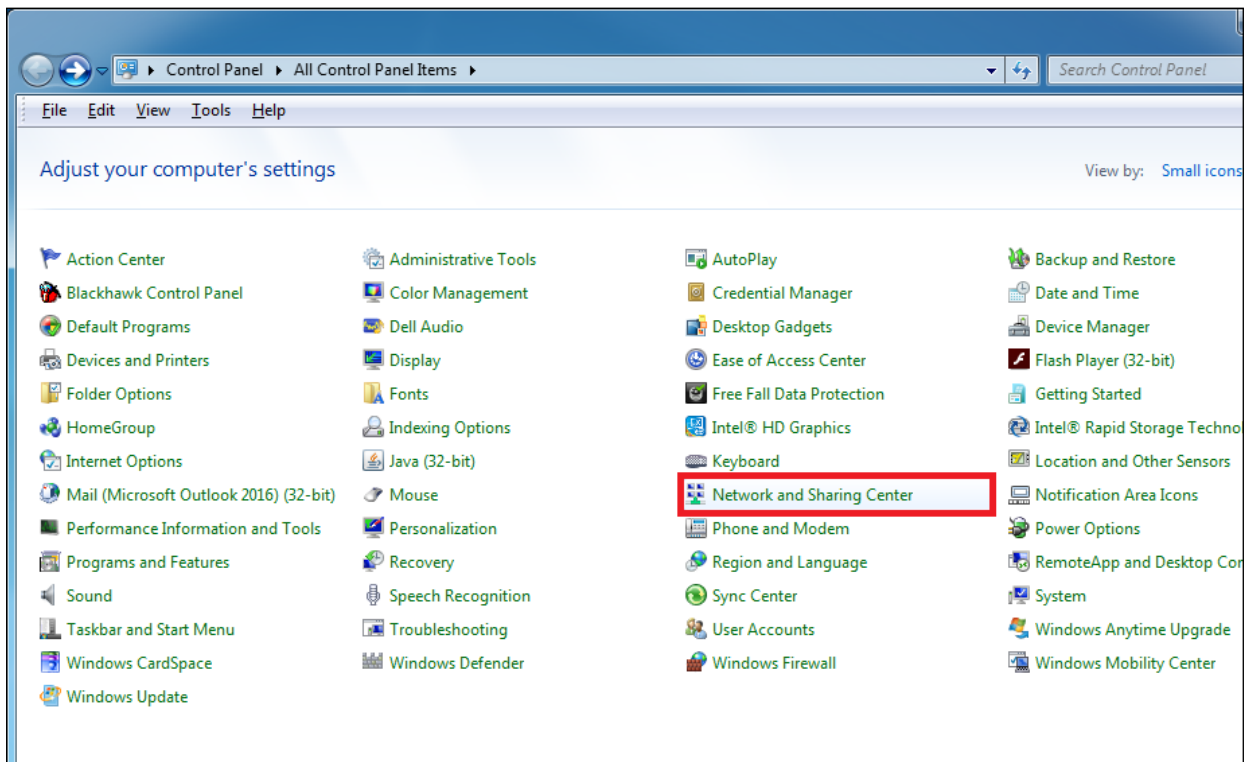


Figure 1. Control Panel view showing Network and Sharing Center link

MP8000 Point-to-Point Configuration

3. In the left pane of the Network and Sharing Center, click on the “Change adapter settings” link (shown in figure 2 below).

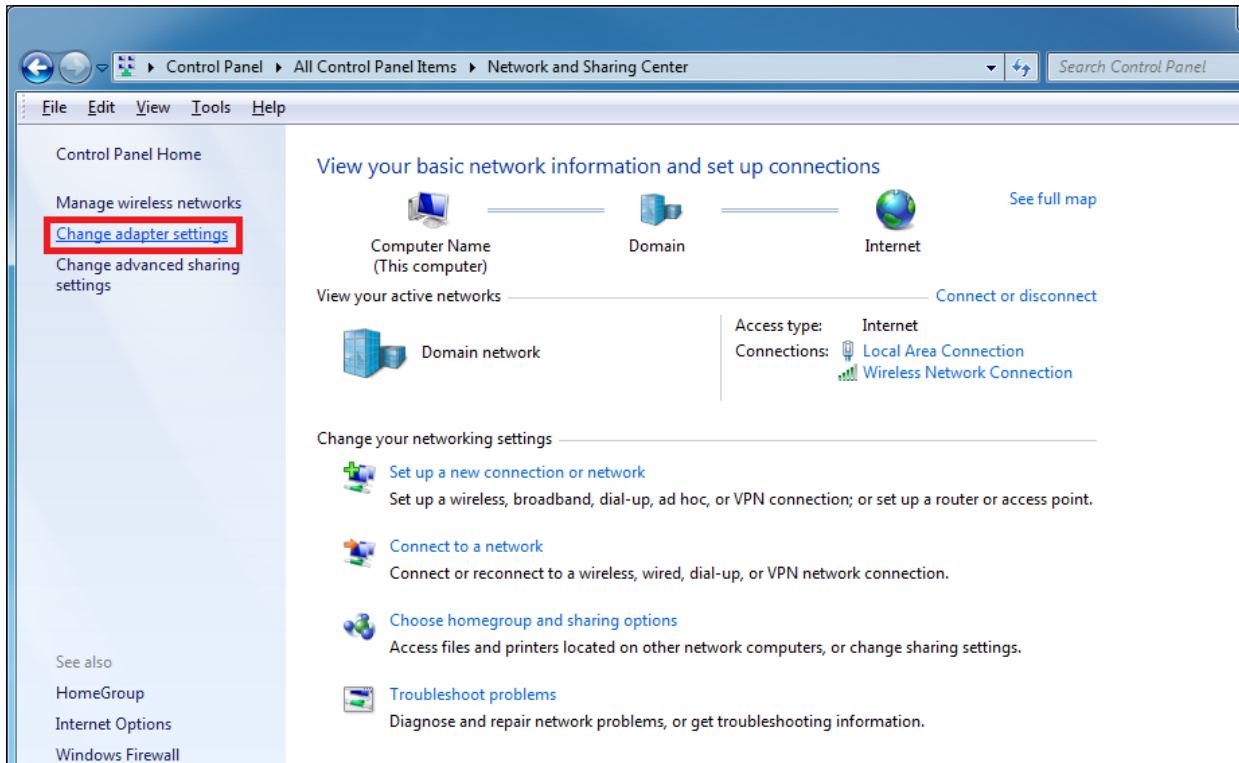


Figure 2. Network and Sharing Center Change adapter settings link

4. In the Change adapter settings link, you will see icons representing all of the available Ethernet and Bluetooth connections. The Ethernet port on PCs is usually listed as “Local Area Connection” (as shown in figure 3 below).

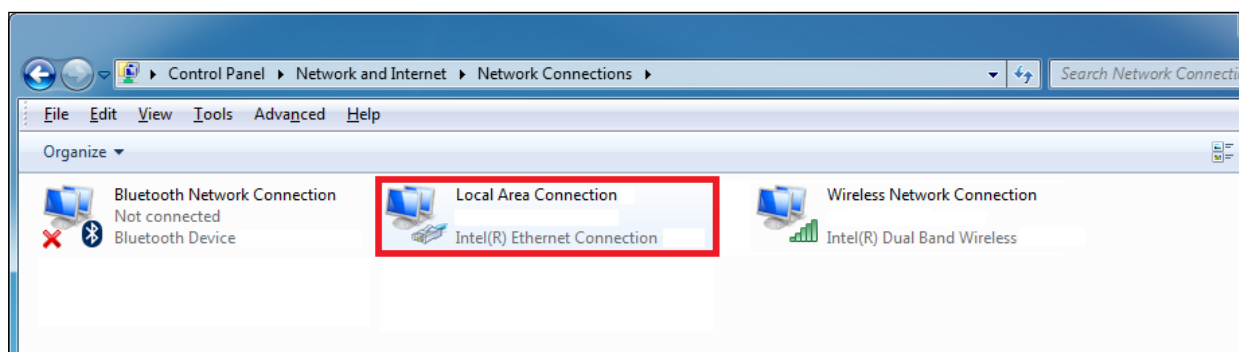


Figure 3. Local Area Connection

MP8000 Point-to-Point Configuration

5. Right-clicking the “Local Area Connection” icon will bring up a sub-menu. Select “Properties” from the sub-menu (shown in figure 4 below).

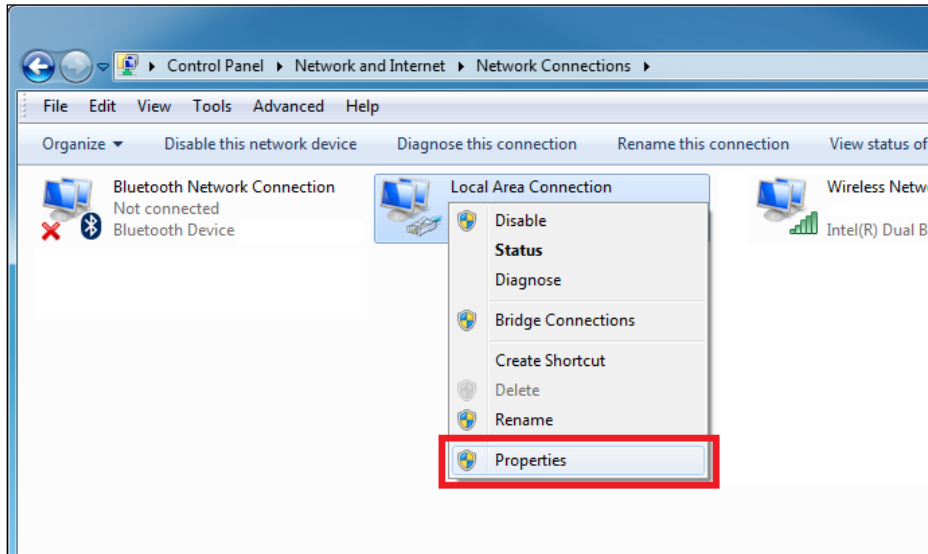


Figure 4. Local Area Connection “Properties” selection

6. The “Local Area Connection Properties” window will open.
7. Highlight “Internet Protocol Version 4 (TCP/IPv4)” in the items list and then click the “Properties” button on the right-hand side of the window (both shown in Figure 5 below).

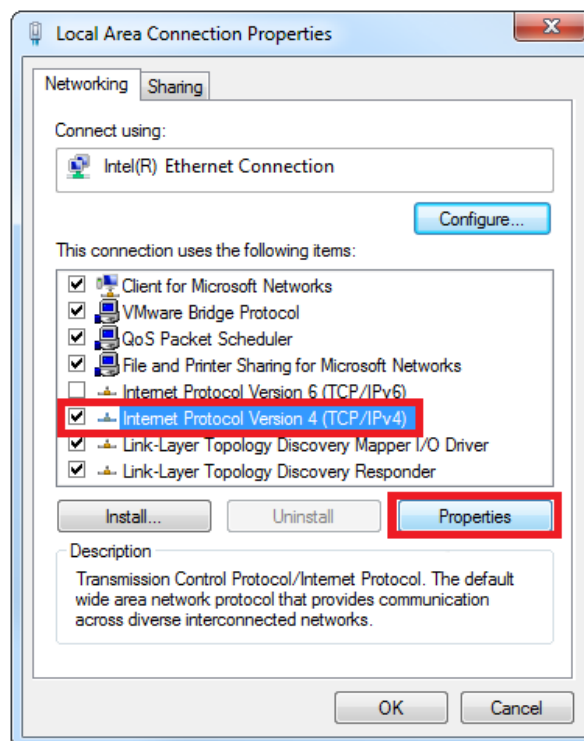


Figure 5. Local Area Connection Properties window

MP8000 Point-to-Point Configuration

8. When the Internet Protocol Version 4 (TCP/IPv4) Properties window opens, you will see that your computer is configured to either “Obtain an IP address automatically” (shown in figure 6 below) OR “Use the following IP address” (shown in figure 7 below).

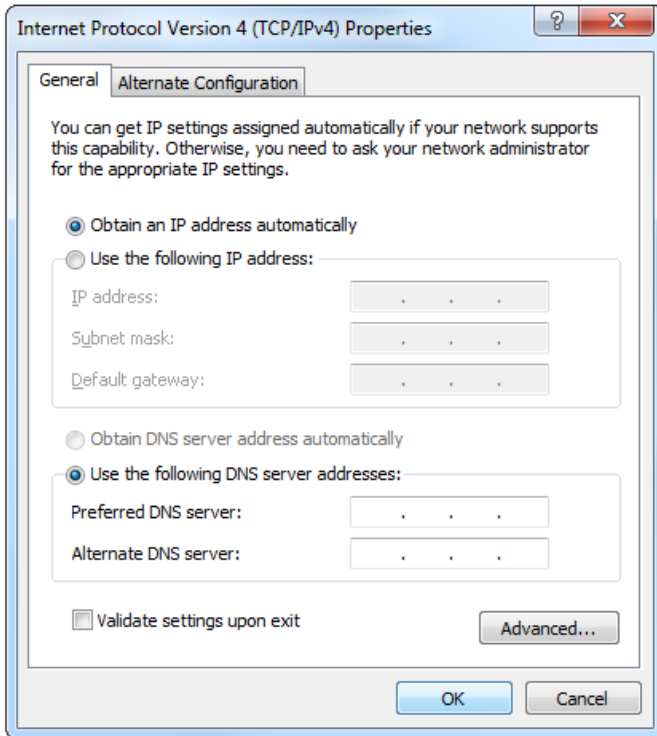


Figure 6. Obtain an IP address automatically

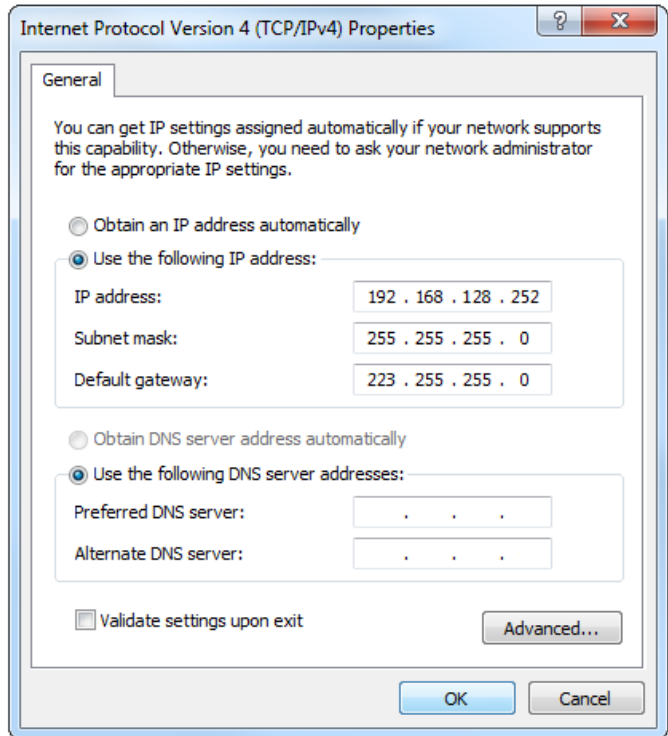


Figure 7. Use the following IP address

9. If your computer is configured to use a static IP address, make sure and record the values listed in all of the relevant fields.

NOTE - It is not uncommon for some fields to be completed and some blank

- IP address: _____ • _____ • _____ • _____
- Subnet Mask: _____ • _____ • _____ • _____
- Default Gateway: _____ • _____ • _____ • _____
- Preferred DNS server: _____ • _____ • _____ • _____
- Alternate DNS server: _____ • _____ • _____ • _____

MP8000 Point-to-Point Configuration

10. In order for the point-to-point connection to function properly, the Internet Protocol Version 4 (TCP/IPv4) Properties must be configured as follows (shown in figure 8 below):

- IP address: 10 • 106 • 0 • 1
- Subnet Mask: 255 • 255 • 0 • 0

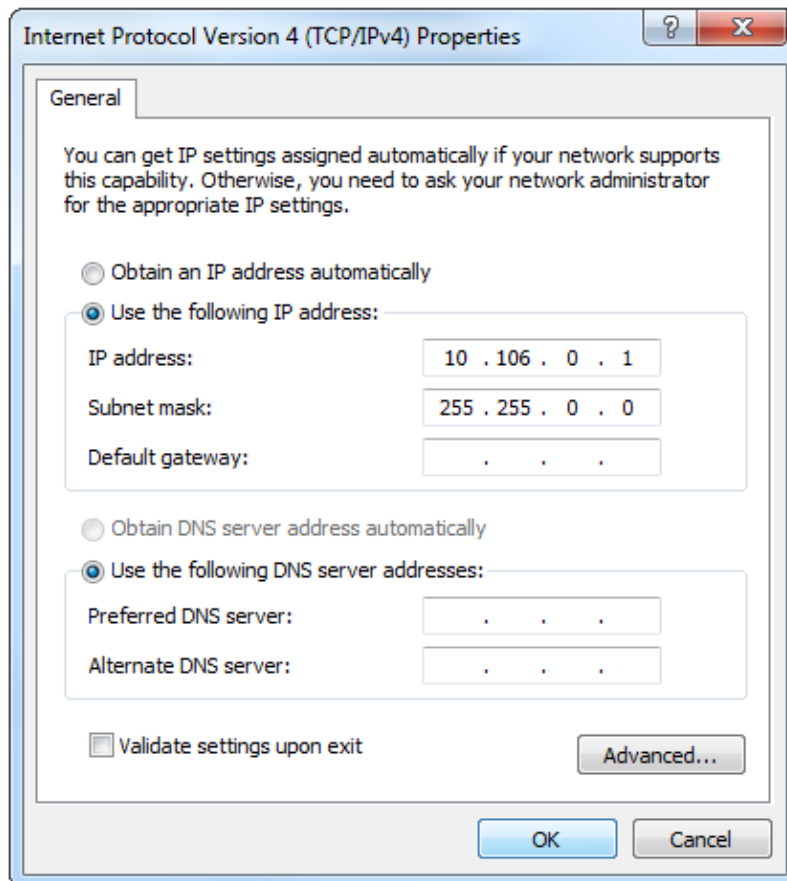


Figure 8. Point-to-Point Communication TCP/IPv4 settings

11. Click the “OK” button.
12. The computer is now properly configured for point-to-point communications.
13. To restore the computer to the settings necessary for communication on the user’s usual network, repeat steps 1-8 and re-establish the IP address, Subnet mask, Default gateway, Preferred DNS server, and Alternate DNS server as they were recorded in step 9.

Questions?

Contact Technical Support:

Tel: +1-800-832-3873

E-mail: relays@littelfuse.com

Disclaimer Notice – Information furnished is believed to be accurate and reliable. However, users should independently evaluate the suitability of and test each product selected for their own applications. Littelfuse products are not designed for, and may not be used in, all applications. Read complete Disclaimer Notice at www.littelfuse.com/product-disclaimer.