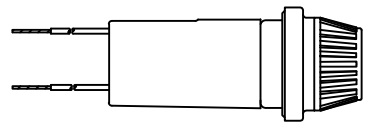
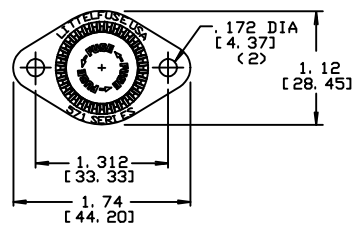
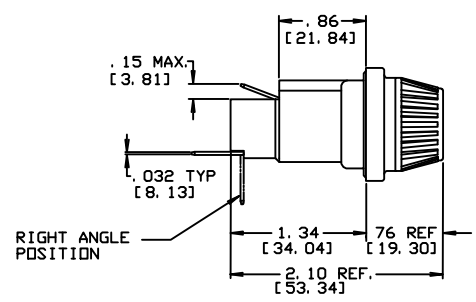
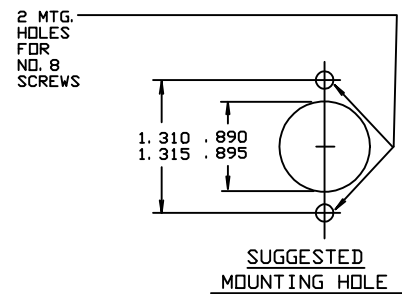
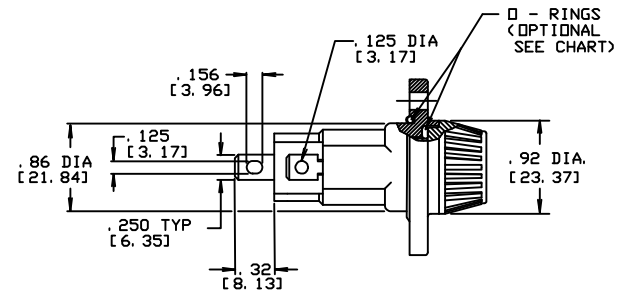


AVAILABLE OPTIONS

PART NO.	DESCRIPTION
0571007	FUSEHOLDER (FOR MIDGET TYPE FUSES 1 13/32" - 1 1/2" LONG) SOLDER/QC TERMINALS, STRAIGHT BOTTOM TERMINAL
0571008	FUSEHOLDER (FOR MIDGET TYPE FUSES 1 13/32" - 1 1/2" LONG) SOLDER/QC TERMINALS, RIGHT ANGLE BOTTOM TERMINAL
0571027	FUSEHOLDER (FOR MIDGET TYPE FUSES 1 5/16" - 1 3/8" LONG) SOLDER/QC TERMINALS, STRAIGHT BOTTOM TERMINAL
0571028	FUSEHOLDER (FOR MIDGET TYPE FUSES 1 5/16" - 1 3/8" LONG) SOLDER/QC TERMINALS, RIGHT ANGLE BOTTOM TERMINAL
05710CC	FUSEHOLDER (FOR CLASS CC TYPE FUSES 1-1/2" LONG W/REJECTION FEATURE) SOLDER/QC TERMINALS, STRAIGHT BOTTOM TERMINAL.
0571RCC	FUSEHOLDER (FOR CLASS CC TYPE FUSES 1-1/2" LONG W/REJECTION FEATURE) SOLDER/QC TERMINAL, RIGHT ANGLE BOTTOM TERMINAL.
05710__A	FUSEHOLDER INDIVIDUALLY BAGGED
05710__P	INCLUDES 2 O-RINGS FOR WATERTIGHT SEAL PER MIL-F-19207
05710__L	FUSEHOLDER W/INSULATED BOOT AND 12" LONG WIRE LEADS FOR IN-LINE MOUNTING.
	OR ANY COMBINATION THEREOF

LTR	DATE	REVISION	CHK	APD
F	10/9/97	38682C - REVISE & REDRAWN IN NEW STRUCTURE	KAM	
G	1/24/19	520336ECP/D - ADD LEADED VERSION DETAIL	MRY	



FUSEHOLDER W/ WIRE LEADS & BOOT

- NOTES:**
- METRIC DIM'S ARE SHOWN IN BRACKETS, [].
 - MATERIALS:
 BODY: BLACK THERMOPLASTIC
 TERMINALS: BRASS, TIN PLATED
 KNOB: BLACK THERMOSET PLASTIC
 KNOB INSERT: BRASS, NICKEL PLATED
 SPRING: STAINLESS STEEL, COPPER PLATED
 O-RINGS: BUNA N RUBBER
 - APPROVALS:

NO	COMPONENT NO	DESCRIPTION	QTY/M	U/M
2				
1				

BILL OF MATERIAL				
UNLESS OTHERWISE SPECIFIED, DIMENSIONS DO NOT INCLUDE PLATING.				
●	DENOTES CRITICAL CHARACTERISTICS.			
CPK	DENOTES CPK DIMENSIONS, -MINIMUM CPK VALUE			
(ST)	DENOTES A CHARACTERISTIC THAT PROVIDES AN INDICATION OF PROCESS PERFORMANCE. PROCEDURE FOR MEASUREMENT AND TRACKING TO BE DEFINED IN LITTELFUSE INSPECTION INSTRUCTIONS.			
CP	DENOTES CP DIMENSIONS, -MINIMUM CP VALUE MUST BE WITHIN THE DIMENSIONAL LIMITATIONS SHOWN ON DRAWING AND INITIALLY LOCATED TO ALLOW FOR MAXIMUM TOOL LIFE.			
				C
COPIES TO	MATL SPEC			
1	9	18	FINISH	
2	10	19		
3	12	20		
4	13	21	DRW	KAM
5	14	23	DATE	9/22/97
6	15	33	SCALE	1:1
7	16	43	CHK	DATE
8	17	53	APPD	DATE
			RAW STK VT	LBS/M
TOLERANCE UNLESS OTHERWISE SPECIFIED TWO PLACE DEC ±.01 FRACTION ± THREE PLACE DEC ±.005 ANGULAR ±1°				
TITLE				
MIDGET CLASS CC FUSE FUSEHOLDER				
Littelfuse		REVISION	SERIAL NO.	OUTLINE
CHICAGO, ILLINOIS 60631		G	0571000	0571000
				SERIES

CAD GENERATED DRAWING - NO PENCIL CHANGES ALLOWED