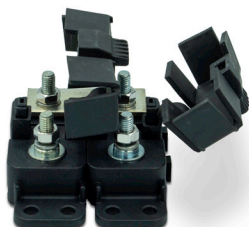


MIDI® FLEX SERIES

58V BOLT-DOWN FUSE HOLDER



04981038HXFC



04982001ZXFC

Description

Thanks to its flexible cover, the MIDI® Flex Series 58V Bolt-Down Fuse Holder makes it simple to install up to a 200A MIDI® fuse. Its cover features 6 different positions for cable entry and accommodates large wire sizes and ring terminal stack up.

This bolt-down fuse holder has a dovetail feature on the sides that lets you connect multiple MIDI® Flex Series fuse holders. Busbars for multi-fuse applications are available (sold separately) so you can create a fused automotive power distribution block. MIDI® Flex Series fuse holders can also be combined with MEGA® Flex Series fuse holders (sold separately) for a high- and low-amperage solution.

Web Resources

Download 2D print, installation guide and technical resources at: littelfuse.com/FLEX-MIDI

Ordering Information

| PART NUMBER | DESCRIPTION | FUSE TYPE | MOUNTING METHOD | MAX CURRENT RATING | MAX VOLTAGE RATING |
|--------------|--|-----------|-----------------------------|--------------------|--------------------|
| 04981038-BP | 58V Bolt-Down Fuse Holder - Blister Pack | MIDI Fuse | Bolt Down, M4 Mounting Hole | 200A | 58VDC |
| 04981038HXFC | 58V Bolt-Down Fuse Holder | MIDI Fuse | Bolt Down, M4 Mounting Hole | 200A | 58VDC |
| 04982001ZXFC | 58V Bolt-Down 2-Pole Fuse Holder | MIDI Fuse | Bolt Down, M4 Mounting Hole | 200A | 58VDC |
| 84904 | 58V Bolt-Down Fuse Holder Base & Stud Assembly | - | Bolt Down, M4 Mounting Hole | - | - |
| 84905 | Flexible Fuse Holder Cover | - | - | - | - |
| 882-267-002 | 2-Position Busbar for MIDI® Flex Series Fuse Holders | - | - | - | - |
| 882-267-003 | 3-Position Busbar for MIDI® Flex Series Fuse Holders | - | - | - | - |
| 882-267-004 | 4-Position Busbar for MIDI® Flex Series Fuse Holders | - | - | - | - |
| 882-267-005 | 5-Position Busbar for MIDI® Flex Series Fuse Holders | - | - | - | - |

Specifications

| | |
|-----------------------------------|-----------------------------|
| Current Rating Continuous: | 200A |
| Fuse Type: | MIDI® Fuse |
| Flammability Rating: | UL 94 V-0 |
| Input Terminals: | M5 Stud |
| Mounting Method: | Bolt Down, M4 Mounting Hole |
| Output Terminals: | M5 STUD |
| Max Voltage Rating: | 58VDC |

Applications

- Battery and Alternator Connections

Features and Benefits

- Compatible with MIDI® bolt-down fuses up to 200A (sold separately unless indicated)
- Flexible cover allows cable entry at 6 different locations, simplifying installation and accommodating large wire sizes and ring terminal stack up
- Dovetail feature lets you connect multiple Flex Series fuse holders together to create a fused power distribution block (busbars for multi-fuse applications are sold separately)
- Slots molded into the base enable secure tie-wrap mounting
- Zinc-plated steel M5 studs and hex nuts
- Bolt-down fuse holder base features M4 mounting holes
- UL 94 V-0 flammability rating