

MICRO2™ Blade Fuses - Aftermarket

Rated 32V

RoHS



Specifications

| | |
|--|--|
| Voltage Rating: | 32 VDC |
| Interrupting Rating: | 1000A @ 32 VDC |
| *Recommended Environmental Temperature: | -40°C to +125°C |
| Terminals Material: | Silver plated / Tin plated zinc alloy |
| Housing Material: | PA66 (U.L. 94 Flammability rating – V2) |
| Net Weight Per Fuse: | 0.53±5% gr |
| Complies with: | SAE 2741, ISO 8820-12:2020 |

*Tin plating's temperature limit is =130°C, Silver plating allows up to 150°C at the terminal interface.

Applications

- Cars
- Trucks
- SUVs
- Offroad vehicles
- Buses
- Watercraft as approved by Littelfuse®

Description

MICRO2™ blade fuses employ subminiature design, which allows them to provide more automotive circuit protection in less space. MICRO2 fuses have also passed performance tests proving their reliability in polluted, humid, and high-temperature environments.

Features & Benefits

- Color coding shows the amperage rating for each fuse
- See-through housing makes it easy to check whether a fuse has blown
- Checkpoints on top make it possible to measure resistance without removing the fuse
- High-contrast amperage stamp on the top of the housing aids identification
- Simple to install and remove








Ordering Information

| COLOR CODE | CURRENT RATING (A) | BULK 4000 PC | BULK 500 PC | BULK 50 PC | BOXED 5 PC | CARDED 5 PC |
|------------|--------------------|--------------|-------------|-------------|------------|-------------|
| | | MATERIAL # | MATERIAL # | MATERIAL # | MATERIAL # | MATERIAL # |
| Tan | 5A | 0327005.ZXS | 0327005.UXS | 0327005.LXS | MIC2005.V | MIC2005.VP |
| Brown | 7.5A | 032707.5ZXS | 032707.5UXS | 032707.5LXS | MIC207.5V | MIC207.5VP |
| Red | 10A | 0327010.ZXS | 0327010.UXS | 0327010.LXS | MIC2010.V | MIC2010.VP |
| Blue | 15A | 0327015.ZXS | 0327015.UXS | 0327015.LXS | MIC2015.V | MIC2015.VP |
| Yellow | 20A | 0327020.ZXS | 0327020.UXS | 0327020.LXS | MIC2020.V | MIC2020.VP |
| Clear | 25A | 0327025.ZXS | 0327025.UXS | 0327025.LXS | MIC2025.V | MIC2025.VP |
| Green | 30A | 0327030.ZXS | 0327030.UXS | 0327030.LXS | MIC2030.V | MIC2030.VP |

MICRO2™ Blade Fuses - Aftermarket

Rated 32V

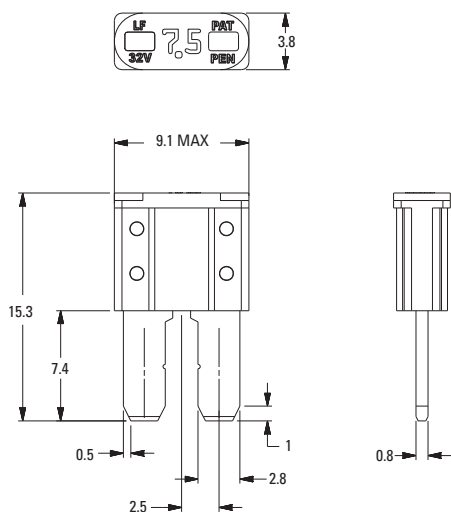
Ratings

| Part Numbers | Current Rating (A) | Housing Material Color | Test Cable Size (mm ²) | Typ. Voltage Drop (mV) | Typ. Cold Resistance (mΩ) | Typ. I ² t (A ² s) |
|-----------------------|--------------------|---|------------------------------------|------------------------|---------------------------|--|
| 0327005_ / MIC2005_ | 5 |  | 0.5 | 116 | 17.4 | 17 |
| 032707.5_ / MIC207.5_ | 7.5 |  | 0.75 | 106 | 10.8 | 47 |
| 0327010_ / MIC2010_ | 10 |  | 1 | 102 | 7.7 | 90 |
| 0327015_ / MIC2015_ | 15 |  | 1.5 | 94 | 4.9 | 190 |
| 0327020_ / MIC2020_ | 20 |  | 2.5 | 91 | 3.5 | 400 |
| 0327025_ / MIC2025_ | 25 |  | 2.5 | 90 | 2.6 | 580 |
| 0327030_ / MIC2030_ | 30 |  | 4 | 88 | 2.1 | 1,000 |

The typical I²t is an average value calculated from the breaking capacity tests by using the melting time before the arcing occurs.

Dimensions

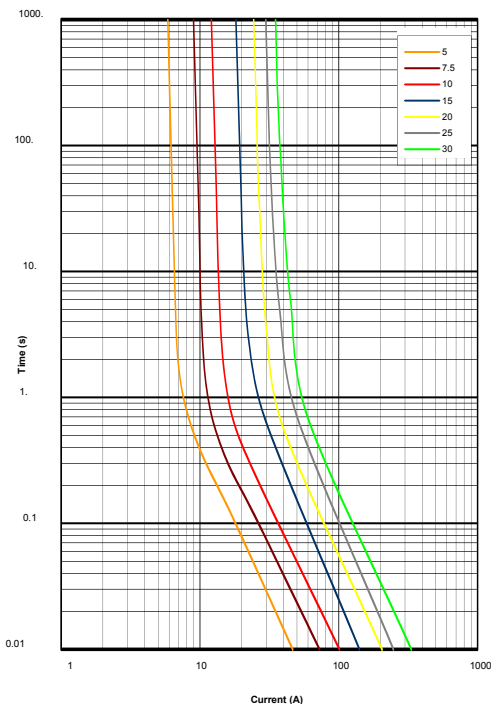
Dimensions in mm for reference only.
See outline drawing for dimensions and tolerances.



MICRO2™ Blade Fuses - Aftermarket

Rated 32V

Time-Current Characteristic Curves

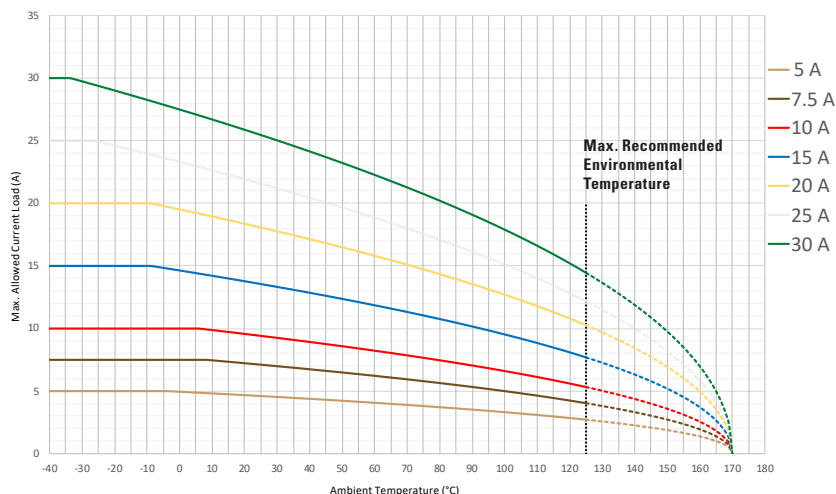


Time-Current Characteristics

| % of Rating | Opening Time Min / Max (s) |
|-------------|----------------------------|
| 110 | 360,000 / ∞ |
| 135 | 0.75 / 120 |
| 160 | 0.3 / 50 |
| 200 | 0.15 / 5 |
| 350 | 0.04 / 0.5 |
| 600 | 0.02 / 0.1 |

Typical Derating of Fuse Melting Element

Temperature Security Margin is 20%
 Wire Cross Section And Fixture Test Set Up Refer To ISO 8820-3
 Please Contact Littelfuse® For Details Regarding Derating Test Set Up



Derating curves may change depending on the final condition of the application (terminals characteristics, wire size etc.). Please ask Littelfuse® for more information.

Temperature Table

| | max. allowed current load (A) at ambient temperature (typical derating) | | | | | | |
|--------------|---|-----|------|------|------|-------|-------|
| | -40°C | 0°C | 20°C | 65°C | 85°C | 110°C | 125°C |
| 5 A | 5 | 5 | 5 | 4 | 4 | 3 | 3 |
| 7.5 A | 7.5 | 7.5 | 7 | 6 | 5 | 5 | 4 |
| 10 A | 10 | 10 | 10 | 8 | 7 | 6 | 5 |
| 15 A | 15 | 15 | 14 | 12 | 10 | 9 | 8 |
| 20 A | 20 | 20 | 18 | 15 | 14 | 12 | 10 |
| 25 A | 25 | 23 | 22 | 18 | 17 | 14 | 12 |
| 30 A | 30 | 27 | 26 | 22 | 20 | 17 | 14 |