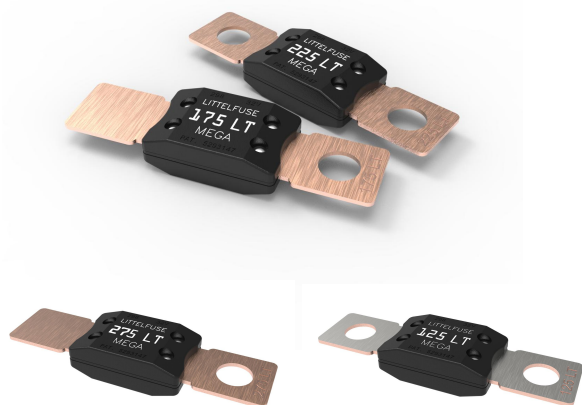


MEGA® Low Temperature

Rated 32V

RoHS



Specifications

Voltage Rating:	32 VDC
Interrupting Rating:	2000A @ 32 VDC
Recommended Environmental Temperature:	-40°C to +125°C
Terminals Material:	Tin plated copper alloy
Housing Material:	PPA-GF33HS (U.L. 94 Flammability rating - HB)
Mounting Torque M8:	12-18 Nm

Description

The MEGA® Low Temperature automotive fuses employ diffusion pill technology to provide predictable time-delayed circuit protection. Like all types of MEGA fuses, MEGA LT fuses are ideal for protecting batteries, alternators, and heavy gauge wire harnesses that experience large inrushes of current. The unique design of MEGA LT fuses, however, ensures a lower voltage drop than other MEGA fuses operating at the same temperatures.

Features & Benefits

- Low voltage drop brings to lower temperatures
- High-contrast ampere rating stamp aids identification
- Available with two mounting holes or one mounting hole M8
- Silver plating available for 125 A fuse rating

Applications

- Cars
- Trucks
- SUVs
- Offroad vehicles
- Buses
- Watercraft as approved by Littelfuse®

Ordering Information

Part Number	Rating	Package Size	Plating	Bolt Hole Qty
0298125.ZXBLT	125	500	Ag	2
0298xxx.ZXEH-LT	150-275	500	None	2
0298xxx.UX1M8LT	150-275	500	None	1

MEGA[®] Low Temperature Rated 32V

Ratings

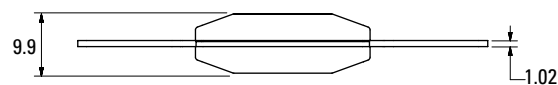
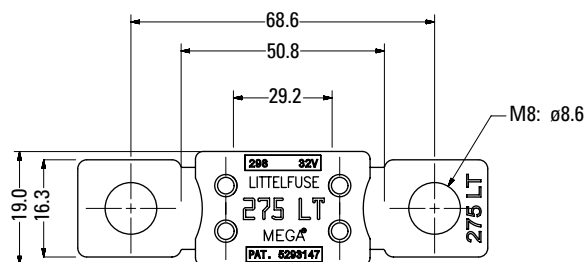
Part Number	Current Rating (A)	Font Color	Test Cable Size (mm ²)	Typ. Voltage Drop (mV)	Typ. Cold Resistance (mΩ)	Typ. I ² t (A ² s)
0298125.ZXBLT	125	□	16	67	0.33	57 000
0298150.ZXEH-LT	150	□	25	62	0.26	59 000
0298175.ZXEH-LT	175	□	25	65	0.23	123 000
0298200.ZXEH-LT	200	□	35	61	0.21	140 000
0298225.ZXEH-LT	225	□	35	57	0.18	317 000
0298250.ZXEH-LT	250	□	50	54	0.14	637 000
0298275.ZXEH-LT	275	□	50	53	0.12	800 000

The typical I²t is an average value calculated from the breaking capacity tests by using the melting time before the arcing occurs.

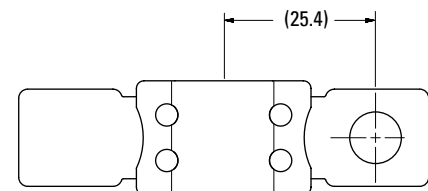
Dimensions

Dimensions in mm for reference only.
See outline drawing for dimensions and tolerances.

ZXBLT & ZXEH-LT Versions

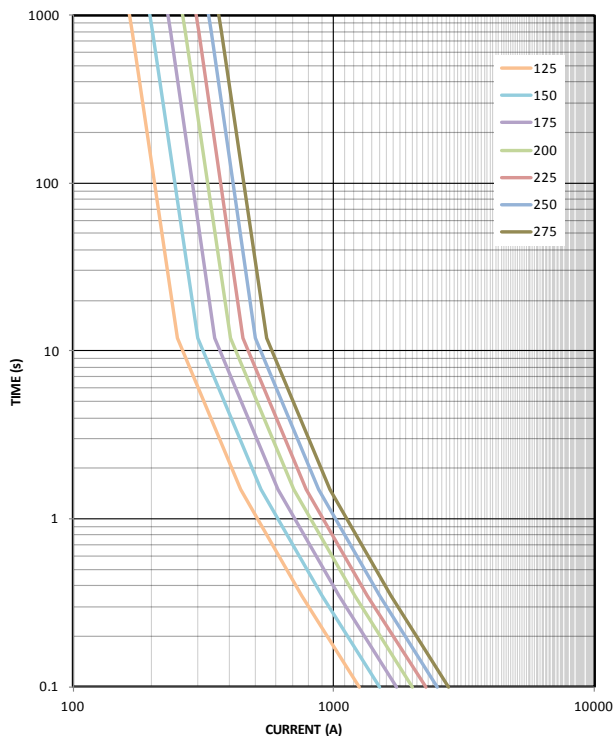


UX1M8LT Version



MEGA[®] Low Temperature Rated 32V

Time-Current Characteristic Curves

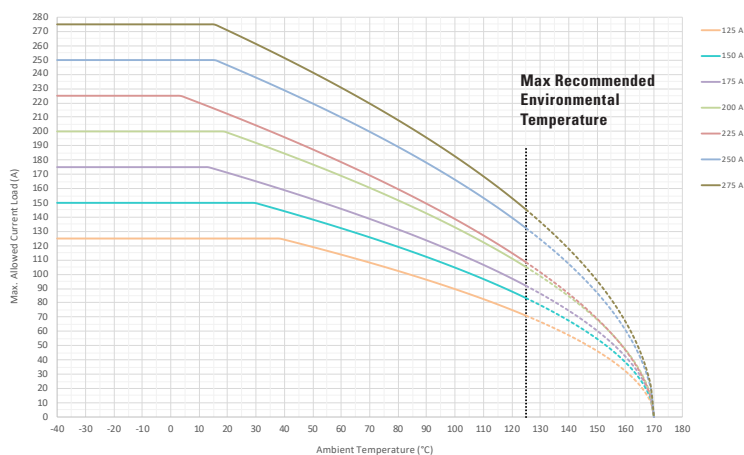


Time-Current Characteristics

% of Rating	Opening Time Min / Max (s)	
	125 A	150 A - 275 A
100	14,400 / ∞	14,400 / ∞
135	120 / 1 800	120 / 1 800
200	1 / 50	1 / 150
350	0.3 / 5	0.3 / 5
600	0.1 / 1	0.1 / 1

Typical Derating of Fuse Melting Element

Temperature Security Margin is 20%
Please contact Littelfuse[®] for Details Regarding Derating Test Set-Up.



Derating curves may change depending on the final condition of the application (terminals characteristics, wire size etc.).
Please ask Littelfuse[®] for more information.

Temperature Table

	max. allowed current load (A) at ambient temperature (typical derating)						
	-40°C	0°C	20°C	65°C	85°C	110°C	125°C
125 A	125	125	125	111	99	83	71
150 A	150	150	150	129	116	97	83
175 A	175	175	171	142	128	107	92
200 A	200	200	199	165	147	122	105
225 A	225	225	212	174	155	127	108
250 A	250	250	246	205	184	153	132
275 A	275	275	271	225	202	169	145