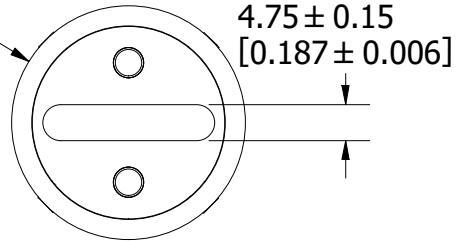
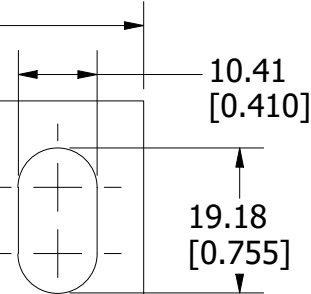


$\varnothing 30.94 \pm 0.381$
 $[\varnothing 1.218 \pm 0.015]$



22.73 ± 0.89
 $[0.895 \pm 0.035]$

10.41
 $[0.410]$

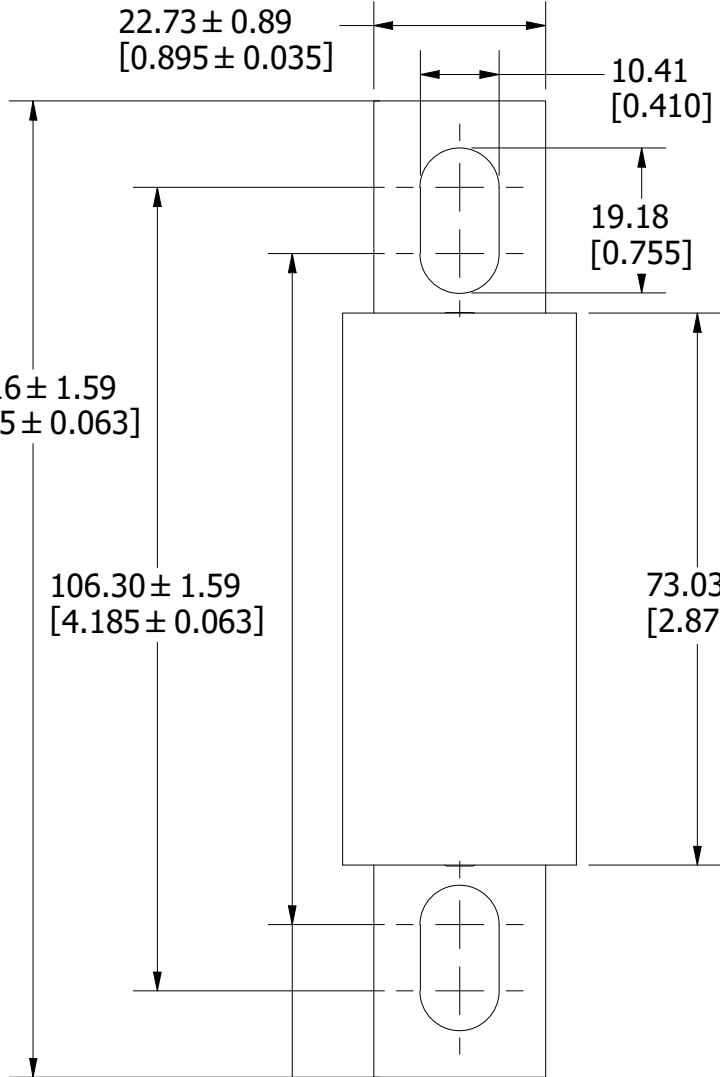


19.18
 $[0.755]$

129.16 ± 1.59
 $[5.085 \pm 0.063]$

106.30 ± 1.59
 $[4.185 \pm 0.063]$

73.03
 $[2.875]$



88.77 ± 1.59
 $[3.495 \pm 0.063]$

REVISION

REV	DATE	DESCRIPTION
A	7/18/23	526718GCP - RELEASE MRY

1	NO	COMPONENT NO	DESCRIPTION	QTY/M	U/M
---	----	--------------	-------------	-------	-----

BILL OF MATERIAL

<S>	CRITICAL CHARACTERISTIC FOR PART SAFETY/COMPLIANCE				
●	DENOTES CRITICAL CHARACTERISTICS.				
CPK	DENOTES CPK DIMENSIONS, -MINIMUM CPK VALUE				
⊠	DENOTES A CHARACTERISTIC THAT PROVIDES AN INDICATION OF PROCESS PERFORMANCE. PROCEDURE FOR MEASUREMENT AND TRACKING TO BE DEFINED IN LITTELFUSE INSPECTION INSTRUCTIONS.				
CP	DENOTES CP DIMENSIONS, -MINIMUM CP VALUE MUST BE WITHIN THE DIMENSIONAL LIMITATIONS SHOWN ON DRAWING AND INITIALLY LOCATED TO ALLOW FOR MAXIMUM TOOL LIFE.				A

MATL SPEC	FINISH			
-----------	--------	--	--	--

DRW JMoler	DATE 6/23/2023	SCALE NTS	FINISH GOOD WT GRAMS/PIECE	
---------------	-------------------	--------------	-------------------------------	--

UNLESS OTHERWISE SPECIFIED, DIMENSIONS ARE IN MILLIMETERS, DIMENSIONS IN BRACKETS [] ARE INCHES DIMENSIONING AND DO NOT INCLUDE PLATING. TOLERANCING TO BE INTERPRETED IN ACCORDANCE WITH ANSI Y14.5M-1994

3RD ANGLE PROJECTION				
-------------------------	--	--	--	--

TITLE L70QS 125-200A OUTLINE

<p>Littelfuse CHICAGO, ILLINOIS 60631</p>	REVISION	DRWG NO.	SHEET 1 OF 1
	A	OL-L70QS200	