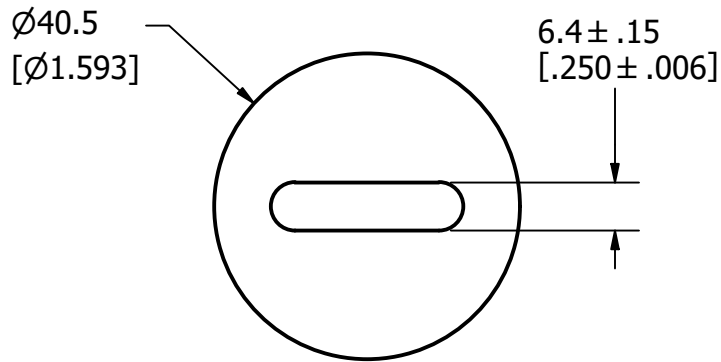
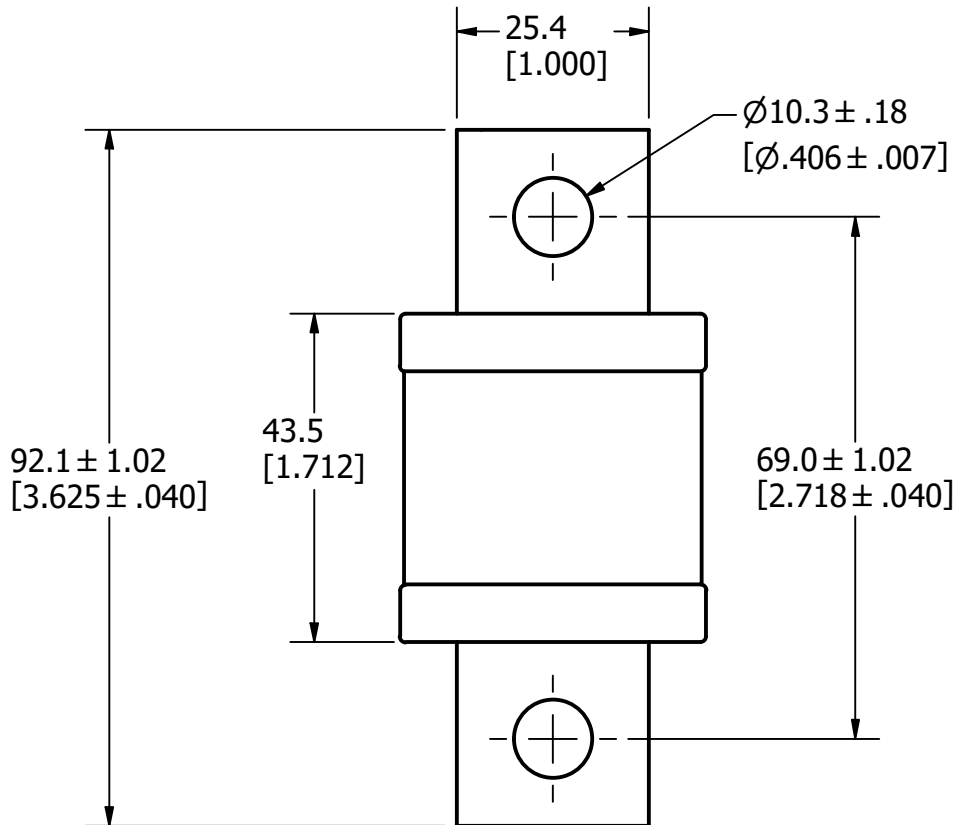


REVISION		
REV	DATE	DESCRIPTION
A	8/9/22	525545GCP - RELEASE MRY



APPROXIMATE SHIPPING WEIGHT: 1 FUSE / 0.44 LBS.



1	NO	COMPONENT NO	DESCRIPTION	QTY/M	U/M
---	----	--------------	-------------	-------	-----

### BILL OF MATERIAL

<S>	CRITICAL CHARACTERISTIC FOR PART SAFETY/COMPLIANCE
●	DENOTES CRITICAL CHARACTERISTICS.
CPK	DENOTES CPK DIMENSIONS, -MINIMUM CPK VALUE
⊠	DENOTES A CHARACTERISTIC THAT PROVIDES AN INDICATION OF PROCESS PERFORMANCE. PROCEDURE FOR MEASUREMENT AND TRACKING TO BE DEFINED IN LITTELFUSE INSPECTION INSTRUCTIONS.
CP	DENOTES CP DIMENSIONS, -MINIMUM CP VALUE MUST BE WITHIN THE DIMENSIONAL LIMITATIONS SHOWN ON DRAWING AND INITIALLY LOCATED TO ALLOW FOR MAXIMUM TOOL LIFE.

**A**

MATL SPEC	FINISH
-----------	--------

DRW	DATE	SCALE	FINISH GOOD WT
JMoler	8/4/2022	NTS	GRAMS/PIECE

UNLESS OTHERWISE SPECIFIED, DIMENSIONS ARE IN MILLIMETERS, DIMENSIONS IN BRACKETS [ ] ARE INCHES DIMENSIONING AND DO NOT INCLUDE PLATING. TOLERANCING TO BE INTERPRETED IN ACCORDANCE WITH ANSI Y14.5M-1994

3RD ANGLE PROJECTION

**TITLE** JLLS 225-400A OUTLINE

<b>Littelfuse</b> CHICAGO, ILLINOIS 60631	REVISION <b>A</b>	DRWG NO. <b>OL-JLLS400</b>	SHEET 1 OF 1
--	----------------------	-------------------------------	--------------