

# Class RK5 Fuses

## FLSR\_ID Series

600 V ac • Dual Element • Time Delay • 1/10–600 A • Indicating



## Description

The FLSR\_ID Indicator™ series offers a patented, state-of-the-art, solid-state design with maximum reliability and superior performance characteristics. The dual-element design ensures advanced short-circuit and overload protection. This series offers visual blown fuse indication at a glance. The use of indicator fuses reduces downtime and nuisance opening, increases safety, and saves money by cutting down on lost production time. These fuses are also available in a non-indicating version, see FLSR series.

## Features & Benefits

FEATURES	BENEFITS
<b>Excellent short-circuit protection</b>	Improves safety through faster response to fault currents
<b>Dual-element design</b>	Provides advanced short-circuit and overload protection
<b>Current-limiting</b>	Restricts fault currents to provide a high degree of circuit protection
<b>Visual blown fuse indication</b>	Indication window turns black allowing fast and easy identification of a blown fuse

## Applications

- Service entrance switches
- Transformers
- Switchboard mains and feeders
- Motor control central mains and motor branch circuits
- All general purpose circuits

## Specifications

<b>Voltage Rating</b>	Ac: 600 V Dc: 300 V
<b>Interrupting Ratings</b>	Ac: 200 kA rms symmetrical; 300 kA rms symmetrical (Littelfuse self-certified) Dc: 20 kA
<b>Ampere Range</b>	1/10–600 A
<b>Applicable Standards</b>	UL 248-12, Class RK5

# Class RK5 Fuses

## FLSR\_ID Series

### Certification & Compliance

<b>UL</b>	UL Listed (File: E81895)
<b>CSA</b>	CSA Certified (File: LR29862)

### Accessories

LFR60 series fuse holder

### Ordering Information

AMPERE	CATALOG NUMBER	PRODUCT MARKING	PACK QUANTITY	ORDERING NUMBER	UPC	AGENCY APPROVALS	
						UL	CSA
1/10	FLSR.100ID	FLSR 1/10ID	10	FLSR.100TXID	07945817011	•	•
15/100	FLSR.150ID	FLSR 15/100ID	10	FLSR.150TXID	07945817013	•	•
2/10	FLSR.200ID	FLSR 2/10ID	10	FLSR.200TXID	07945817018	•	•
1/4	FLSR.250ID	FLSR 1/4ID	10	FLSR.250TXID	07945817019	•	•
3/10	FLSR.300ID	FLSR 3/10ID	10	FLSR.300TXID	07945800092	•	•
4/10	FLSR.400ID	FLSR 4/10ID	10	FLSR.400TXID	07945817023	•	•
1/2	FLSR.500ID	FLSR 1/2ID	10	FLSR.500TXID	07945817024	•	•
6/10	FLSR.600ID	FLSR 6/10ID	10	FLSR.600TXID	07945800093	•	•
8/10	FLSR.800ID	FLSR 8/10ID	10	FLSR.800TXID	07945800094	•	•
1	FLSR001ID	FLSR 1ID	10	FLSR001.TXID	07945817031	•	•
1 1/6	FLSR1.12ID	FLSR 1 1/6ID	10	FLSR1.12TXID	07945817032	•	•
1 1/4	FLSR1.25ID	FLSR 1 1/4ID	10	FLSR1.25TXID	07945817034	•	•
1 1/10	FLSR01.4ID	FLSR 1 1/10ID	10	FLSR01.4TXID	07945817036	•	•
1 1/2	FLSR01.5ID	FLSR 1 1/2ID	10	FLSR01.5TXID	07945817037	•	•
1 5/10	FLSR01.6ID	FLSR 1 5/10ID	10	FLSR01.6TXID	07945817038	•	•
1 7/10	FLSR01.8ID	FLSR 1 7/10ID	10	FLSR01.8TXID	07945817040	•	•
2	FLSR002ID	FLSR 2ID	10	FLSR002.TXID	07945817041	•	•
2 1/4	FLSR2.25ID	FLSR 2 1/4ID	10	FLSR2.25TXID	07945817042	•	•
2 1/2	FLSR02.5ID	FLSR 2 1/2ID	10	FLSR02.5TXID	07945817043	•	•
2 3/10	FLSR02.8ID	FLSR 2 3/10ID	10	FLSR02.8TXID	07945817046	•	•
3	FLSR003ID	FLSR 3ID	10	FLSR003.TXID	07945817047	•	•
3 3/10	FLSR03.2ID	FLSR 3 3/10ID	10	FLSR03.2TXID	07945817049	•	•
3 1/2	FLSR03.5ID	FLSR 3 1/2ID	10	FLSR03.5TXID	07945817051	•	•
4	FLSR004ID	FLSR 4ID	10	FLSR004.TXID	07945817053	•	•
4 1/2	FLSR04.5ID	FLSR 4 1/2ID	10	FLSR04.5TXID	07945817054	•	•
5	FLSR005ID	FLSR 5ID	10	FLSR005.TXID	07945817055	•	•
5 5/10	FLSR05.6ID	FLSR 5 5/10ID	10	FLSR05.6TXID	07945817056	•	•
6	FLSR006ID	FLSR 6ID	10	FLSR006.TXID	07945817058	•	•
6 1/4	FLSR6.25ID	FLSR 6 1/4ID	10	FLSR6.25TXID	07945817059	•	•
7	FLSR007ID	FLSR 7ID	10	FLSR007.TXID	07945817061	•	•

# Class RK5 Fuses

## FLSR\_ID Series

### Ordering Information

AMPERE	CATALOG NUMBER	PRODUCT MARKING	PACK QUANTITY	ORDERING NUMBER	UPC	AGENCY APPROVALS	
						UL	CSA
7½	FLSR07.5ID	FLSR 7½ID	10	FLSR07.5TXID	07945817062	•	•
8	FLSR008ID	FLSR 8ID	10	FLSR008.TXID	07945817063	•	•
9	FLSR009ID	FLSR 9ID	10	FLSR009.TXID	07945817064	•	•
10	FLSR010ID	FLSR 10ID	10	FLSR010.TXID	07945817065	•	•
12	FLSR012ID	FLSR 12ID	10	FLSR012.TXID	07945817066	•	•
15	FLSR015ID	FLSR 15ID	10	FLSR015.TXID	07945817068	•	•
17½	FLSR17.5ID	FLSR 17½ID	10	FLSR17.5TXID	07945817069	•	•
20	FLSR020ID	FLSR 20ID	10	FLSR020.TXID	07945817071	•	•
25	FLSR025ID	FLSR 25ID	10	FLSR025.TXID	07945817072	•	•
30	FLSR030ID	FLSR 30ID	10	FLSR030.TXID	07945817073	•	•
35	FLSR035ID	FLSR 35ID	10	FLSR035.TXID	07945817074	•	•
40	FLSR040ID	FLSR 40ID	10	FLSR040.TXID	07945817075	•	•
45	FLSR045ID	FLSR 45ID	10	FLSR045.TXID	07945817076	•	•
50	FLSR050ID	FLSR 50ID	10	FLSR050.TXID	07945817077	•	•
60	FLSR060ID	FLSR 60ID	10	FLSR060.TXID	07945817078	•	•
70	FLSR070ID	FLSR 70ID	5	FLSR070.VXID	07945817079	•	•
75	FLSR075ID	FLSR 75ID	5	FLSR075.VXID	07945800217	•	•
80	FLSR080ID	FLSR 80ID	5	FLSR080.VXID	07945817080	•	•
90	FLSR090ID	FLSR 90ID	5	FLSR090.VXID	07945817081	•	•
100	FLSR100ID	FLSR 100ID	5	FLSR100.VXID	07945817082	•	•
110	FLSR110ID	FLSR 110ID	1	FLSR110.XXID	07945817083	•	•
125	FLSR125ID	FLSR 125ID	1	FLSR125.XXID	07945817084	•	•
150	FLSR150ID	FLSR 150ID	1	FLSR150.XXID	07945817086	•	•
175	FLSR175ID	FLSR 175ID	1	FLSR175.XXID	07945817087	•	•
200	FLSR200ID	FLSR 200ID	1	FLSR200.XXID	07945817088	•	•
225	FLSR225ID	FLSR 225ID	1	FLSR225.XXID	07945817089	•	•
250	FLSR250ID	FLSR 250ID	1	FLSR250.XXID	07945817090	•	•
300	FLSR300ID	FLSR 300ID	1	FLSR300.XXID	07945817091	•	•
350	FLSR350ID	FLSR 350ID	1	FLSR350.XXID	07945817092	•	•
400	FLSR400ID	FLSR 400ID	1	FLSR400.XXID	07945817093	•	•
450	FLSR450ID	FLSR 450ID	1	FLSR450.XXID	07945817095	•	•
500	FLSR500ID	FLSR 500ID	1	FLSR500.XXID	07945817096	•	•
600	FLSR600ID	FLSR 600ID	1	FLSR600.XXID	07945817098	•	•

# Class RK5 Fuses

## FLSR\_ID Series

### Dimensions

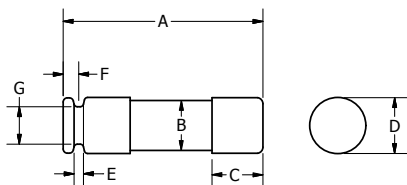


FIG. 1

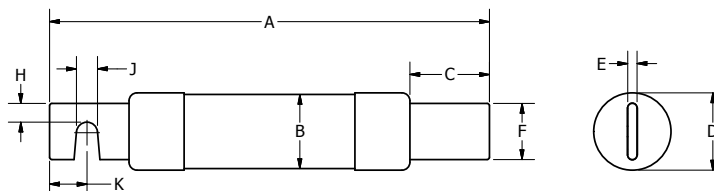


FIG. 2

AMPS	FIGURE NUMBER	DIMENSIONS INCHES (MM)									
		A	B	C	D	E	F	G	H	J	K
1/10-30	1	5 (127.0)	0.76 (19.2)	0.63 (15.9)	0.81 (20.7)	0.09 (2.4)	0.19 (4.7)	0.61 (15.5)	-	-	-
35-60	1	5.50 (139.7)	1 (25.1)	0.63 (15.9)	1.06 (27.0)	0.09 (2.4)	0.25 (6.4)	0.88 (22.2)	-	-	-
70-100	2	7.88 (200.0)	1.24 (31.5)	1.06 (27.0)	1.28 (32.6)	0.13 (3.2)	0.75 (19.1)	-	0.25 (6.4)	0.28 (7.1)	0.50 (12.7)
110-200	2	9.63 (244.5)	1.74 (44.2)	1.47 (37.3)	1.79 (45.4)	0.19 (4.8)	1.13 (28.6)	-	0.44 (11.1)	0.28 (7.1)	0.69 (17.5)
225-400	2	11.63 (295.3)	2.50 (63.1)	2 (50.8)	2.54 (64.6)	0.25 (6.4)	1.63 (41.3)	-	0.63 (15.9)	0.41 (10.3)	0.95 (24.0)
450-600	2	13.38 (339.7)	3 (76.0)	2.41 (61.1)	3.04 (77.3)	0.25 (6.5)	2 (50.8)	-	0.75 (19.1)	0.53 (13.5)	1.13 (28.6)

### Current-Limiting Effects of FLSR\_ID Fuses

SHORT CIRCUIT CURRENT*	APPARENT RMS SYMMETRICAL CURRENT FOR VARIOUS FUSE RATINGS					
	30 A	60 A	100 A	200 A	400 A	600 A
5,000	1,250	2,100	3,200	5,000	5,000	5,000
10,000	1,600	2,850	4,300	7,250	10,000	10,000
15,000	1,800	3,400	5,000	8,500	13,500	15,000
20,000	2,250	3,800	5,500	9,500	15,750	19,000
25,000	2,450	4,100	5,700	10,250	17,000	21,000
30,000	2,700	4,500	6,400	10,750	18,000	23,000
35,000	2,900	4,800	6,700	11,500	19,000	24,250
40,000	3,000	5,000	7,250	12,000	19,500	27,000
50,000	3,400	5,250	7,750	13,000	21,000	29,000
60,000	3,600	5,750	8,100	14,000	22,000	30,500
80,000	3,900	6,250	9,000	15,000	24,000	33,000
100,000	4,300	6,750	9,750	16,500	26,000	35,000
150,000	4,500	7,600	11,100	19,000	28,000	38,000
200,000	4,600	8,400	12,250	21,500	30,000	40,000

\*Prospective RMS Symmetrical Amperes Short-Circuit Current

Note: Data Derived from Peak Let-Thru Curves

**Disclaimer Notice** – Information furnished is believed to be accurate and reliable. However, users should independently evaluate the suitability of and test each product selected for their own applications. Littelfuse products are not designed for, and may not be used in, all applications. Read complete Disclaimer Notice at [www.littelfuse.com/product-disclaimer](http://www.littelfuse.com/product-disclaimer).