

# POWR-GARD® Fuses

## CNN\_E-U Series Lift Truck

80 V dc • Very Fast-Acting • 100 & 150 A



### Description

The CNN\_E-U fuses offer 3,000 A interrupting rating in the same physical size as the traditional CNN and CNN\_E series. The CNN\_E-U fuses are rated for applications up to 80 V dc and are considered very fast-acting.

### Features & Benefits

- Up to 80 V dc protection
- Up to 3,000 A interrupting rating
- Compact size saves space
- RoHS compliant and lead (Pb) free

### Applications

- Lift trucks
- Scissor lifts
- Pallet movers
- Low voltage battery powered equipment
- Data center

### Specifications

<b>Voltage Ratings</b>	80 V dc
<b>Ampere Ratings</b>	100 A, 150 A
<b>Max. Interrupting</b>	3,000 A
<b>Environmental</b>	RoHS Compliant, Lead (Pb) Free
<b>Country of Origin</b>	Mexico

### Certification & Compliance

cURus

cURus (File E71611)

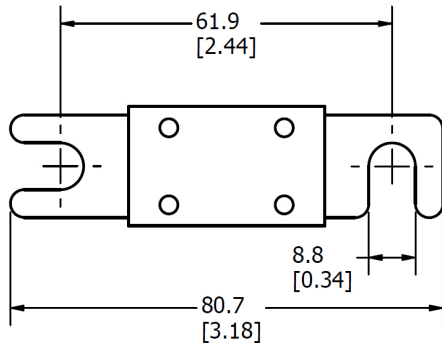
# POWR-GARD® Fuses

## CNN\_E-U Series Lift Truck

### Ordering Information

SERIES	AMP	CATALOG NUMBER	PRODUCT MARKING	PACKING QUANTITY	ORDERING NUMBER
CNN_E-U	100	CNN100E-U	CNN100E-U	100	0CNN100E.HXU
CNN_E-U	150	CNN150E-U	CNN150E-U	100	0CNN150E.HXU

### Dimensions Inches (mm)



**Disclaimer Notice** – Information furnished is believed to be accurate and reliable. However, users should independently evaluate the suitability of and test each product selected for their own applications. Littelfuse products are not designed for, and may not be used in, all applications. Read complete Disclaimer Notice at [www.littelfuse.com/product-disclaimer](http://www.littelfuse.com/product-disclaimer).