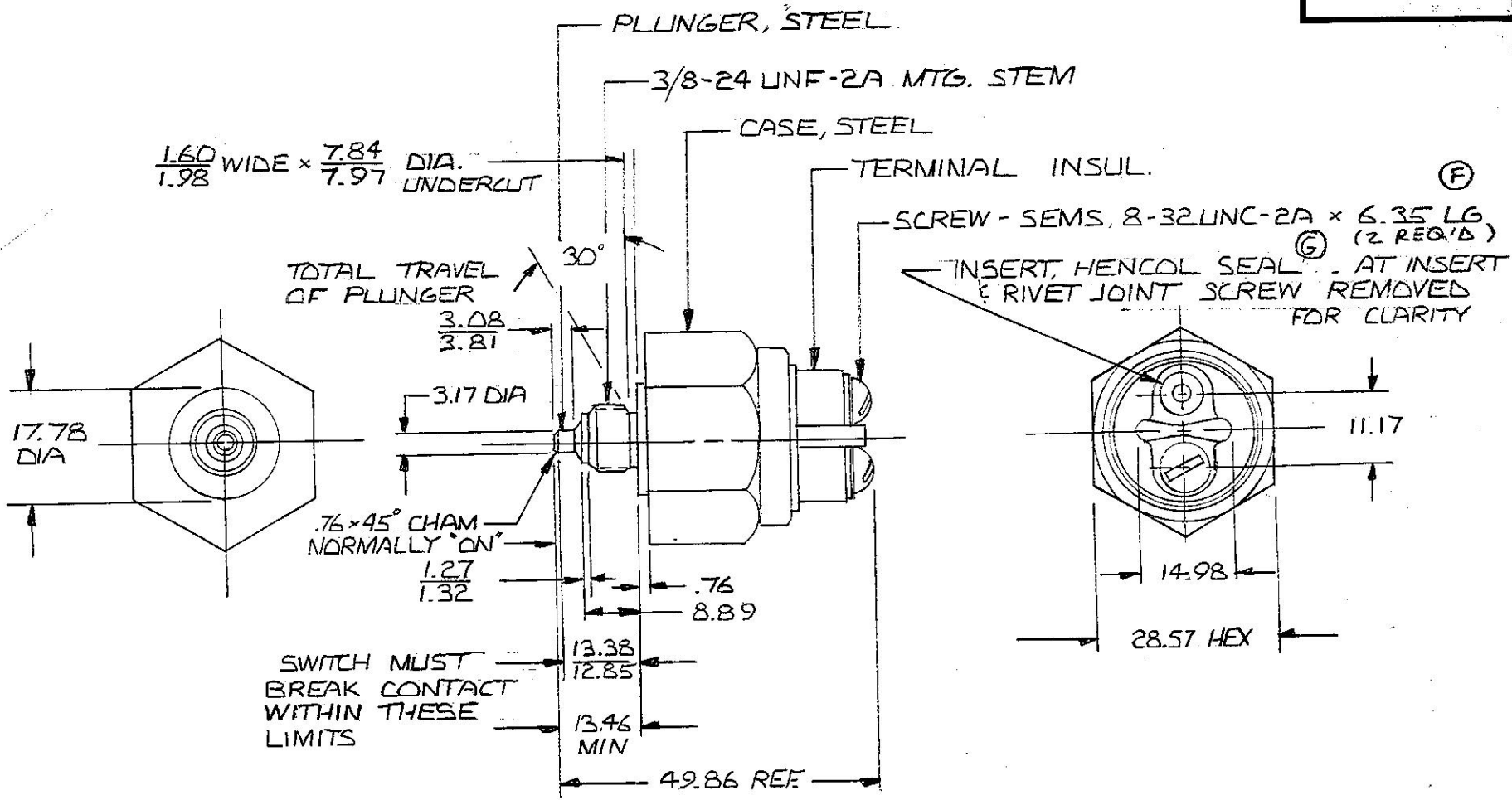


92120

MM IN

76	.030
27	.050
32	.052
60	.063
98	.078
08	.121
.81	.150
.35	.250
7.84	.309
.97	.314
.89	.350
1.17	.440
2.85	.506
3.38	.527
3.46	.530
4.98	.600
7.78	.700
8.57	.1125
19.86	1.963
3.17	.125

EX18582



CONFIDENTIAL PROPERTY OF COLE HERSEE

3 AMPS @ 24 VDC
5 AMPS @ 12 VDC

- NOTES =
1. ALL STEEL PARTS EITHER ZINC PLT W/ DICH DIP OR CAD PLT
 2. SILVER CONTACT SURFACES
 3. MAX ALLOWABLE TORQUE OF 10.85 N-m [8 FT-LBS] TO TIGHTEN SWITCH IN ITS ASSEMBLY

METRIC

DO NOT SCALE

LET.	WAS	DATE	BY	LET	WAS	DATE	BY	MATERIAL	DRAWN	CHECKED	APPR'D	SCALE	DATE DRAWN
								#	DRS	SJB		1:1	5-12-80
								FINISH					DATE BLUEPRINT
				G	ECN # 07333	8/17/01	SG	#					
				F	ECN 02226	5-7-02	ML	TOLERANCES					
				E	REDRAWN	6-6-88	JK	DECIMAL ±					
								METRIC ± .25					
<p>Cole Hersee Co. 25 OLD COLONY AVENUE, SOUTH BOSTON, MA, U.S.A. 02127</p>												INDICATOR LAMP SW	92120