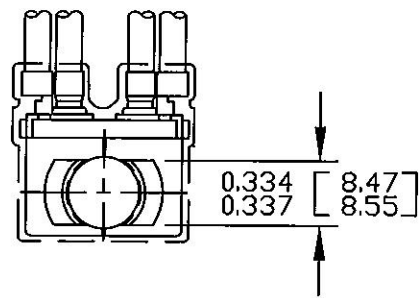
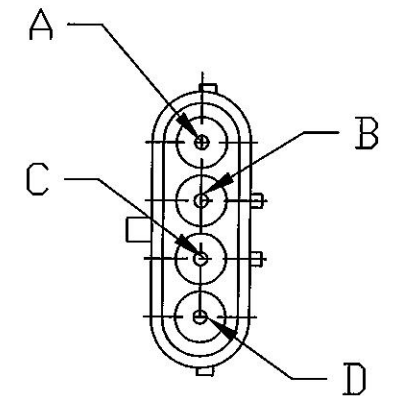


PACKARD CONNECTOR #12010974  
 PACKARD SEAL #12010293, 4 REQ'D  
 PACKARD TERM # 12089040, 4 REQ'D

WIRE LEADS, SXL, 16GA [1.0 mm sq],  
 WHITE, 6.500 [165.10 LONG, 2 REQ'D]

HENCOL SEAL #12, SHOWN DASHED

WIRE LEADS, SXL, 16GA [1.0 mm sq],  
 BLACK, 6.500 [165.10 LONG, 2 REQ'D]



0.477 [12.10]

0.226 [5.74]

□N 0.155 [3.94]

□N B1 & 1

1.187 [30.15]

0.815 [20.70]

□N B2 & 2

□N 0.140 MIN [3.55]

NOTES:

1. ALL STEEL PARTS PLATED
2. ALL DIMENSIONS ARE REFERENCE ONLY UNLESS NOTED OTHERWISE
3. □-RING BETWEEN PLUNGER & MOUNTING STEM
4. ALL HARDWARE ASSEMBLED

B2	D
2	C
B1	B
1	A
SWITCH LOCATION	CONNECTOR LOCATION

Revision Control Record				Rev.	Description of Change	ECN No.	Date	Tolerances	Unless otherwise specifically noted, the following are default tolerances:	PROPRIETARY INFORMATION	Special Characteristics:	Cole Hersee Co.	
Rev.	Description of Change	ECN No.	Date					2-places +/- 0.02"	3-places +/- 0.005"	Angular +/- 1°	<input checked="" type="checkbox"/> Critical Characteristic, relating to Safety and/or Regulatory Compliance <input checked="" type="checkbox"/> Significant Characteristic relating to Process Control <input checked="" type="checkbox"/> Control Dimension relating to Form-Fit - Function as defined by Cole Hersee Company and/or the Customer	20 Old Colony Ave., South Boston, MA, 02127 Phn: 617-268-2100 Web: www.colehersee.com	
B	REDRAWN BOM CHANGE	10357	10/13/10					Metric: Shown in [ ] refers to equivalent English Dim Tol				Description: SW, MOM, SPDT	
								"REF." or an Asterisk (*) = Non-Toleranced Reference Dimension, shown for clarification purposes only.				Drawing / Part No.:	91830-03
								NOTE: All tolerances are Non-Cumulative.				Current Rev.:	B
								FORM CHT-6 (2/07)	Used On or Ref.: EX27316	Scale: 1:1	Drawn BY: MA	Date Drawn: 8/6/00	Pg. 1 of 1