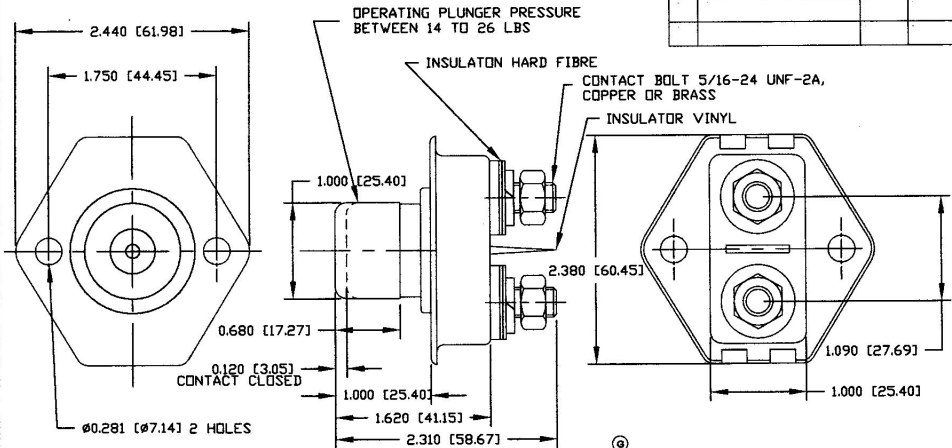


Revision Control Record

Rev.	Description of Change	ECN No.	Date
G	NOTE CHANGE	04107	03/25/04



- © NOTES:
 1. ALL STEEL PARTS PLATED
 2. 35 AMPS @ 12 VDC

Tolerances: Unless otherwise specifically noted, the following are default tolerances:
 * 2-place Decimal Dimensions $\pm .02"$
 * 3-place Decimal Dimensions $\pm .005"$
 * Angular Dimensions ± 1.0 Deg.
 * Metric: Refer to equivalent English Dimensional Tolerance
 * >>> NOTE: All tolerances are Non-Cumulative. <<<

Dimensional Units: All dimensions are expressed in inches except those shown in brackets (xxx) are expressed in millimeters

WPC - or an Asterisk (*) = Non-Toleranced Reference Dimension, shown for clarification purposes only.

PROPRIETARY INFORMATION: This Engineering Drawing, and the information contained herein, is proprietary to Cole Hersee Company and may not be disclosed, re-produced, or in any other way transferred or communicated to any other party without the express written consent of an authorized representative of Cole Hersee Company.

REVISION CONTROL: It is the responsibility of the individual using / referencing this drawing to ensure that the latest design revision level agrees with the revision level of the Controlled Document (Master Drawing). This is a NON-CONTROLLED DOCUMENT unless otherwise specifically noted.

DO NOT SCALE: Dimensional variation may occur during printing / reproduction.

Special Characteristics:



Critical Characteristics, relating to Safety and/or Regulatory Compliance



Significant Characteristics relating to Process Control (SPC)



Key Characteristics relating to Form - Fit - Function as defined by Cole Hersee Company and/or the Customer

Note that the identification of any Characteristics as being "Special" does not alter the requirement that ALL specified dimensions & tolerances must be met.

Cole Hersee Co.



20 Old Colony Ave., South Boston, MA, 02127
 Phone 617-288-2100 Web: www.colehersee.com

Description:

SWITCH, STARTER

Drawing / Part No.:

9183

Current Rev.:

G

Used On
or Ref.:

Scale: **1:1**

Drawn by: **EA**

Date Drawn: **08/10/56**

Responsible Engineer:

Pg. 1 of 1