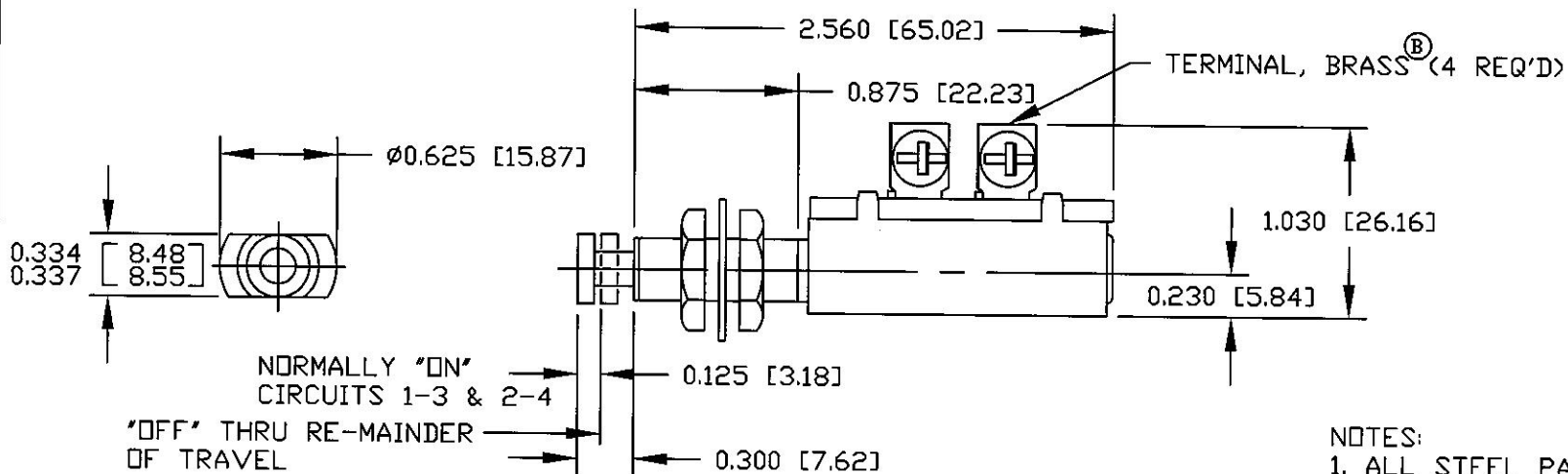


Revision Control Record			
Rev.	Description of Change	ECN No.	Date
B	WAS STEEL	09002	01/16/09



NOTES:  
1. ALL STEEL PARTS PLATED

**Tolerances** Unless otherwise specifically noted, the following are default tolerances;

**2-places**  $\pm 0.02''$     **3-places**  $\pm 0.005''$     **Angular**  $\pm 1'$

Metric: Shown in [ ] refers to equivalent English Dim Tol

"REF." or an Asterisk (\*) = Non-Toleranced Reference Dimension, shown for clarification purposes only.

NOTE: All tolerances are Non-Cumulative.

**PROPRIETARY INFORMATION**  
This Engineering Drawing, and the information contained herein, is proprietary to Cole Hersee Company and may not be disclosed, re-produced, or in any other way transferred or communicated to any other party without the express written consent of an authorized representative of Cole Hersee Company.

**Special Characteristics:**

- CC Critical Characteristic, relating to Safety and/or Regulatory Compliance
- X Significant Characteristic relating to Process Control
- KC Control Dimension relating to Form - Fit - Function as defined by Cole Hersee Company and/or the Customer

**Cole Hersee Co.**  
20 Old Colony Ave., South Boston, MA, 02127  
Phn: 617-268-2100 Web: www.colehersee.com

**Description:**  
**DPST MOM, SW**

**Drawing / Part No.:** **9118-04**

**Current Rev.:** **B**