

9115

TERMINAL INSULATOR-BLITE

5410 SCREW 8-32 THD-STEEL

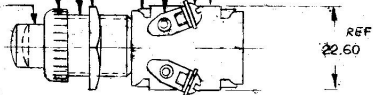
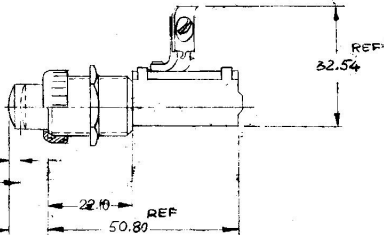
3017-8 LOCKWASHER-STEEL
② TERMINAL, BRASS.
CASE STEEL

B507 PAL NUT, STEEL

BUSHING 5/8-32-UN-2A ALUMINUM

8304 FACE NUT-BRASS CHROME PLT

PLUNGER BUTTON BRASS ROLLED CHROME

REF
22.60REF
32.54

"NORMALLY ON"

OFF WHEN DERESSED 3.05
AND THRU REMAINDER OF
TRAVEL

±1.01

22.10

REF
50.80


NOTE:

② 1. ALL STEEL PARTS PLATED

METRIC

Confidential Property of Cole Hersee

DO NOT SCALE

LET.	WAS	DATE	BY	LET.	WAS	DATE	BY	MATERIAL	DRAWN	CHECKED	APPROV'D	SCALE	DATE DRAWN
								NOTED	MW	LPG	SA	1:1	2-12-87
								FINISH					DATE BLUEPRINT
								NOTE 1	 Cole Hersee Co. 1000 North 10th Street, Minneapolis, MN 55417				
								TOLERANCES					
								DECIMAL ±	STARTER SWITCH				9115
								METRIC ±					