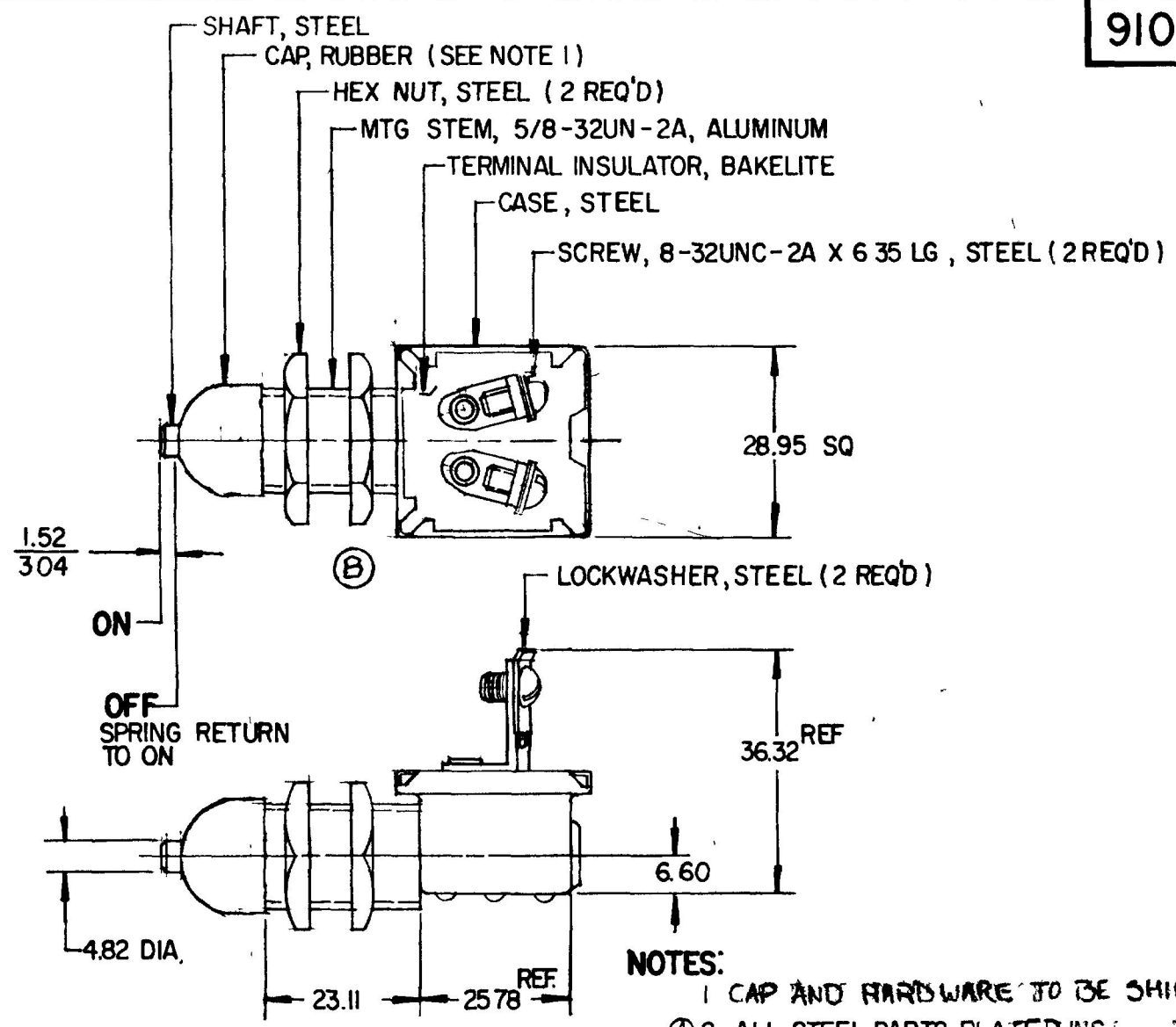


MM	IN
0.25	.010
1.52	.060
3.04	.120
4.82	.190
6.35	.250
6.60	.260
23.11	.910
25.78	1.015
28.95	1.140
36.32	1.430

91042-05



NPM 8-3-79  
EX 18195

METRIC

DO NOT SCALE

REV	WAS	DATE	BY	LET	WAS	DATE	BY	MATERIAL	DRAWN	CHECKED	APPR'D	SCALE	91042 EXCEPT WITH SCREW TERMINALS	DATE DRAWN
								#	JAV	FY 8-2-79		FULL		7-30-79
				C	ECN # 99173	5/10/98	REF	FINISH	 Cole Hersee Co. <small>20 OLD COLONY AVENUE SOUTH BOSTON MA U.S.A. 02127</small>					DATE BLUEPRINT
				B	ECN 27164 ADDED CUTOUT	1-21-98	JMP	#						
				A	CAP. K ZINC 125239	12/22/92	JH	TOLERANCES	<b>MOMENTARY SWITCH</b>					<b>91042-05</b>
					ISSUED	8-3-79	LY	DECIMAL ± METRIC ±0.25						

CH-188(4-78)