

9055-02

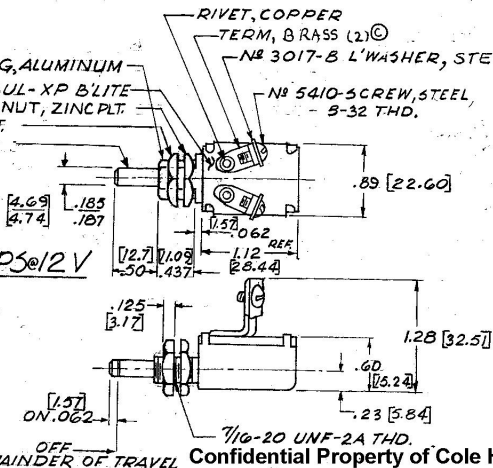
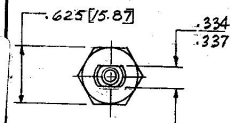
NOTE:

ⓑ ALL STEEL PARTS PLATED

#83588 BUSHING, ALUMINUM
 TERM. INSUL-XP B'LITE
 Ⓐ HEX NUT ZINC PLT.
 Ⓐ PAL NUT, ZINC PLT.
 SHAFT-STEEL

RIVET, COPPER
 TERM, BRASS (2) Ⓒ
 № 3017-B L'WASHER, STEEL
 № 5410-SCREW, STEEL,
 - 5-32 THD.

RATING 30 AMPS @ 12 V



Confidential Property of Cole Hersee

DO NOT SCALE

LET	WAS	DATE	BY	LET	WAS	DATE	BY	MATERIAL	DRAWN	CHECKED	APPROV'D.	SCALE	DATE DRAWN	
									SB	9fd	2 JAN 74	1=1	12-28-73	
				C	TERM	02/02	1/19/02	AA					DATE BLUEPRINT	
				B	22049	25239	11/13/92	54						
				A	REV/20975	10-9-80								
					ISSUED	1-14-74							9055-02	
TOLERANCES FRACTIONAL ± DECIMAL ±									COLE-HERSEE COMPANY BOSTON, MASS. 02127, U.S.A.				DOOR SWITCH	9055-02

N.R.M. 1-9-74
#9-31-009

COLE-HERSEE CO.