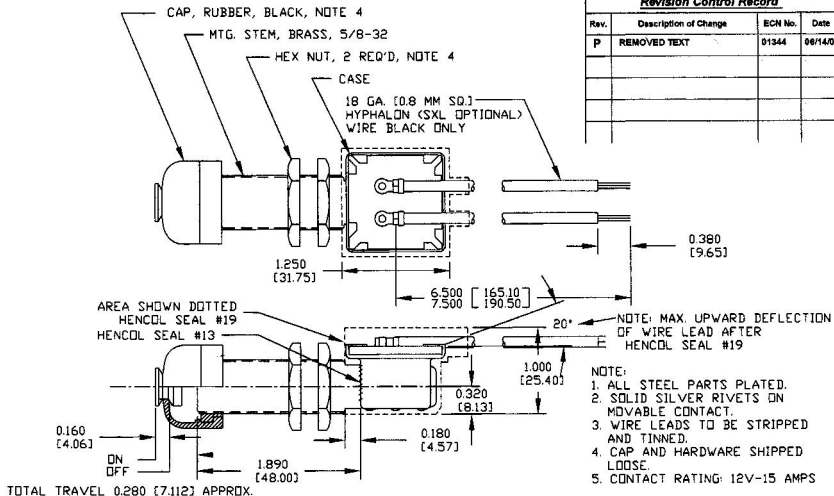


Revision Control Record

Rev.	Description of Change	ECN No.	Date
P	REMOVED TEXT	01344	08/14/01



Tolerances: Unless otherwise specifically noted, the following are default tolerances:
 • 3-place Decimal Dimensions $\pm .015^{\circ}$
 • 2-place Decimal Dimensions $\pm .030^{\circ}$
 • Angular Dimensions $\pm 1.0^{\circ}$
 • Metric: Refer to equivalent English Dimension Tolerances
 >>> NOTE: All tolerances are Non-Contactive, unless otherwise specified.

Dimensional Units: All dimensions are expressed in inches except those shown in brackets (XX) are expressed in millimeters.

"REF." at end of dimension = Non-Tolerance Reference Dimension, shown for identification purposes only.

PROPRIETARY INFORMATION: This Engineering Drawing, and the information contained herein, is proprietary to Cole Hersee Company and may not be disclosed, reproduced, or in any other way transferred or communicated to any other party without the express written consent of an authorized representative of Cole Hersee Company.

DESIGN CONTROL: It is the responsibility of the individual using/interpreting this drawing to ensure that the noted design revision have agreed with the revision level of the Controlled Document (Control Drawing). This is a NON-CONTROLLED DOCUMENT unless otherwise specifically noted.

DO NOT SCALE: Dimensional relation may occur during printing/reproduction.

Key for Special Characteristics:

- Critical Characteristic, relating to Safety and/or Regulatory Compliance
 - Significant Characteristic relating to Process Control (SPC)
 - Control Dimension relating to Form - Fit - Function as defined by Cole Hersee Company and/or the Customer
- (Note that the identification of any Characteristics as being "Special" does not alter the requirement that ALL specified dimensions & tolerances must be met.)

Cole Hersee Co.

20 Old Colony Ave., South Boston, MA, 02127
 Phone: 617-268-2100 Web: www.colehersee.com



Description: **MOMENTARY SWITCH NC**

Drawing/Part No.: **90043-07**

Current Rev.: **P**

Used On: **BAZIC 90043-06 ONLY**
 or Part: **NORMALLY "ON"**

Scale: **1:1**

Drawn By: **JWH**

Date Drawn: **11/28/74**

Responsible Engineer: **N/A**

Page: **1 of 1**