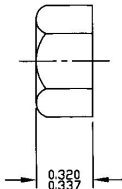
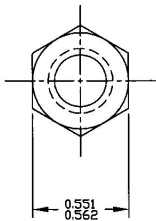


3/8-16, UNC-2B



Revision Control Record			
Rev.	Description of Change	ECN No.	Date
G	FINISH	00796	11/7/00

- NOTES:
 1. MATERIAL: BRASS
 2. FINISH: BRIGHT DIP
 C OF C REQUIRED FOR EACH SHIPMENT

Tolerances: Unless otherwise specifically noted, the following are default tolerances:

- * 2-place Decimal Dimensions $\pm .02^\circ$
- * 3-place Decimal Dimensions $\pm .005^\circ$
- * Angular Dimensions $\pm 1.5 \text{ Deg}$
- * Metric: Refer to equivalent English Dimension Tolerance
- >>> NOTE: *All tolerances are Non-Cumulative.* <<<

Dimensional Units: All dimensions are expressed in inches except those shown in brackets (xxx) are expressed in millimeters

"REF." or an Arrow to a Callout: Non-Toleranced Reference Dimension, shown for clarificative purposes only.

PROPRIETARY INFORMATION: This Engineering Drawing, and the information contained herein, is proprietary to Cole Hersee Company and may not be disclosed, re-produced, or in any other way transferred or communicated to any other party without the express written consent of an authorized representative of Cole Hersee Company.

DESIGN CONTROL: It is the responsibility of the individual using/ referring this drawing to ensure that the noted design revision level agrees with the revision level of the Controlled Document (Master Drawing). This is a NON-CONTROLLED DOCUMENT unless otherwise specifically noted.

DO NOT SCALE: Dimensional variation may occur during printing/ reproduction.

Key for Special Characteristics:

- Critical Characteristic, relating to Safety and/or Regulatory Compliance
- Significant Characteristic relating to Process Control (SPC)
- Control Dimension relating to Form - Fit - Function as defined by Cole Hersee Company and/or the Customer

(Note that the Identification of any Characteristics as being "Special" does not alter the requirement that ALL specified dimensions & tolerances must be met.)



Cole Hersee Co.

20 Old Colony Ave., South Boston, MA, 02127
 Phn: 617-268-2100 Web: www.colehersee.com

Description: NUT, HEX 3/8-16

Drawing / Part No.:

84000

Current Rev.

G

Used On: Scale: **2:1** Drawn **RB** Date: **9/18/57** Responsible **N/A** Engineer: **Pg. 1 of 1**
 or Ref.: By: Drawn: