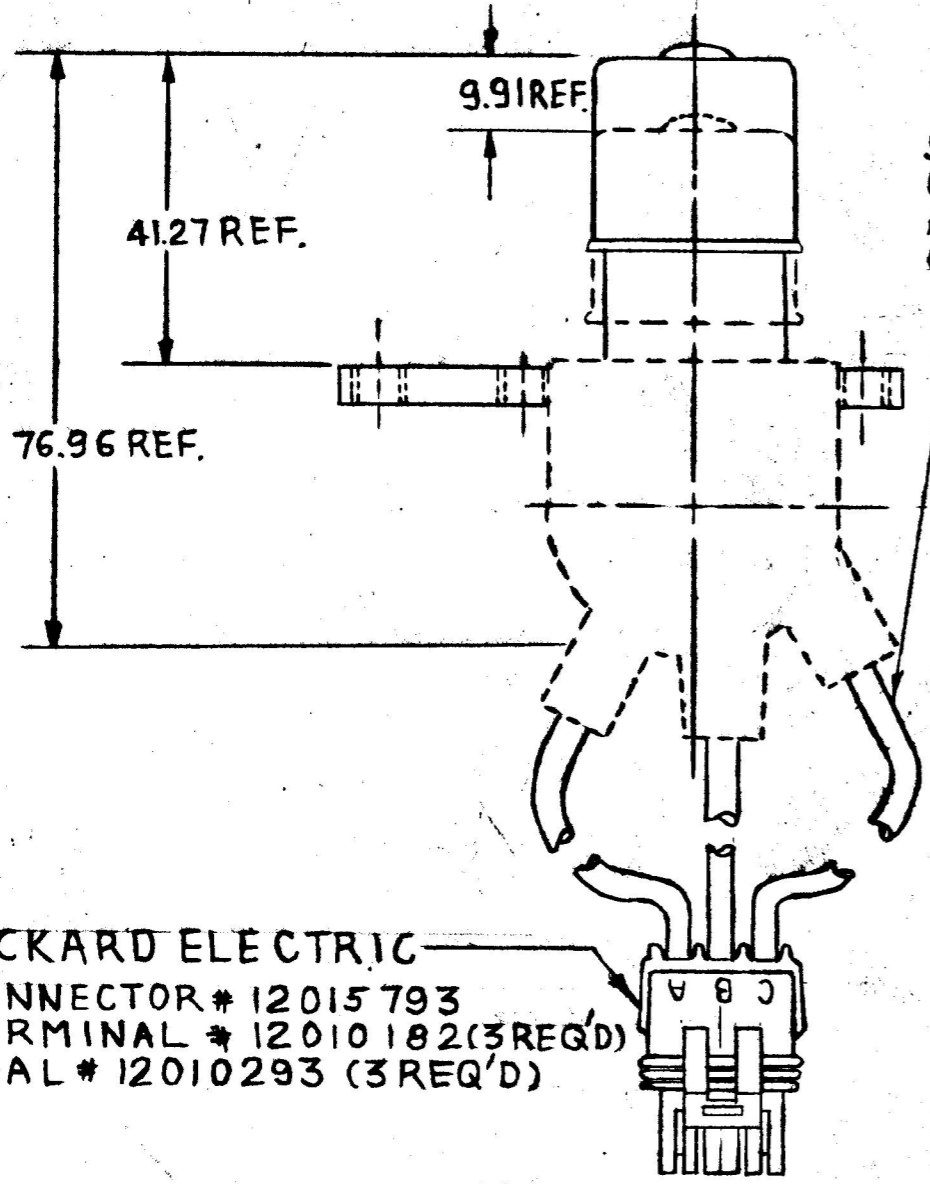
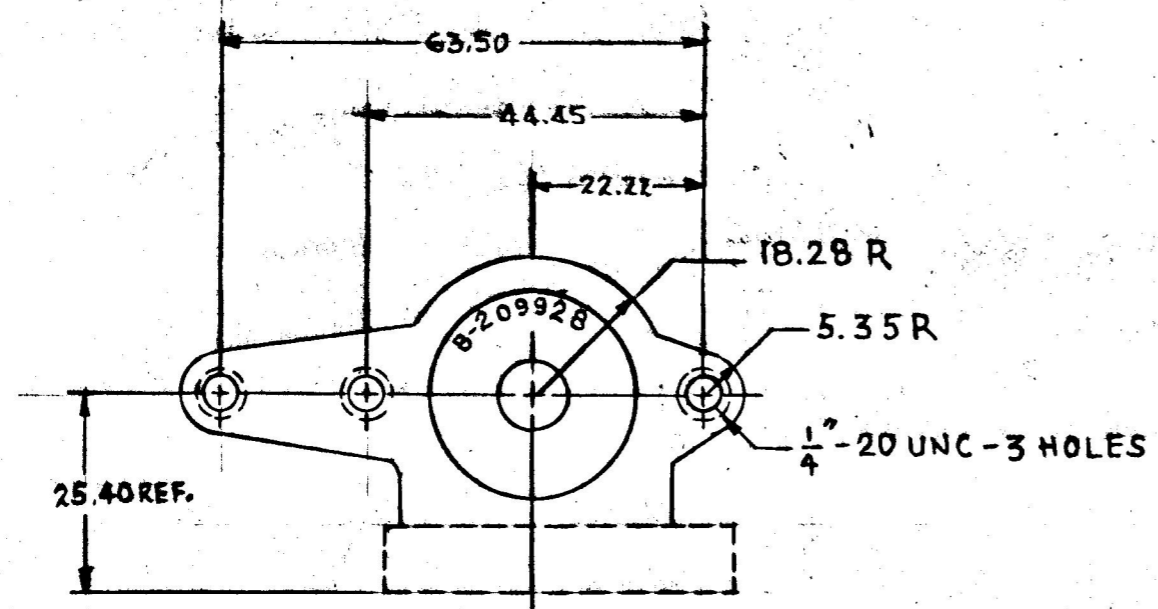


MM IN  
 5.35 211  
 9.91 390  
 18.28 759  
 27.22 875  
 40.40 1000  
 50.97 1062  
 63.27 1625  
 76.45 1750  
 90.50 2500  
 106.96 3148  
 126.05 5.750

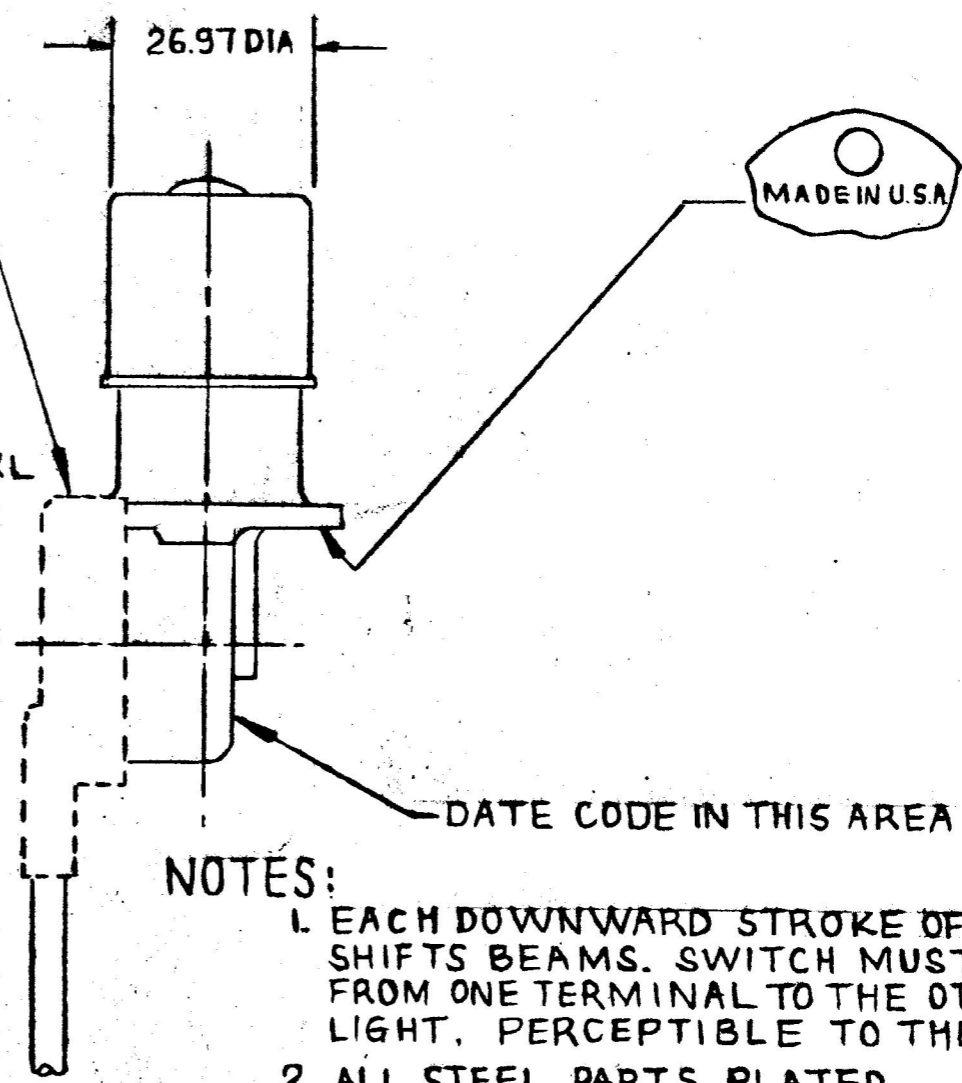
COLE-HERSEE CO.  
 EX 23896



PACKARD ELECTRIC  
 CONNECTOR # 12015793  
 TERMINAL # 12010182 (3 REQ'D)  
 SEAL # 12010293 (3 REQ'D)

HENCOL SEAL # 12  
 SHOWN DOTTED. ALL  
 COMPONENTS WITHIN  
 AREAS SHOWN TO BE  
 COMPLETELY COVERED.

WIRE LEADS 1.0 mm<sup>2</sup> GXL  
 APPROX. 146.05 LONG  
 (3 REQ'D) (A)



NOTES:

1. EACH DOWNWARD STROKE OF THE PLUNGER SHIFTS BEAMS. SWITCH MUST CHANGE CIRCUIT FROM ONE TERMINAL TO THE OTHER W/OUT LOSS OF LIGHT, PERCEPTIBLE TO THE EYE.
2. ALL STEEL PARTS PLATED.

METRIC

LET.	WAS	DATE	BY	LET.	WAS	DATE	BY	MATERIAL	DRAWN	CHECKED	APPRV'D.	SCALE	DO NOT SCALE
								---	BL	AF			DATE DRAWN 4-2-90
								FINISH ---	Cole Hersee Co. <small>20 OLD COLONY AVENUE SOUTH BOSTON, MA. U.S.A. 02127</small>				DATE BLUEPRINT
								TOLERANCES DECIMAL ± METRIC ±					DIMMER SWITCH
				A	ECN # 99041	2-10-99	MCS						
					ISSUED	4-12-90	AF						