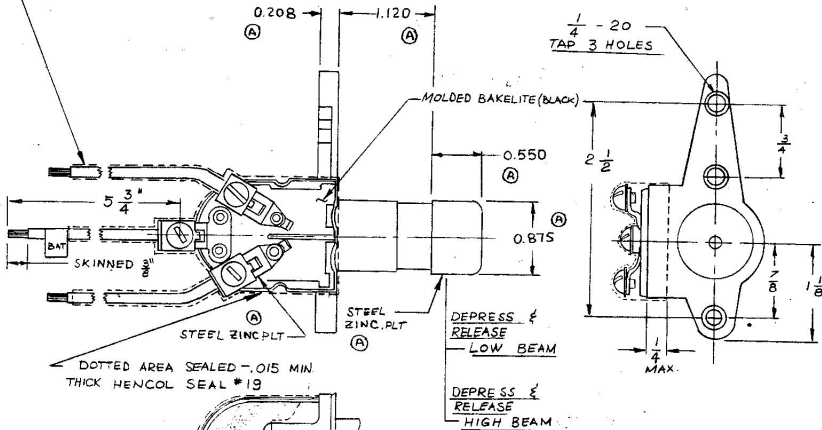


7700

#16 GA. BLACK PLASTIC COVERED WIRE



BOTTOM VIEW OF SWITCH
SHOWING AREA SEALED

Confidential Property of Cole Hersee

DO NOT SCALE

LET.	WAS	DATE	BY	LET	WAS	DATE	BY	MATERIAL	DRAWN	CHECKED	APPR'D.	SCALE	DATE DRAWN
								NOTED	MK	<i>[Signature]</i>		1:1	10-6-86
								FINISH					DATE BLUEPRINT
				A	ECN 02169	4/23/02	NL	TOLERANCES	 Cole Hersee Co. <small>MANUFACTURED BY COLE HERSEE CO. IN U.S.A.</small>				
					REDRAWN	10-6-86	ZU	DECIMAL ± 0.15 METRIC ± 0.10					DIMMER SWITCH