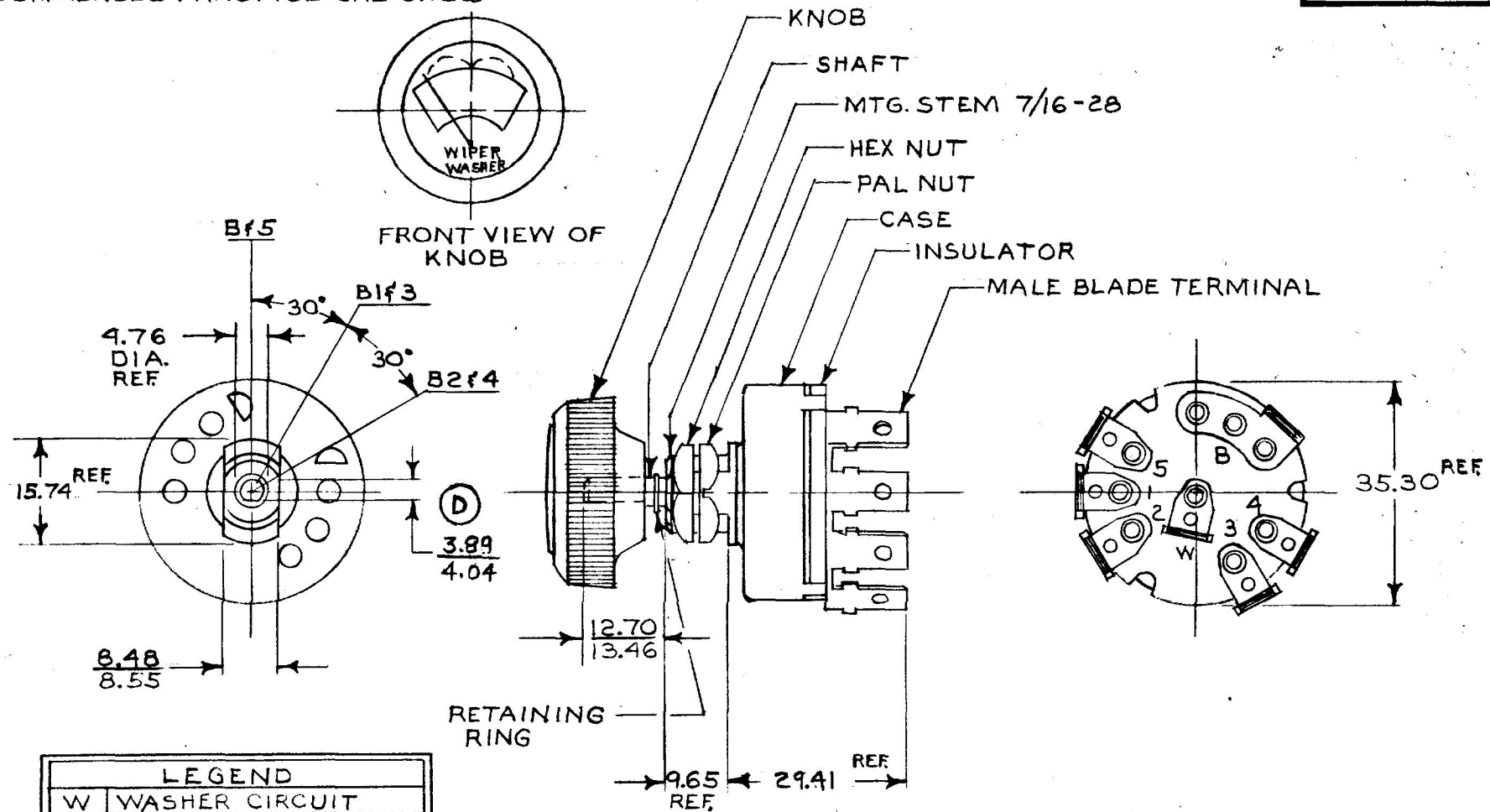


75228

MM IN

3.89	.153
4.04	.159
4.76	.187
8.48	.334
8.55	.337
9.65	.380
12.70	.500
13.46	.530
15.74	.620
29.41	1.158
35.30	1.390

APPLICABLE SAE STANDARD OR RECOMMENDED PRACTICE SAE J112



LEGEND	
W	WASHER CIRCUIT
B	BATTERY
1	WIPER 1 LOW SPEED
3	WIPER 2 LOW SPEED
2	WIPER 1 HI SPEED
4	WIPER 2 HI SPEED
5	PARK

METRIC

- NOTES:
1. PUSH SHAFT TO ACTIVATE WASHER CIRCUIT.
 2. CURRENT RATING 10 AMP @ 12 VOLT.
 3. ALL STEEL PARTS PLATED.

DO NOT SCALE

DET.	WAS	DATE	BY	LET	WAS	DATE	BY	MATERIAL	DRAWN	CHECKED	APPRV'D	SCALE	DATE DRAWN
								<i>TK</i>	EA	T.N.		1:1	2-13-78
								FINISH	 20 OLD COLONY AVENUE, SOUTH BOSTON MA, U.S.A. 02127				DATE BLUEPRINT
								TOLERANCES					SWITCH, WINDSHIELD WIPER & WASHER
					C	REDRAWN	12-14-89	<i>TK</i>	DECIMAL ±				
									METRIC ±				

CH-188(4-78)