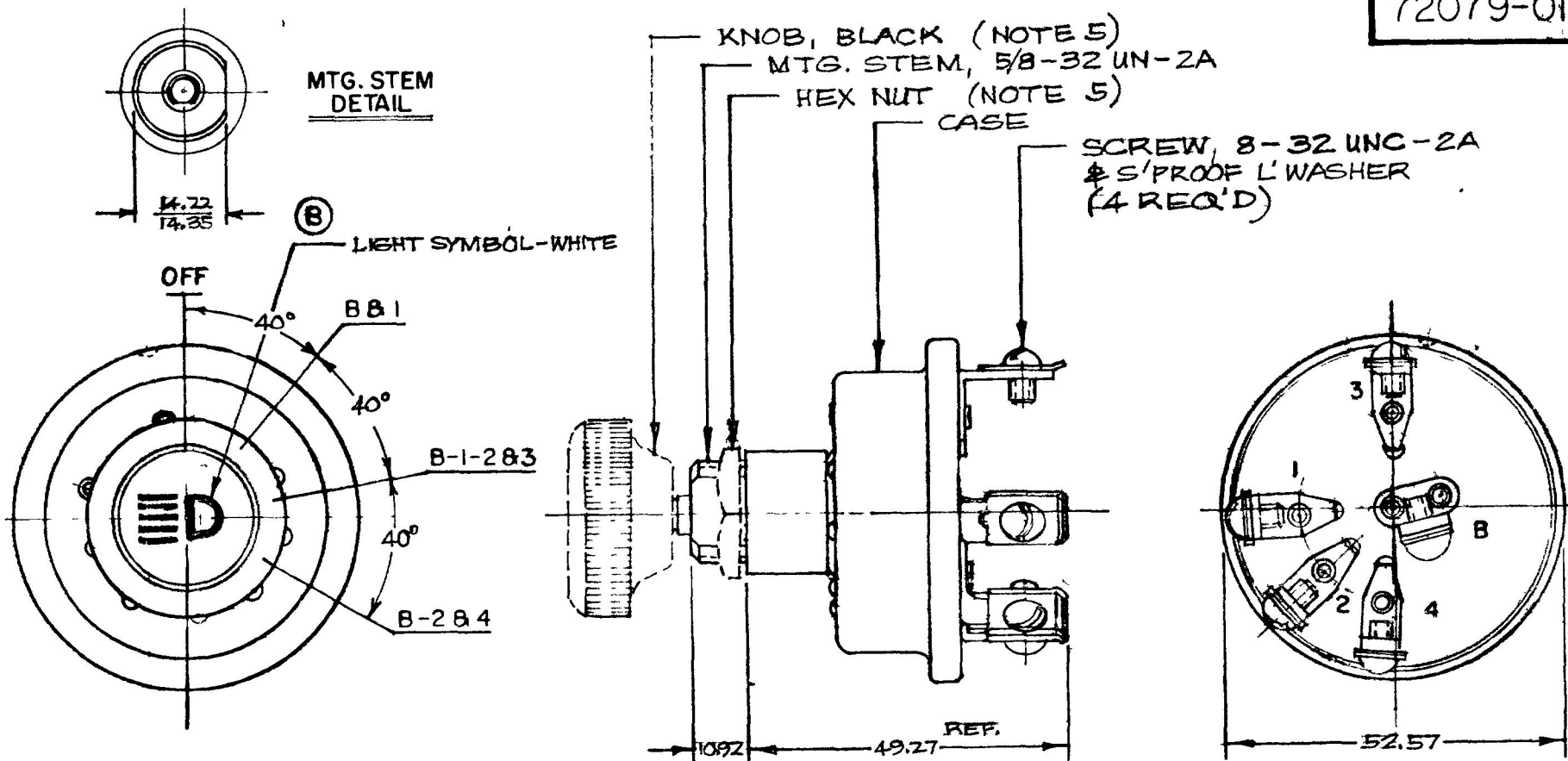


MM IN

25 .010
 10.92 430
 14.22 560
 14.35 580
 52.57 2.070
 68.58 2.700

NPM 7-15-80
 EX-18700

72079-01



NOTE :

1. O-RING SEALED AT MTG. STEM & MTG. STEM SEAT
2. SILVERED CONTACT SURFACES
3. LINEN MELAMINE LINER
4. ALL STEEL PARTS PLATED
5. KNOB & HEX NUT SHIPPED LOOSE

LEGEND	
B	BATTERY
1	HAZARD WARNING
2	HEADLIGHTS & DISHLIGHTS
3	TAIL LIGHTS
4	WORKING LIGHTS

DO NOT SCALE

LET	WAS	DATE	BY	LET	WAS	DATE	BY	MATERIAL	DRAWN	CHECKED	APPRV'D	SCALE	72079, LESS CIRCUIT BREAKER	DATE DRAWN
								#	RMT	721-80		1:1		7-15-80
								FINISH						DATE BLUEPRINT
				B	ECN 24526	10/5/80	BL							
				A	REVISED 2/15/83 CIRCUIT TERM.	9/29/80	EA	TOLERANCES						
					ISSUED	7/24/80	Y	DECIMAL ±						
								METRIC ± .25						
 Cole Hersee Co. <small>20 OLD COLONY AVENUE SOUTH BOSTON MA U.S.A. 02127</small>													HEADLAMP SWITCH	72079-01

CH-188(4-78)