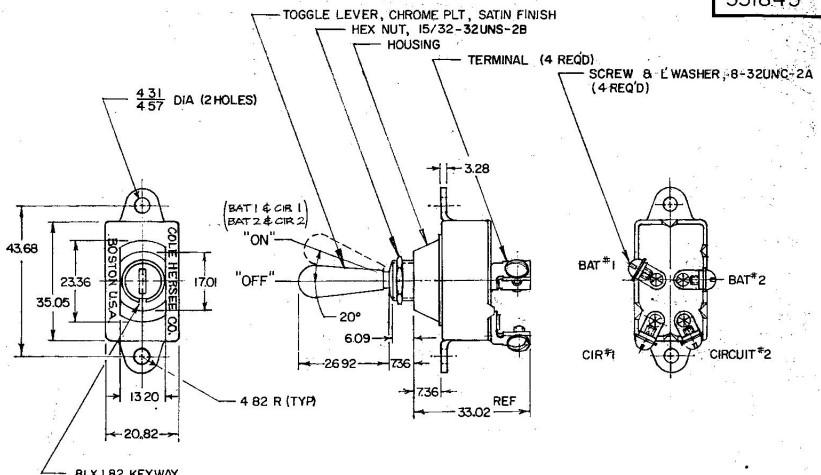


MM IN  
 .25 .010  
 .281 .011  
 .312 .012  
 .343 .013  
 .375 .014  
 .406 .015  
 .437 .016  
 .468 .017  
 .500 .018  
 .531 .019  
 .562 .020  
 .593 .021  
 .625 .022  
 .656 .023  
 .687 .024  
 .718 .025  
 .750 .026  
 .781 .027  
 .812 .028  
 .843 .029  
 .875 .030  
 .906 .031  
 .937 .032  
 .968 .033  
 1.000 .034  
 1.031 .035  
 1.062 .036  
 1.093 .037  
 1.125 .038  
 1.156 .039  
 1.187 .040  
 1.218 .041  
 1.250 .042  
 1.281 .043  
 1.312 .044  
 1.343 .045  
 1.375 .046  
 1.406 .047  
 1.437 .048  
 1.468 .049  
 1.500 .050

551845



NOTE  
 1 SILVERED CONTACTS  
 2 EXTRA HEAVY DUTY  
 3. HEX NUT & SCREWS TO BE BAGGED  
 DO NOT SCALE

METRIC

Confidential property of Cole Hersee

LET.	WAS	DATE	BY	LET	WAS	DATE	BY	MATERIAL	DRAWN	CHECKED	APPROVD.	SCALE	DATE DRAWN
								— # —	RZ	6/12/80		1:1	5-5-85
								FINISH	 Cole Hersee Co. <small>BUILDING EQUIPMENT DIVISION, BOSTON, MASS. U.S.A.</small>				DATE BLUEPRINT
							— # —						
								TOLERANCES	DP-ST TOGGLE SWITCH				551845
								DECIMAL ±					
								METRIC ± .25					