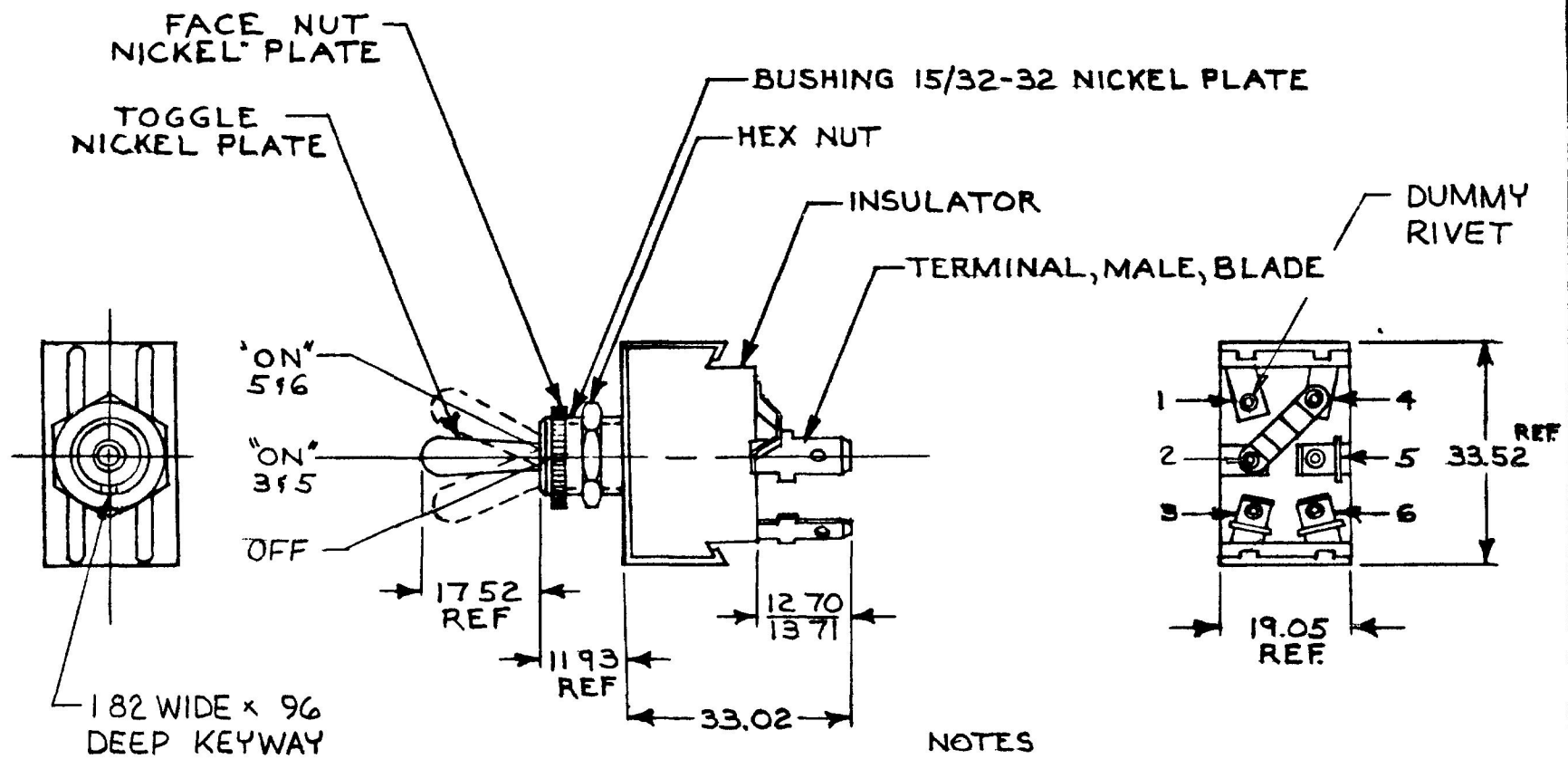


55093

MM IN
 .96 .038
 1.82 .072
 11.93 .470
 12.70 .500
 13.71 .540
 17.52 .690
 19.05 .750
 33.02 1.300
 33.52 1.320

EX 22308



- NOTES
- 1 HEAVY DUTY
 - 2 SILVER CONTACTS
 - 3 25 AMPS @ 12 VDC LAMP LOAD
 - 4 ALL STEEL PARTS PLATED

METRIC

DO NOT SCALE

| LET | WAS | DATE | BY | LET | WAS | DATE | BY | MATERIAL | DRAWN | CHECKED | APPR'D | SCALE | DATE DRAWN |
|-----|-----|------|----|-----|--------|--------|-----------|-----------------------|---|--------------------|--------|-------|----------------------|
| | | | | | | | | <i>rk</i> | 20 | <i>(Signature)</i> | | 1:1 | 3-2-87 |
| | | | | | | | | FINISH | COLE HERSEE CO. 30 OLD COLONY VENUE SOUTH DORSET, MA, U.S.A. 01927 | | | | DATE BLUEPRINT |
| | | | | | | | | TOLERANCES | | | | | SWITCH, TOGGLE 3 POS |
| | | | | | ISSUED | 3-9-87 | <i>RF</i> | DECIMAL ± METRIC ± | | | | | |

CH-188(4-78)