

55054-04

MM IN.
 .93 .470
 .95 .750
 .92 1.32
 .8-10 1.50
 .48 1.83
 .25 .010
 6.95 .250

COLE-HERSEE CO. NPM 4-26-77

BUSHING-BRASS NICKEL PLT.
 15/32- 32 UNS-2A

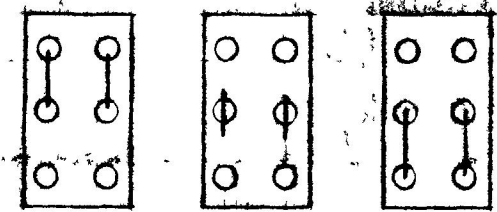
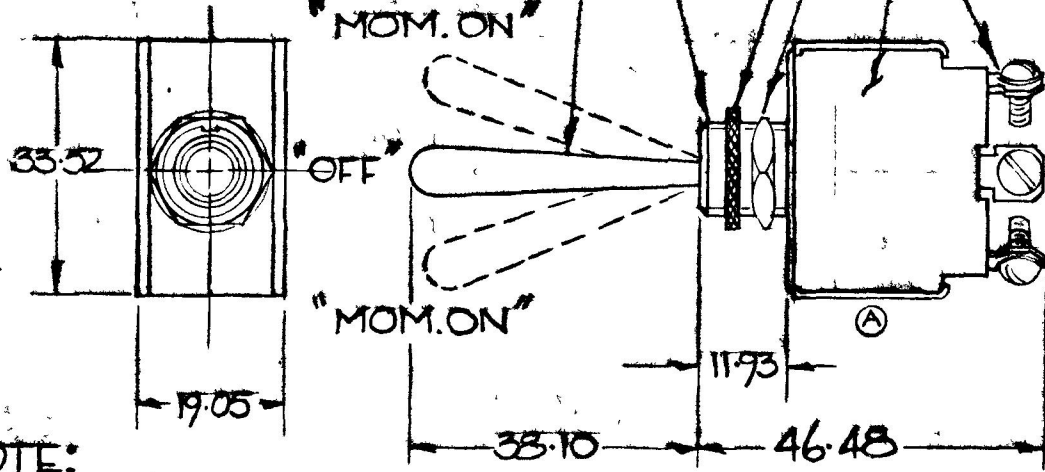
TOGGLE-BRASS
 NICKEL PLATE

FACE NUT-BRASS-NICKEL PLT.

HEX NUT-STEEL

INSULATOR - MOLDED B'LITE

TERMINAL-BRASS &
 SCREW-BRASS, 6-32UNC-2A
 X 6.35 LG.



MOM. ON OFF MOM. ON
 CIRCUIT DIAGRAM

NOTE:
 ALL STEEL PARTS EITHER
 ZINC PLT W/ DICHROMATE DIP OR
 CAD. PLT.

25 AMP @ 12 VDC

DO NOT SCALE

LET	WAS	DATE	BY	LET	WAS	DATE	BY	MATERIAL	DRAWN	CHECKED	APPR'D	SCALE	BASIC WITH LONG	DATE DRAWN
								#	K	RY		FULL	TOGGLE & 1/4" SCREWS	2-23-77
								FINISH	COLE-HERSEE COMPANY BOSTON, MASS. 02127, U.S.A.					DATE BLUEPRINT
								#						
				A	REVISE VIEW / 23007	3/14/86	VK	TOLERANCES	MOMENTARY D.P.D.T. TOGGLE SWITCH.					55054-04
					ISSUED	5/3/11		FRACTIONAL ±						
								DECIMAL ±.25						