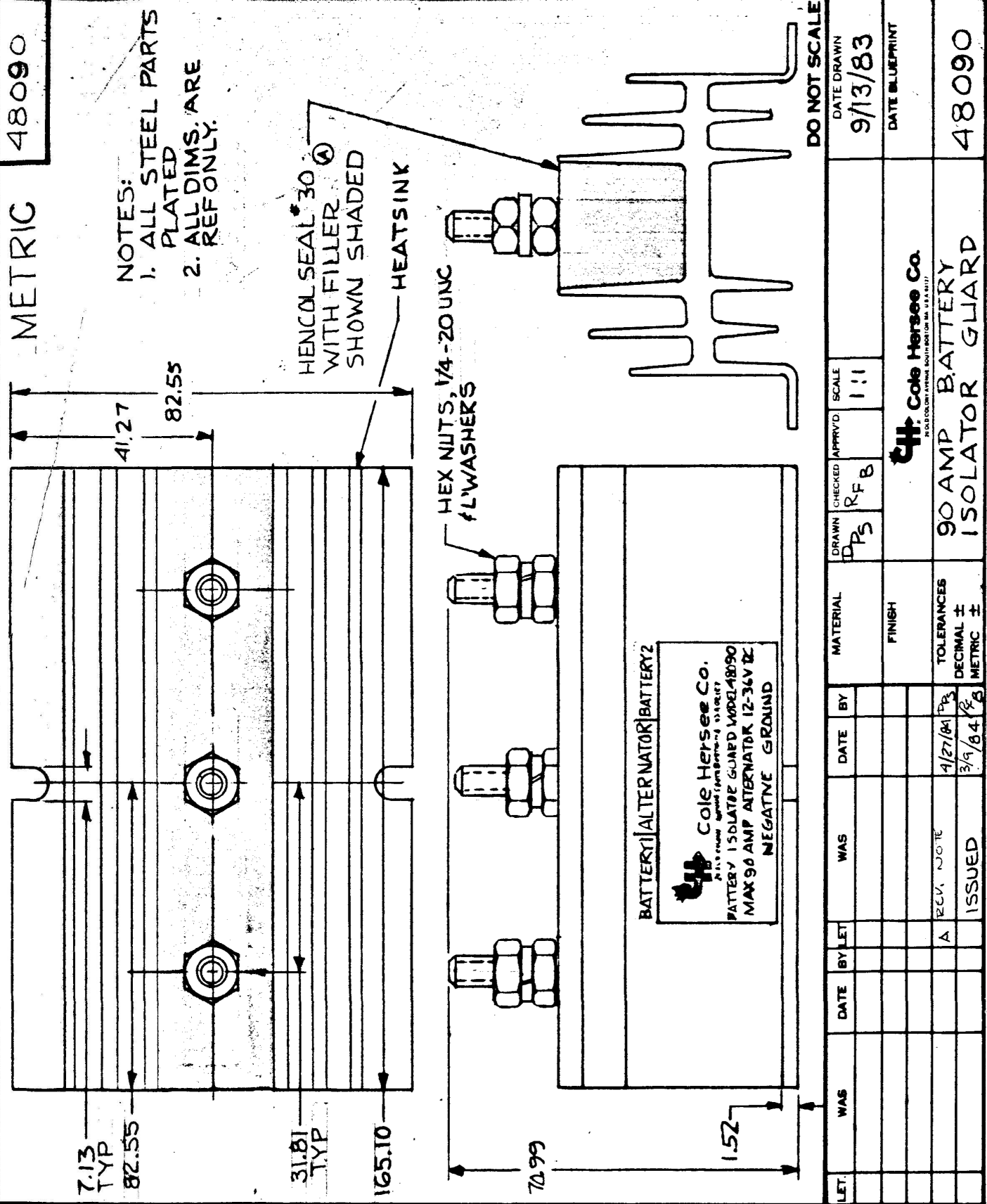


MM	IN
1.52	.060
7.13	.281
31.81	1.252
41.27	1.625
82.55	3.250
70.99	2.775
82.55	3.250
165.10	6.500

EX20328



LET.	WAS	DATE	BY/LET	WAS	DATE	MATERIAL	DRAWN	CHECKED	APPROVD.	SCALE	DATE DRAWN
						FINISH	DPs	RFB		1:1	9/13/83
<b>CH Cole Hersee Co.</b> CORPORATION, COLUMBUS, OHIO, U.S.A.											
							90 AMP BATTERY ISOLATOR GUARD		48090		
							TOLERANCES DECIMAL ± METRIC ±				
							REV. NOTE				
							A 4/27/81				
							ISSUED				
							3/9/84				
							DATE BLUEPRINT				

CH-18814-78)