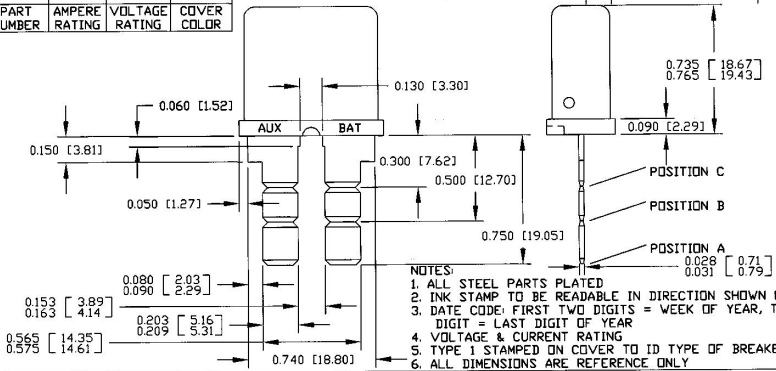
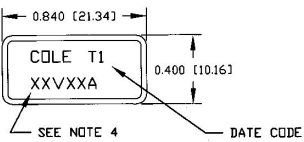


Revision Control Record

Rev.	Description of Change	ECN No.	Date
C	MARKINGS	00843	11/27/00

30409-30	30	12	GREEN
30409-25	25	12	SILVER
30409-20	20	12	YELLOW
30409-15	15	12	BT BLUE
30409-12	12	12	SILVER
30409-10	10	12	RED
30409-8	8	12	BROWN
30409-6	6	12	SILVER
30409-5	5	12	SILVER

PART NUMBER	AMPERE RATING	VOLTAGE RATING	COVER COLOR
-------------	---------------	----------------	-------------



NOTES:

1. ALL STEEL PARTS PLATED
2. INK STAMP TO BE READABLE IN DIRECTION SHOWN ONLY
3. DATE CODE: FIRST TWO DIGITS = WEEK OF YEAR, THIRD DIGIT = LAST DIGIT OF YEAR
4. VOLTAGE & CURRENT RATING
5. TYPE 1 STAMPED ON COVER TO ID TYPE OF BREAKER
6. ALL DIMENSIONS ARE REFERENCE ONLY

Tolerances: Unless otherwise specifically noted, the following are Default Tolerances:
 * 2-place Decimal Dimensions $\pm .02$ "
 * 3-place Decimal Dimensions $\pm .005$ "
 * Angular Dimensions ± 1.0 Deg
 * Metric: Refer to equivalent English Dimension Tolerance
 >>> NOTE: All tolerances are Non-Cumulative. <<<

Dimensional Units: All dimensions are expressed in inches except those shown in brackets (mm) are expressed in millimeters

"30409" or an Abbreviation = Non-Toleranced Reference Dimension, shown for identification purposes only.

PROPRIETARY INFORMATION: This Engineering Drawing and the information contained herein, is proprietary to Cole Hersee Company and may not be disclosed, reproduced, or in any other way transmitted or communicated to any other party without the express written consent of an authorized representative of Cole Hersee Company.

DESIGN CONTROL: It is the responsibility of the individual using/referencing this drawing to assure that the noted design revision level agrees with the revision level of the Controlled Document (Master Drawing). This is a NON-CONTROLLED DOCUMENT unless otherwise specifically noted.

DO NOT SCALE - Dimensional variation may occur during printing/ reproduction.

Key for Special Characteristics:

- Critical Characteristic, relating to Safety and/or Regulatory Compliance
- Significant Characteristic relating to Process Control (IPC)
- Control Dimension relating to Form - Fit - Function as defined by Cole Hersee Company and/or the Customer

(Note that the identification of any Characteristics as being "Special" does not alter the requirement that ALL specified dimensions & tolerances must be met.)

Cole Hersee Co.
 20 Old Colony Ave., South Boston, MA, 02127
 Phn: 617-268-2100 Web: www.colehersee.com

Description: CIRCUIT BREAKER (TYPE 1)

Drawing / Part No.: 30409

Current Rev.: C

Used On or Ref.: Scale: **2:1**

Drawn By: **VAK**

Date Drawn: **7/29/85**

Responsible Engineer: **N/A**

Pg. 1 of 1