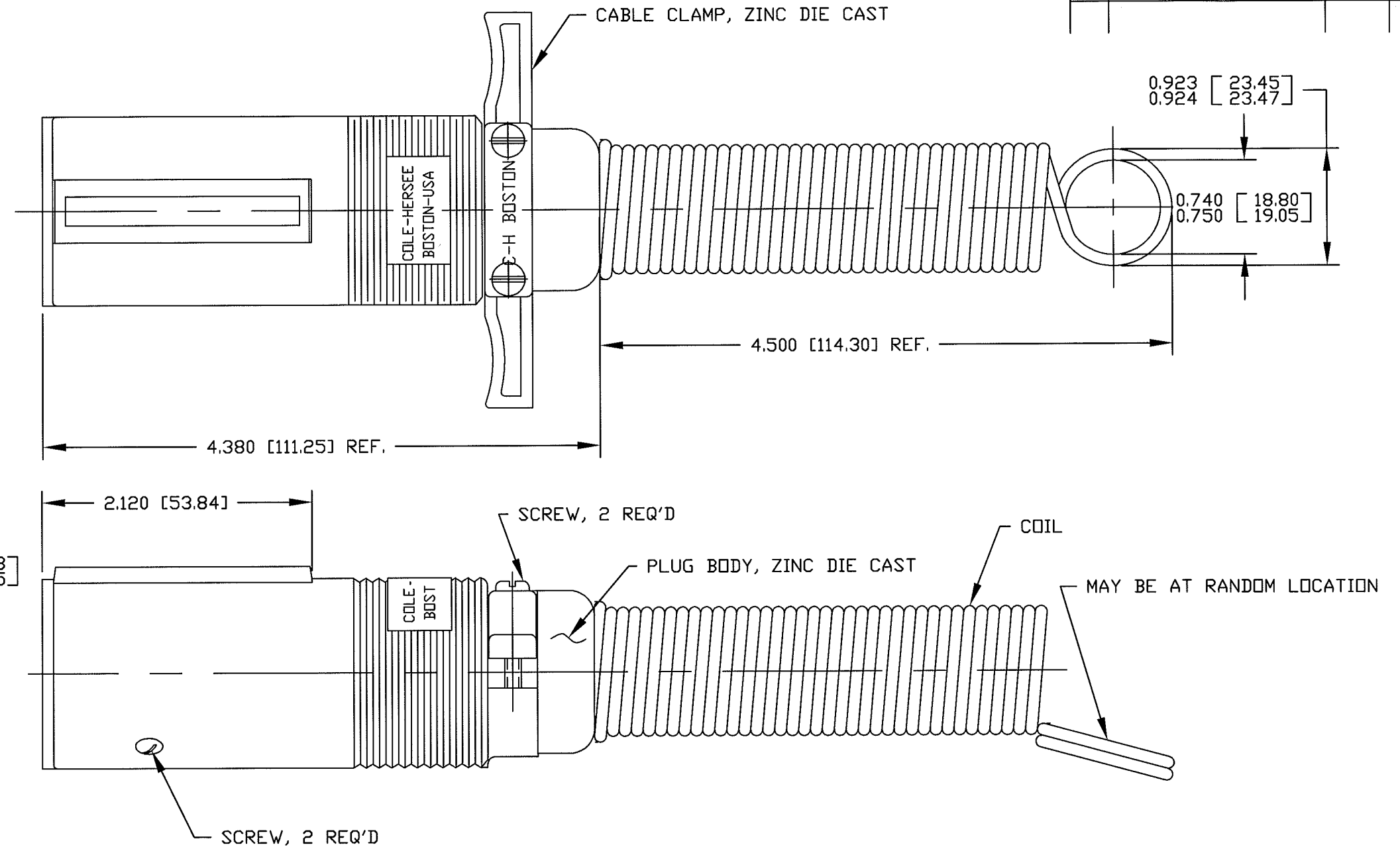


**Revision Control Record**

Rev.	Description of Change	ECN No.	Date
AA	NOTE CHANGE	06369	11/13/06
AB	ADD TORQUE SPEC.	13069	01/28/13



- NOTES:**
1. CONFORMS TO S.A.E. J560A
  2. WILL ACCEPT UP TO 8 GA [8.0mm<sup>2</sup>] WIRE AT GROUND TERMINAL (WHITE) AND UP TO 10GA [5.0mm<sup>2</sup>] WIRE ALL OTHER TERMINALS
  3. 7 SET SCREWS, #8-32, SUPPLIED IN A PLASTIC BAG
  4. MAX TORQUE ON SET SCREWS #8-32 OF 8 INCH/LBS

**Tolerances** Unless otherwise specifically noted, the following are default tolerances;  
 \* 2-place Decimal Dimensions +/- .02"  
 \* 3-place Decimal Dimensions +/- .005"  
 \* Angular Dimensions +/- 1.0 Deg.  
 \* Metric: Refer to equivalent English Dimension Tolerance  
 >>> NOTE: All tolerances are Non-Cumulative. <<<

**Dimensional Units** All dimensions are expressed in inches except those shown in brackets (xxx) are expressed in millimeters

"REF." or an Asterisk (\*) = Non-Toleranced Reference Dimension, shown for clarification purposes only.

Used On or Ref.: Scale: **1:1**

**PROPRIETARY INFORMATION** This Engineering Drawing, and the information contained herein, is proprietary to Cole Hersee Company and may not be disclosed, re-produced, or in any other way transferred or communicated to any other party without the express written consent of an authorized representative of Cole Hersee Company.

**DESIGN CONTROL** It is the responsibility of the individual using / referencing this drawing to assure that the noted design revision level agrees with the revision level of the Controlled Document (Master Drawing). This is a NON-CONTROLLED DOCUMENT unless otherwise specifically noted.

DO NOT SCALE - Dimensional variation may occur during printing / reproduction.

Drawn By: **MW** Date Drawn: **10/27/50**

**Special Characteristics:**

- Critical Characteristic, relating to Safety and/or Regulatory Compliance
- Significant Characteristic relating to Process Control (SPC)
- Control Dimension relating to Form - Fit - Function as defined by Cole Hersee Company and/or the Customer

(Note that the identification of any Characteristics as being "Special" does not alter the requirement that ALL specified dimensions & tolerances must be met.)

Responsible Engineer: **NA** Pg. 1 of 1

**Cole Hersee Co.**  
 20 Old Colony Ave., South Boston, MA, 02127  
 Phn: 617-268-2100 Web: www.colehersee.com

**Description:**

**PLUG BODY ASSY**

Drawing / Part No.: **1255**

**AB**