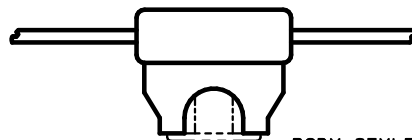
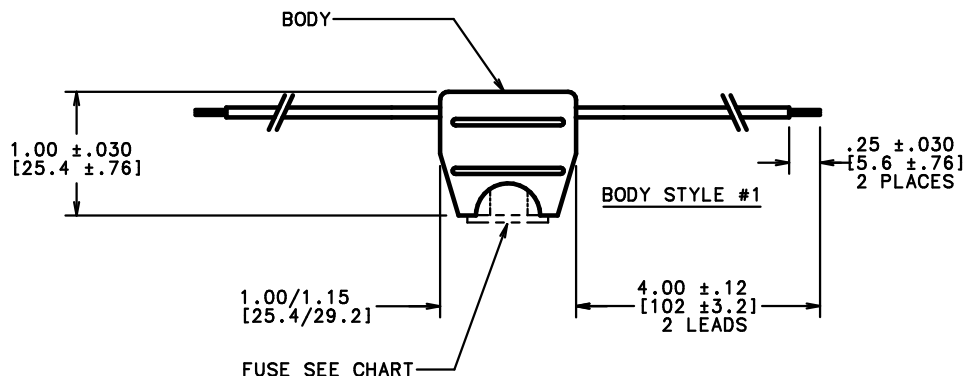


PART No.	BODY	BODY STYLE	FUSE PROVIDED	FUSE RATING	REMARKS
OFHA0001Z	OFHA0001Z	1	NONE	-----	NOTE 1
OFHA0002Z	OFHA0002Z	2	NONE	-----	NOTE 2
OFHA0003Z	OFHA0001Z	1	0257003.P	3 AMP	NOTE 1
OFHA0004Z	OFHA0001Z	1	0257004.P	4 AMP	NOTE 1
OFHA0005Z	OFHA0001Z	1	0257005.P	5 AMP	NOTE 1
OFHA0075Z	OFHA0001Z	1	025707.5P	7.5 AMP	NOTE 1
OFHA0010Z	OFHA0001Z	1	0257010.P	10 AMP	NOTE 1
OFHA0015Z	OFHA0001Z	1	0257015.P	15 AMP	NOTE 1
OFHA0020Z	OFHA0001Z	1	0257020.P	20 AMP	NOTE 1
OFHA0025Z	OFHA0002Z	2	0257025.P	25 AMP	NOTE 2
OFHA0030Z	OFHA0002Z	2	0257030.P	30 AMP	NOTE 2



BODY STYLE #2



FUSE SEE CHART

NOTES:

- FOR OFHA0001Z:
 - MAX. RATING: 20 AMPS, 32 VOLTS AT A MAX. OPERATING TEMPERATURE OF 180° F (82° C).
 - BODY MATERIAL: HIGH TEMPERATURE P.V.C., BLACK.
 - BLACK WIRE LEADS, #16 GAUGE, COPPER STRANDED (19 STRAND/29 GAUGE) PVC INSULATION, 0.016" THICK [0.406mm] AUTOMOTIVE LOW TENSION TYPE GPT/TW PER S.A.E. STRANDED J1128.
- FOR OFHA0002Z:
 - MAX. RATING: 30 AMPS, 32 VOLTS AT A MAX. OPERATING TEMPERATURE OF 180° F (82° C).
 - BODY MATERIAL: HIGH TEMPERATURE POLYURETHANE, BLACK.
 - ORANGE WIRE LEADS, #12 GAUGE, NOM. O.D. 0.136" [3.5mm], COPPER STRANDED (19 STRAND/25 GAUGE) PVC INSULATION, 0.026" THICK [0.660mm], RATED 300V, TEMP. RANGE: -10°C TO +80°C.

GENERAL NOTES:

- WIRE LEADS ARE MOLDED INTO FUSEHOLDER BODY.
- DIMENSIONS IN INCHES, [mm].

NO	COMPONENT NO	DESCRIPTION	QTY/M	U/M
BILL OF MATERIAL				
MATL SPEC		FINISH		
COPIES TO	DRW	JMB	SCALE	1=1
1	9		DATE	2/10/99
2	10		DATE	
3	12		DATE	
4	13		DATE	
5	14		DATE	
6	15		DATE	
7	16		DATE	
8	17		DATE	
TOLERANCE UNLESS OTHERWISE SPECIFIED				
TWO PLACE DEC ±.01				
THREE PLACE DEC ±.005				
ANGULAR ±1°				
TITLE				
AUTOFUSE HOLDER, INLINE (FUSE OPTIONAL)				
LTR		REVISION	CHK	APD
F	39728C-	REVISED & REDRAWN ON NEW FORMAT 2/26/99 JMB		

DES PLAINES, ILLINOIS 60016

DRAWING NO. SERIES OUTLINE
 OFHA0000Z

UNLESS OTHERWISE SPECIFIED, DIMENSIONS DO NOT INCLUDE PLATING.
 DENOTES CRITICAL CHARACTERISTICS.
 DENOTES CPK DIMENSIONS--MINIMUM CPK VALUE
 DENOTES A CHARACTERISTIC THAT PROVIDES AN INDICATION
 OF PROCESS PERFORMANCE. REFERENCE PROCEDURE FOR MEASUREMENT
 (S) DENOTES THAT THE DIMENSIONAL LIMITATIONS
 ARE TO BE WITHIN THE DIMENSIONAL LIMITATIONS
 AND NOT BE LIMITED BY THE DIMENSIONAL LIMITATIONS
 FOR MAXIMUM TOOL LIFE.

UNCONTROLLED DOCUMENT